



Photograph courtesy off Bill Stringer

The **Burtonian**

Burton in Lonsdale
Village Newsletter

Number 104

June/ July 2021

PRICE: 25p / FREE to residents

At last life in the village is slowly taking on a semblance of normality and with warmer weather on the menu the lovely community areas we have around us can be enjoyed once again.

Thank you to those who sent in photos of springtime in Burton, although the cold weather we have had has taken its toll.

Please do take time to read the piece on pages 24/25 concerning plans for the village hall, it really is important that the views of Burton's residents are passed onto the Village Hall Committee.

David & Marilyn

burton.news@gmail.com



SEE PAGES 10/11

A number of events and meetings are now being planned.

Keep an eye on the Village calendar at

www.burton-in-lonsdale.net/coming-events-in-burton

And do look up the various Websites and Facebook pages for lots of Village Organisations. They are all listed on the LINKS page of the Village Hall Website.

www.burton-in-lonsdale-village-hall.co.uk/links

All Saints' Church News

Sunday Services in June and July 2021

All the planned activities at All Saints Church are subject to revision if the Covid regulations change

May	30 th	11 am Eucharist to celebrate 60 years since the ordination to the priesthood of Rev Canon David Bruno
June	6th	11 am Climate Sunday Special Service
June	13th	11 am (Holy Communion)
June	20th	11 am (Morning Prayer)
June	24 th	<i>Thursday 8 am Holy Communion?</i>
June	27th	11 am (Holy Communion)
July	4th	11 am (Morning Prayer)
July	11th	11 am (Holy Communion)
July	18th	8 am (Holy Communion) 11 am (Morning Worship)
July	25th	11 am (Holy Communion)

Other Services and Events in June and July

Stay and Play, our group for pre-school children (with parent or guardian) meets on Thursdays on the Village Recreation Field, weather permitting. New families are always very welcome. At present we cannot offer the facilities of the church room, but will continue to meet on the Rec.

Further details – email the church wardens on Allsaintscw@gmail.com or tate_pauline@hotmail.com.

Bump it forward. The congregation of All Saints church together with the Methodist congregation sent a cheque for £315 to the Liverpool Hospital for Tropical Diseases who are supporting partner hospitals in Africa in their work to fight the Covid 19 Crisis.

Best wishes,
Catherine and Christine, Church Wardens at All Saints

And from Vicar Denis ...

The story of the Good Samaritan teaches us that everyone is our neighbour and teaches us that we should care for people even if we do not know them. It also teaches that we should help and not pass passively by on the other side of the road, whilst expecting somebody else

to do the right thing. Jesus commanded us to love one another and sometimes it means giving of ourselves, whether it is in money, time or energy. Caring for the unfortunate by donating to a foodbank or caring for the environment by litter picking are all things we can do but what about the bigger issues?

In our day climate change has become a pressing social priority. The demand for energy and goods from far away has contributed to the depletion of the ozone layer, the melting of the ice caps and extremes of weather. Of course the question has to be asked, in this global issue, what can little old me do in little old Burton in Lonsdale. The bible tells us that Noah (of Ark fame), along with his descendants, was tasked with caring for the earth and its environment. This is a task that we should all embrace. If not, what kind of a world are we leaving for our children and grandchildren? As individuals we can use less energy and cut our carbon usage. The prophet Zechariah in the Old Testament called on his people not to despise the day of small things for God is in these small things and they can make a difference. All Saints has a silver Eco award. This entails reviewing relevant teaching, land, building, lifestyle and community engagement. We seek to do more.

We are also a Fairtrade church, seeking to use the resources of the world, given by God, in a responsible way. A representative of All Saints Church has joined a group of Craven Churches who are working together to achieve carbon neutral status within the next 8 years. Together the group has been awarded the finance to commission a Feasibility Study which will assist the All Saints PCC in deciding how to replace current, outdated heating systems with new, technology carbon neutral, systems (probably no wind farm on the village green though!).

Now it is reported that, during lockdown, the hole in the ozone layer has closed a little and birds seem more numerous and louder! Indeed Covid 19 has forced us to stop and slow down and see some things afresh that we took for granted. This includes seeing the natural world more clearly and considering what we have done for it and what we could do for it. The things we choose to do or buy or eat can have an effect on the environment and that affects everyone.

All Saints Church 150th Celebrations.

Unfortunately we have had to cancel our plans to host a village Art Exhibition in June/ July.

We look forward to our Heritage Open Days in September when the Heritage group will put on another exhibition.

Look out for details in the August Burtonian.

*What sits at the bottom of the sea and twitches?
A nervous wreck.*

Your Village Hall

Many of you use the Village Hall, whether you go to film nights, concerts, the panto, or use it for sporting activities, table tennis, circuit training, pilates, archery.

You might hire it for birthday parties.

Well, the hall doesn't run itself, we do need more people to help run it. Most of the current committee have been on there for many years and would appreciate new ideas and enthusiasm to move the hall forward as we come out of lockdown.

It is not onerous, we don't have lots of meetings, one or two in a normal year, just when something needs to be decided.

Please do get in touch to find out a bit more about joining us and volunteering to help with ideas and yes, of course, to help at events.

David Taylor, 64944 or howfen.lad@gmail.com

UNIVERSAL CREDIT

Due to the impact of Coronavirus over 5.5 million people are claiming Universal Credit. Many of them are new to claiming Universal Credit having been negatively impacted by Coronavirus.

Here is a guide to help people navigate claiming Universal Credit.

<https://www.jobcentrenearne.com/universal-credit/>

The link will also be on the Village Website – [www Burton-in-Lonsdale.net](http://www.Burton-in-Lonsdale.net)

Sue Gregory



BULL FARM APPLE JUICING DAY

OCTOBER 16TH 2021 (covid-19 permitting)

Come and get your apples juiced!

Juicing demonstrations throughout the day.

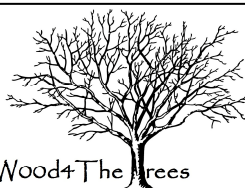
Further details to follow in the next issue of the Burtonian.

Free event.



**Please do patronise our
advertisers, they keep the
magazine going.**

**And if you know of anybody
who might like to advertise in
the Burtonian, please get in
touch.**



Wood4The Trees

Sam Watson
Bentham

015242 37728

07789 901329

Tree Care and Forestry. Felling,
Thinning, Reductions, Stump Grinding,
Pruning, Hedging and Hedge Laying.

Country Harvest

food clothing gifts coffeeshop



NEW Outdoor Living Cabin

Firepits, garden furniture, lighting & so much more

www.country-harvest.co.uk LAG 3PE 015242-4223

Spoken Spanish Lessons

Do you want to learn Spanish?
Online classes delivered by a native
speaker over Zoom.

Patricia Bustamante has taught my
granddaughter with amazing results.

For more information contact
David Collins on 07772 827241

THE FAIRBANK SOCIETY



The Fairbank Society is a registered charity located near St Mary's church in Kirkby Lonsdale. Our main purpose is to provide a high standard of accommodation and support for independent older people. Our residents have chosen us so they can maintain their independence, but be relieved of the day to day chores involved in living alone, such as cooking, cleaning, washing and gardening. Residents pay a monthly rent which covers all aspects of living such as food, laundry, cleaning, property maintenance, broadband and help from staff. The only extra charges are for a telephone, and any personal care that may become necessary, which can be sourced through local agencies.



If you would like more information,
please telephone 015242 71077,
e-mail Janet at manager@fairbanksociety.com
or visit our website
www.fairbanksociety.com



Spider's Web Gates

The Spider's Web Gates were one of the iconic objects of my childhood. They stand at the entrance of the driveway to Clifford Hall, close to Burton-in-Lonsdale. Their design is unusual, unique and really out-of-character with the area. The Spider's Web Gates were always more than just gates: it is as though their design was too strong to be just contained within wrought iron, and so leaked out into the mythology and landscape of the area. The locality around them became known as Spider's Web. A walk through Greta Woods looping back to Burton via Clifford Hall is referred to as the Spider's Web Walk. The stretch of road from Burton Bridge to Ravensclose is known locally as Spider's Web Road. As a child I was told that touching the gates would give you bad luck. Being friendly with the Towler family (during the 1970s and 1980s) who lived at Clifford Hall, I had no option but to touch the gates to open and close them on a regular basis every time I cycled down to visit. I have probably accumulated a lot of bad luck as result of this.

I hadn't really thought about the gates for a long time and then a lady contacted me about the Burton-in-Lonsdale pottery industry. In her email, she casually mentioned that her grandfather had made the Spider's Web Gates in a blacksmiths in Burton-in-Lonsdale. William (Henry Garnett) Slater was born in 1876. His father ran the smithy on Duke Street, Burton-in-Lonsdale. William worked and trained to be a blacksmith with his father and the Spider's Web Gates were made by William during his apprenticeship. He was apparently very proud of the gates and quite rightly so to. This would date the gates to sometime in the 1890s. William also made the weather vane on top of the church spire and when the vane was taken down - not too long ago - for a clean, the name SLATER was found stamped on it. A friend of mine pointed out that the gates are a listed building and sent me Craven District Council's reference to this:

Gates to the south of Clifford Hall Cottages, Burton-in-Lonsdale SD 6470 7126 II 24 June 1988 Gates c. 1820. Cast iron and ashlar.

A pair of ashlar banded and rusticated gate piers surmounted by ball finials. A pair of cast iron gates with iron sun turrets from the top and bottom corners, with radiating iron spokes. These gates are very similar in design to those designed by Thomas Telford on the Holyhead Road, and might be after his design

This is very interesting for a number of reasons:

If you Google Image search "Thomas Telford Gates", you get lots of images of gates that bare an uncanny resemblance to the Spider's Web Gates. I don't think there can be any doubt that the gates were inspired by Thomas Telford's design.

The gates were not actually based on a spider's web at all, but rather on a double sunburst pattern.

The gates are dated to 1820. I suspect that Craven District Council estimated this based upon the building of Clifford Hall. However if this date is correct then William Slater cannot have made them, as this would be almost 60 years before he was born.

Thomas Telford's sunburst gates were designed for the toll houses on the London to Holyhead road that was built between 1815 and 1826. If the Spider's Web Gates were made in 1820, then they predate the completion of the road. Could the Spider's Web Gates have a direct connection with Thomas Telford? Where they manufactured alongside the Holyhead gates?

The gate posts are cast iron. I doubt that a local blacksmith would have the facilities to cast something so large. The same friend that pointed out the listed building reference for the gates suggested that the posts resemble cannons – and the filial cannon balls and might be a reference to the Battle of Waterloo (1815). This seems a possibility (especially if they were built in 1820).

Personally I find it hard to believe that the Spider's Web Gates are over 200 years old. I think the posts though may well be. My feelings are that the original gates (perhaps they were wooden) were looking a bit tired by the late 19th century and so the owner of Clifford Hall arranged for the local blacksmith to make him some new ones. Too many descendants of William Slater seem to confirm that he made the gates, for it to be a myth. I guess you could prove this theory by finding the SLATER stamp on the gates, although I suspect the gates may need to be sandblasted first. I will however definitely search for it next time I am passing. As to how the design was chosen, well that is anybody's guess. Perhaps the owner of Clifford hall spent a lot of time travelling from Holyhead to London or maybe William Slater had a strong interest in prominent Scottish engineers?

Today, the Spider's Web Gates are permanently locked open, which in my opinion is a great shame, as they make a far bolder statement closed when the strands/beams of the four radiating webs/suns meet up in the middle and create a far more unified and homogenous whole.

Lee Cartledge



VOLUNTEER WANTED

.. for a one-day-a-year job organising our 22nd Coffee and Cake Morning on September 24th, in aid of Macmillan Cancer Support. It is great fun and a great cause.

Ring me on 61486. Jill Peel

WORLD'S BIGGEST
COFFEE
MORNING

MACMILLAN
CANCER SUPPORT

LVCS Swimming Pool

Despite the difficulties everyone has faced in the last 18 months The Lune Valley Swimming Pool in Hornby is doing quite well.

Even with current restrictions we have averaged around 400 swimmers per week and are always looking at ways to improve on this in the short term

In addition, during down-time we have carried out a maintenance programme of replacing worn out equipment and pool plant.

We are hoping to provide a further range of swimming opportunities for residents and visitors to our area during the summer months and

planning to make some cosmetic improvements (volunteers welcome!) and return to full capacity as soon as Covid19 conditions allow.

We are most grateful for the continuing support and understanding of the local communities and schools during these challenging times.

Please check our website for timetable changes and booking procedures.

Website- www.lunevalleypool.com; Facebook – lune valley swimming pool.

Email poolmanager@lunevalleypool.com Direct line pool telephone. (01524) 805666.

B4RN 4 Burton in Lonsdale - Spring Update

The B4RN4BiL Zone Champions have been working hard helping the community plan the routes through gardens to reach every property. Some zones have more mature plans than others. There is a high level plan for the whole village, but the detail comes from the neighbourhoods getting together and working with the Zone Champions to plan the exact routes. If you want B4RN, but the route through your zone is not fully established, talk to your neighbours and work with your Zone Champion to determine the best route.

Now that the planning for the Community Project is well established our attention turns to funding. There are two sources of funding; Government Vouchers and Community Investment. B4RN have submitted a Pre-Registered Package for Burton in Lonsdale to the Department of Culture Media and Sport (DCMS) for funding, and we are awaiting approval. Once DCMS funding is in place we will know the size of the deficit that must be met by Community Investment.

Community Investment is through purchasing shares in B4RN at £1/share. Shares can only be sold back to B4RN at £1/share, but attract an annual interest rate (currently 5%). Shares must be held for a minimum of 3 years. If you are in a position to invest £1500 or more in B4RN then you will qualify for a free connection worth £150. Full details about investing in B4RN can be found on the b4rn.org.uk website. As with any investment you should seek Independent Financial Advice. Please mark all investments against the Burton in Lonsdale project.

Until we have DCMS approval, and the project is fully funded, we cannot progress the build. However, if you are digging up your garden for another reason and it makes sense to install B4RN at the same time then please get in touch with your Zone Champion, or myself, and we will help you install ducting.

B4RN is coming to Burton in Lonsdale, the more prepared we are the quicker we can connect every property that wants B4RN once the project is fully funded. If you want to find out about B4RN please don't hesitate to contact your Zone Champion, or myself.

Simon Stockton

B4RN4BiL Project Champion, Ingleview, 20 Low Street, 07720705882

stockton.simon@googlemail.com

H & M

CRAFTSMEN

KITCHENS | BEDROOMS | STUDIES



Full design and fitting service

Showroom Open:

Mon-Fri 9am-5pm | Sat 10am-1pm

Ingleton | North Yorks | LA6 3NU

015242 41535

kitchensandbedrooms.co.uk



OGLETHORPE
STURTON &
GILLIBRAND

Friendly, professional legal advice

Individuals | business | agriculture

Call us today: 01524 846 846

LANCASTER | KIRKBY LONSDALE

www.osg.co.uk



Healthy Pet Club

PUPPY & KITTEN PLANS



01729 823538

www.daleheadvetgroup.co.uk



Ofsted rated us Outstanding in all areas

Open 7.30am – 6.30pm

- 30 hours free childcare for eligible 3 & 4 year olds.
- 15 hours free childcare for eligible 2 year olds.
- Modern facilities and a friendly traditional atmosphere.
- Flexible opening hours to cater for most needs
- Dedicated Baby facilities.
- Holiday club available during all school holidays.

1 Station Road

HORNBY

T: 015242 22288

E: info@hornbydaynursery.co.uk

Call or email the nursery to discuss your individual needs or to arrange a visit.

NOTES FROM AN UNINTENDED NATURALIST JUNE 2021

There is an old French song for children that sings delightfully as a round. It certainly made my French lessons at school suddenly come to life and I've remembered it ever since.

"Dans la foret lointaine, on entend le coucou.

Au haut de son grand chene, lui repond le hibou.

Coucou, hibou, coucou, hibou, coucou hibou, coucou. (The refrain is sung twice.)

(In the distant forest, a cuckoo is heard.

From the top of his oak tree, the owl answers.)

The cuckoo call is familiar to all but a rarer sound these days.

The migration from over-wintering in Central Africa is fraught with obstacles for this handsome bird with barred chest and extraordinary breeding cycle behaviours. But the amazing journey is still successful for some, returning year after year.

Out on Bentham Moor if you are lucky, you can hear it from May, coming from the edge of the woodland. Recently heard, it reminded me of living on the edge of farmland in Herefordshire many years ago. On the fence at the end of our garden a huge demanding fledgling was making a huge noise for the tiny maternal host, a small warbler of some sort to feed it. Though I had no binoculars in those days, neither a camera, and very little knowledge, I knew what I was seeing. The cuckoo had hatched, from what had been its cunningly –laid egg into a warblers nest, had gradually ousted its small warbler fledglings, and the devoted unbidden foster mother was flying back and forth constantly to feed this monstrous cuckoo hatchling.

So hearing that distinctive descending minor third call on Bentham Moor brought the memory back and the start of my curiosity about this bird all those years ago.

The Cuckoo Festival in Austwick may have to be suspended again for another year, but it is a delightful village community event I look forward to hopefully happening again next year.

And although cuckoos and owls perhaps only respond to each other in the French nursery song, I have always been interested in both.

Owls have been associated with perhaps finer human qualities than cuckoos throughout history and celebrated culturally. Athena, ancient Greek Goddess of wisdom was always depicted with an owl, showing her ability, like the nocturnal bird to see things that others could not. From beautiful tiny marginal illustrations in medieval manuscripts to the delightful sketches of Edward Lear, there are owls. Edward Lear who was much more than a composer of illustrated limericks in the 19th century, was a keen naturalist and painter. His finely observed paintings of birds are treasures but it is his humour which delights in a different way.

"There was an Old Man of Dumbree,

Who taught little owls to drink tea.

For he said "To eat mice is not proper or nice

That amiable Old Man of Dumbree. " "

The Owl and the Pussy Cat is another much-loved favourite where his Owl is a troubadour looking up to the stars above, singing a love song to the pussy-cat in the pea-green boat in his verses and will forever be in a child's imaginative world where animals can live harmoniously together. Lear was born in 1812, same year as Charles Dickens.

"Wol" continued in the tradition of being a source of wisdom, living in the imaginary world of A.A. Milne's books, for the characters, Pooh and Piglet. The truncated sign "Trespassers W..." will forever be the longest word read by 6 year-olds of my generation, I imagine.

Just before the outbreak of foot and mouth in the early 2000s ,I was in Cornwall and visited an Owl Sanctuary in the wonderfully-named village of Indian Queens. Called the Screech Sanctuary (after the original owners, Mr and Mrs Screech!)

It was a chance to observe different owls and sketch from life. I learnt so much from the dedicated staff there about owls, particularly barn owls who being nocturnal, have to work harder in spring and summer when daylight lengthens to hunt for food. The acute vision in their eyes (with a third nictating eyelid) with their ability to detect the slightest movement in the grass verges where tiny shrews and other small mammals are foraging ,means their focus is strong. Traffic racing along roads only inches away can prove fatal as the owls hover above and frequent casualties are brought into the Owl sanctuary . Sometimes there is nothing that can be done in the adjoining Owl hospital but they go to great lengths to do what they can for these magnificent birds and they aim to release healthy birds back into the wild wherever possible. I was there for three days and was invited to see the little owl hospital. I learnt that besides *Tyto alba alba*, the Barn Owl, there are many others in the Strigidae family. Tawny owls , *Strix Aluco*, which can be heard calling to each other in woodland near the river Greta . But also little owls and short-eared and long eared-owls, whose numbers declined drastically when there was widespread use of DDT in the past. But with increased awareness and change of practice, careful conservation and educational programmes, monitoring and recording , the different species are hanging on. There were several exotic owls in this Cornish sanctuary that had been purchased as “pets” and “trophy” birds needing much care and attention after human neglect. And frequently barn owls were brought in after traffic trauma .

However on one occasion, two casualties that were brought in, barn owls who had each lost a wing, had been put in the aviary together as they seemed relaxed with each other. And were lovingly cared for by the staff and seemed in good form. One day ,it was noticed that a little egg had been laid. The staff were amazed and carried on feeding the owls who had obviously more than just “got on well together.”

The female had kept incubating as she would have in the wild and the male would feed her with the proffered food provided daily. Eventually a little fluffy owlet hatched out to everyone's delight in the sanctuary. In the following days and weeks, the hatchling developed and became ready to try out its wings. The staff moved the family to a large outside aviary where the young barn owl could practise first flights , no doubt encouraged by its disabled parents. And the day came when the doors were opened to the fields and woodland and the young owl flew off and then returned each time. It was hoped that it could really survive into adulthood as a wild bird and as each day and night passed, the returning owlet was spending more time away than in.

The staff told me the youngster was returning less and less frequently to the sanctuary but were proud of the successful rearing and its instinct to live in the wild.

The Screech Sanctuary, although now run by new dedicated owners , relies on public donations and opening up after lockdown again to the public, is still going about its wonderful work. I've included a sketch of one of the Barn Owls from that time.

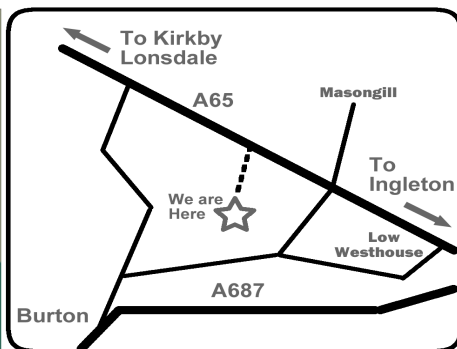
On the floors of the old unmodernised farm buildings so suitable for the aptly-named Barn Owl still about , the neat dark pellets can be seen from the undigested food. One was painstakingly taken apart to show 32 tiny bones of shrews and mice and cleanly displayed in a wooden hide in Ynyslas, West Wales, that I remember seeing long ago as part of an education programme.

The work of the dedicated naturalists to monitor and protect these wonderful birds is quietly done day after day, and who, like owls, do not seek the limelight.

Chalybeate Kennels & Cattery



Pet Food & Supplies
015242 41120



BRAND NEW HEATED KENNELS HEATED CATTERY

- ALL IN A LOVELY COUNTRY SETTING
COMPLETELY REFURBISHED SHOP
SELLING ALL PET FOOD & ANIMAL SUPPLIES
DROP IN, OR TELEPHONE RACHEL OR CHRIS

Full Days Available!

Happy Days at **Busy Bodies Pre School**

All 3 to 4 year olds can access 15 hours per week of free early years entitlement. Some 2 year olds are also eligible if criteria met.

Session Times
Monday, Tuesday & Thursday

Morning Session - 9am-12.30pm - £14.00 (includes lunch period)
Afternoon Session - 12.30pm - 3pm - £10

Full Day - £24.00

(A school lunch can be provided upon request for £1.10)

Busy Bodies Pre School,
c/o Melling St Wilfrid Church
of England Primary School,
Lodge Lane,
Melling,
LA6 2RE.
015242 21538 Ext 2



Bay Vets

"The Community Vets"

Inspiring trust, passion and care
to deliver excellence to pets and
their families.

Lancaster 01524 32696
Morecambe 01524 410867
Milnthorpe 015395 62770
Caton 01524 770615

24 hours emergency service

info@bayvets.co.uk
www.bayvets.co.uk



Cathryn
Pattinson

MORE PICTURES IN AND
AROUND BURTON



Bill Stringer

BURTON'S SPRING



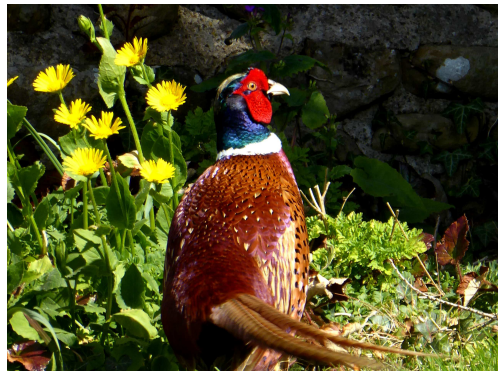
Marilyn
Smith



Teena Taylor



Teena Taylor



Jane Burns

S GARDENS G 2021



Marilyn
Smith



Jane Burns



Marilyn Smith



Teena Taylor

Rachel & Ali @ THE BARBER SHOP

3 Station Road, High Bentham

Monday 9.00 till 5.00
Tuesday 9.00 till 5.00
Wednesday 9.00 till 5.00.
Thursday* 9.00 till 12.00
& 4.30 till 9.00pm
Friday 9.00 till 5.00
Saturday 8.30 till 12.00

*Appointments available Thursday mornings

Alison
07761 725744

Rachel
07851 464433



Langcliffe
Kennels & Cattery

Top quality, professional care for your
cats & dogs in our safe, comfortable
& clean purpose built facilities

- Open 7 days -

tel. 01729 822393

email: info@langcliffekennels.co.uk • web: www.langcliffekennels.co.uk

Howsons Lane, Langcliffe, Settle, North Yorkshire, BD24 9NG

J. LAWSON

ELECTRICAL CONTRACTOR

14 MANOR CLOSE 07786 222566
BURTON IN LONSDALE 015242 62916
LA6 3NE

jlawsonelectrical@gmail.com



Pennine Outdoor Fabrics Ltd

Special offer on
Sunbrella Plum!

New waxed cottons
Browse on-line

www.pennineoutdoor.co.uk
sales@pennineoutdoor.co.uk 015242 63377



Valerie Hinde

Chartered architect and designer

Domestic extensions

Refurbishments

Conservation

Listed buildings

Planning Applications

Building regulations

Community

Commercial

49 Robin Lane, Bentham, LA2 7AG

Tel 07503 731818

015242 61407

valeriehinde@gmail.com



MARK WATSON

HOME & GARDEN MAINTENANCE

Digging, fencing, hedge trimming, mowing,
paving, planting, power washing, rockeries,
rotavating, seeding, spraying, strimming,
turfing.

07759680938

07759680943

Low Bentham
015242 62038

Demolition, dry lining (plaster boarding),
insulating lofts, pointing, rendering,

Telephone: 015242 - 61557

W. H. HAMBLING **PAINTER & DECORATOR**



GRETA BANK
BARNOLDSWICK LANE
BURTON-IN-LONSDALE
CARNFORTH
LANCASHIRE
LA6 3LZ

Leck St Peter's CE Primary School News.

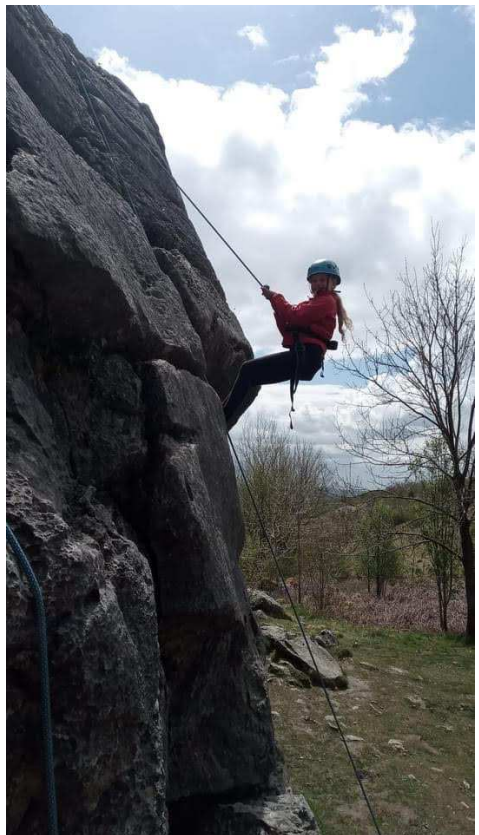
This week, alongside the nation, we have been focusing on Mental Health Week.

On Tuesday 11th May our Upper Juniors went climbing on Hutton Roof Crag for the day, we were very lucky to get the best of the weather and the children all had a thoroughly enjoyable day.

Here is a little snippet of what one of our Y5 children thought of the day:

“Everyone was very excited. The three different ropes were set up and we were ready to climb. We were split into groups and I started on the easiest climb and I got to the top. I tried the next climb but I couldn't get to the top because it was really hard – it was the hardest climb! After lunch my group went to the 2nd hardest climb and I was terrified but I tried it and succeeded! Finally, we had all attempted all three climbs and we had time left over, so the instructors set up one more climb. This was the hardest climb because the limestone went straight up then an overhang. The instructors explained what this was and asked who would like to attempt the climb. Five children attempted and 3 succeeded. The day was very fun and exciting and everyone enjoyed themselves.”

You can find our school on Facebook ‘Leck St Peter's Primary School’, where lots of pictures have been added to the page.





Gardening with Gunther June/July 2021



June and July are two of the most special months in the garden. With the April (and this year May) showers and the summer sun everything will be flourishing and the colours of the garden will be vibrant and changing every day. Remember that a garden is never finished, so take some time to sit and enjoy your space. Make a cup of tea or pour yourself a drink and enjoy the fruits of your labours.

It's also a great time to get out and about and visit local gardens for design inspiration and planting ideas. The Pals have visited some great local gardens, **Gresgarth Hall** in Caton is a favourite (open on the second Sunday of each month) and **Yewbarrow House** at Grange was a hidden gem with fascinating plants and stunning views of Morecambe Bay. (Open on June 6th and then the first Sunday of each Month until September). Both gardens also offer a very good range in refreshments too!

Meanwhile here are Gunther's suggestions for jobs in the summer months:

June

Cut down the foliage of bulbs making sure at least 6 weeks have passed since flowering.

Overcrowded spring flowering bulbs can be lifted, divided and replanted at this time.

Continue to sow salads for a continuous harvest.

Remove suckers from roses, it's better to pull them off as low as possible rather than cut them.

Put in supports for newly planted dahlias.

Ventilate and shade plants in the green house.

Sow basil seeds in containers outdoors.

Prune spring flowering scrubs.

July

If it's hot, water newly planted trees to stop them drying out.

Lift and divide bearded irises when they have finished flowering.

Lift early potatoes as well as shallots and garlic.

Deadhead flowering blooms to encourage new flowers.

Keep an eye out for infestations and diseases especially if the weather is damp and humid.

Train and tie back new growth on climbing plants to support them.

Prune wisteria by cutting back the whippy growths to within 5 or 6 buds off the main stems.

It's not too late to sow crops for an autumn harvest. Turnips, carrots, beetroot and lettuce will all still do well if watered regularly. Peas can also be sown until the end of the month.

Happy gardening! Gunther x



Selection of pictures
from our visit to Yew-
barrow House at
Grange.

Following on from the gardening tips above, Burton Pals With Trowels would like to say a **HUGE THANK YOU** to everyone who supported our fund raising event on Saturday the 15th May. From those who kindly donated plants, cakes and books to those who braved the English weather and turned out in large numbers to purchase the items on show. We made a fantastic £351.80 from the days event and every penny received will be ploughed back into the upkeep of the areas in the village that we look after.

We have many excellent books left over from last Saturday SO.....

PALS BOOK CAFE

On Saturday, 26th June Pals With Trowels will be hosting a BOOK CAFÉ from 10.30—12.30 in the Village Hall. This will be an opportunity to spend an hour or two browsing through a large selection of books whilst also sitting chatting to friends and neighbours over a coffee and delicious selection of home made cakes—what could be nicer?



So, do come along bringing any books you have read and enjoyed, that you would like to pass on or just simply pick up some new reading material for yourself.

All books will be free, just a small charge for coffee and cakes. We hope very much to make this a monthly social event, so put 'BOOK CAFÉ' into your diaries for SATURDAY, 26 JUNE!

SMART SIGNAL
 Aerial & Satellite Installation & Repair
 Wi-Fi & Home Network
 CCTV Installation

Ben Fawcett
 Frounts Cottage, Duke Street,
 Burton In Lonsdale
 015242 62017 – 07950028622
 smartsignal@outlook.com



TOTAL WELLBEING
 Beauty & Bodywork Salon

Sarah M Malkinson
 Sports Therapist IIST IJHHT

Sports/remedial massage, Aromatherapy,
 Reflexology, Indian head massage, Facials,
 Eyelash & Brow tinting
 Male/Female waxing
 St.Tropez express spray tan
 Hopi ear candles
 Fast Tanning Sun Shower

11 Station Road, High Bentham
 Tel. 015242 63223
 Follow us on facebook



WILL HAMBLING

PAINTING & DECORATING
 INTERIOR & EXTERIOR

WILL.HAMBLING@SKY.COM
 07858 572 336



The Piano Man
 Christopher Bethell

Professional tuner,
 servicing and repairing
 upright and grand pianos

07817 162686
 chrisbethell137@gmail.com




Bowland View coming soon!

Bowland View has been designed to offer independent living with access to on-site care for people over the age of 65*. A stylish new Extra Care Living development, providing one and two bedroom apartments for rent and shared ownership, and two bedroom bungalows for shared ownership**.

Key benefits and services:

- The privacy and security of your own home
- Dedicated Housing and Care Manager
- 24 hour emergency alarm
- Care team on-site 24/7
- Optional, tailored care and support
- Impressive range of communal facilities

*The age for Bowland View is 65 plus, however residents can qualify between the ages of 55 and 64 if they have a care and support need. **Eligibility criteria, monthly rent (up to 75% on shared ownership), care charges and service charges apply.

To find out more call us on 0345 608 4021, Monday - Friday, 9am - 5pm, or email newhome@housing21.org.uk

Bowland View, a development in construction on
 Scholars Rise | Bentham | Lancaster LA2 7FS

housing21.org.uk

Housing21
 Extra Value Living

Trying again!

On Saturday 5th July we will be holding a jumble sale at Ingleton Community Centre to raise money for the Lancashire and South Cumbria Breast Care Unit, based at Lancaster Infirmary. This was originally booked for June last year so we are really hoping that restrictions will be lifted in time for it to go ahead!

As I reminder, we're fundraising to say thank you for the wonderful care and treatment I received from the team there in 2019 and for their follow up support and surveillance program. We also hope to raise awareness of the importance of attending screening, after reading in clinic that too many women don't take up their invitations.

Steve, did a 10K run last year for which we received fantastic support, raising £1300 for the unit. However our resolve to double our original target of £1000 has been made stronger by the diagnosis and treatment of friends and family during the past year.

We know that many other people locally have also been touched by the unit at some stage and may also want to say thank you.

So we are a looking for donations of jumble, cakes, raffle and tombola prizes! Donations can be brought to Ingleton Community Centre on the morning of July 5th or left with us at 6 Duke Street, Burton in Lonsdale. We have limited storage but we can take it from you sooner if you need it out of your way! Please ring or text Caroline 07794353054 /62681 if you'd like us to collect. Please don't put off an invitation for screening or a concern about a change. Most things will be fine but early detection can make a big difference. Staff at the unit are glad to be able to put minds at ease and never consider a visit to be a waste of their time.

Caroline & Steve Hastie

Settle Pool - back in the swim

As the Covid lockdown regulations are gradually eased Settle Area Swimming Pool is increasing its number of weekly sessions. We are now also able to restart the popular Aqua Aerobics and Hydrolates sessions. However sessions still need to be booked on-line in advance and there are strict regulations to ensure covid safety, such as the need to arrive wearing your swimwear under outer clothing and to wear a mask whilst in the entrance area. Not surprisingly all sessions are proving popular so do visit the website <https://www.settleswimmingpool.co.uk/> and book your session well in advance.

Despite this increased usage the number of swimmers allow in the pool still remains severely limited and the costs of keeping the pool open are high, as a result our fund raising efforts are more important than ever.

The charity shop in Duke Street Settle continues to be a really important source of income in keeping the pool afloat – so to speak, so do call in when you are in the town. We also continue to need more helpers particularly for Sundays when we hope to open at a time when there are a lot of people around. If you are able to give a few hours on a regular basis – or even just cover occasionally as holiday relief then do get in touch with Anne Galloway on anne.gal@hotmail.com

Traditionally the pool's other important source of income was the paper recycling scheme: sadly that had to close in March 2020 at the start of the first Covid lockdown and we have not been able to resume due mainly to a shortage of volunteers. If you are reasonably active and are able to give a few hours a week and want to find out more about what's involved please contact Ian Gray on ianandmargaretgray@hotmail.com

Mike Smith

The Rotary Club of Lunesdale

On 15th April club members enjoyed a talk by a visiting Rotarian John Blowes entitled "Renewable Energy For The Home". We should all be aware that the planet's resources are being used up rapidly as the world's population grows and look to find ways to reduce our consumption. Since then we have had a business meeting and an AGM. On Thursday May 6th the club celebrated its 46th Charter (birthday) anniversary on Zoom. It was a pleasure to welcome District Governor Welma Robinson plus guests from several other Rotary Clubs together with family and friends. It was another of those occasions when the technology of the Zoom facility was invaluable eg I was able to welcome a member of my family, currently working in Dublin, to that meeting.

Paul Whittaker, who is profoundly deaf, was our guest speaker and it was very appropriate that he should be our speaker during Deaf Awareness Week! It was an absolute delight to listen to his talk. He is a talented musician and a real showman with a great sense of humour. He told how when growing up he was a quiet and shy boy but gave great credit to his super Mum for him now being positive, full of confidence and willing to try new things. He ended by playing the music of, singing and signing the lyrics of "Bridge Over Troubled Water" which was very emotional.

Next month members will welcome a new President and I shall hand over to my successor after what has been a very different year.

Keep safe, keep well.

Lilian

Rotary Santa Needs a New Trailer - Can You Help?

Following years touring the towns and villages in the Lune Valley, courtesy of Lunesdale Rotary Club, Santa's sleigh is in desperate need of replacement. Having brought much pleasure to young and old alike the club would like to help Santa continue his good deeds and provide him with new transport. The club would like to acquire a new trailer on which to rebuild his sleigh. We are looking for a lightweight, single or double axle, flatbed trailer around 3.0metre by 1.6metre in good condition. If anyone has such a trailer or similar that they no longer make use of could you please contact either Peter Irving on 07831 554318 or Richard Parsons on 015242 73073.

The club continues to meet on line but Rotarians are now looking forward to when the national vaccination programme is complete and to when restrictions are eased enabling face to face meetings to take place. On 25th April David Hood was our speaker. He is a member of the Rotary Club of Wirksworth, a great supporter of his local community involved with Scouts, the youth club and as a trainer of a young rugby squad. He is an ambassador for Aquabox set-up and managed by his club. These boxes provide safe drinking water instantly and reliably without the use of chemicals through the use of aqua filter technology, plus other necessary items of aid to crisis zones around the world. On 1st April members watched a video featuring that well known personality Esther Rantzen famous for Childline and Silverline. She claimed to miss President Trump because he provided her with

a laugh! Her greatest challenge and achievement was to have helped almost 5 million children who were suffering from abuse and neglect.

On 6th May the club celebrates its 46th Charter (birthday)celebration. This must also be on line using Zoom. The guest speaker is Paul Whittaker who has been profoundly deaf all his life. Despite his disability Paul is an inspirational musician, performer and workshop leader. Members look forward to inviting family and friends to share this special occasion with them.

Lilian

Hornby Lunesdale Probus Club

Lunesdale Probus club has been keeping in touch with members via Zoom meetings during most of lockdown but the novelty has worn off and we are looking forward to the time when we begin to properly emerge from Covid restrictions, hold our delayed AGM and plan for the future..

Then we can all meet up again and enjoy our social events and the usual informative and entertaining speaker programme.

For further information please contact.

Roger Carter

Hon.Secretary

Lunesdale Probus Club

015242 22283

Lune Valley Swimming Pool

The Hornby pool re-opened to the public as a planned on Monday 12th of April and is proving to be very popular.

It is of course currently operating under Covid roadmap schedules with social distancing and advance booking procedures in place.

But moving forward we plan to be able to offer adult exercise classes – **Aqua fit/Swim for Fitness and Gentle Exercise from 17th May.**

Please check out our website for updates and revised operating guidelines and timetables.

Above all come back and enjoy your pool , we so look forward to seeing you..

Website- www.lunevalleypool.com; Facebook – lune valley swimming pool.

Email poolmanager@lunevalleypool.com **Direct line pool telephone. (01524) 805666.**

Lune valley Community Society Ltd Charity no 1176086

Lunesdale Lawn Tennis Club, Ball Lane, Caton, LA2 9QN welcomes new members of all levels. We have two all weather courts and three grass courts and offer social tennis, League matches and coaching. Please see our website for further details and Membership Form.

Clubspark.lta.org.uk/LunesdaleLawnTennisClub

Helen Bramley



PROPOSED VILLAGE HALL EXTENSION

It's been a while since there was something in the *Burtonian* about the Village Hall extension. A lot of work has gone into this and several different layouts.

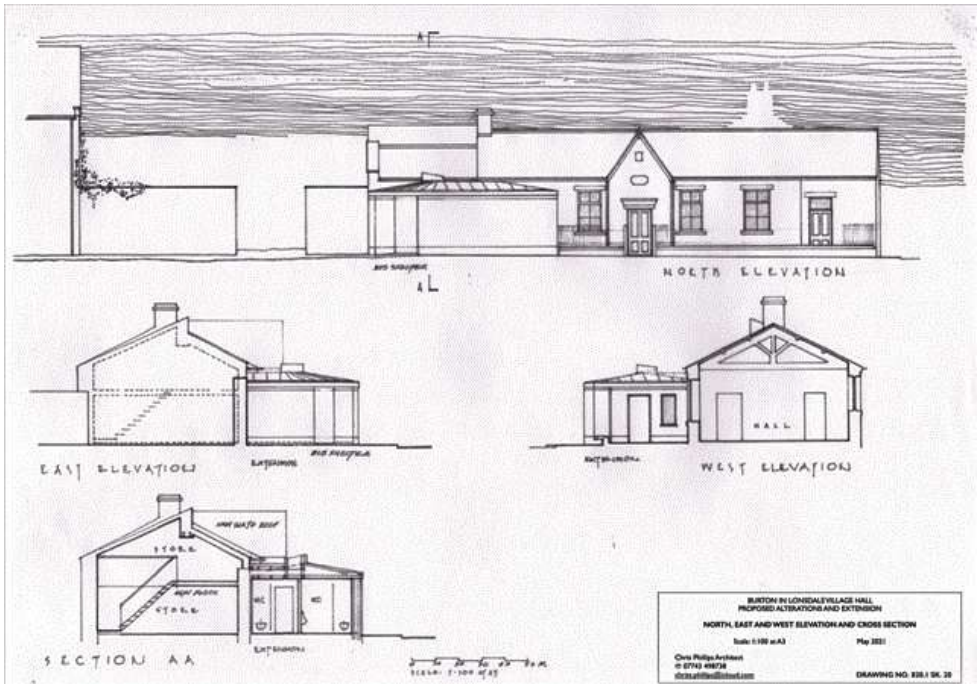
We now have a final plan.

The reason for the extension is principally to remove the old toilets, create new ones at the front of the building and, at the same time, to improve the space for the storage of equipment. This is really a jumble at present when the chairs have to be stored away along with two table tennis tables and lots of other stuff.

As you can see, the front wall creates space for a small bus shelter.

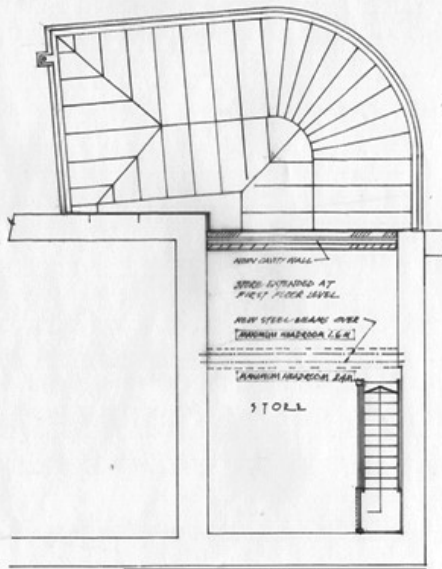
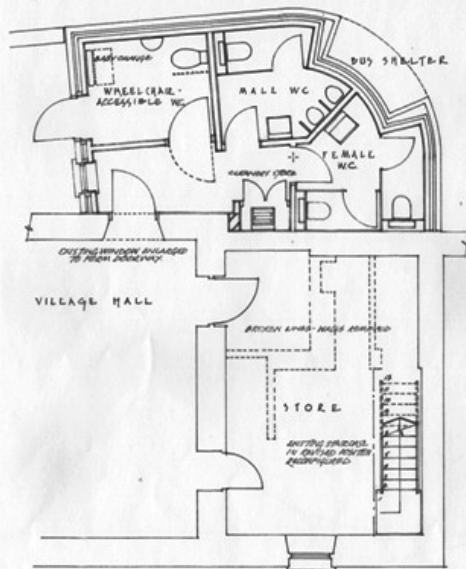
However, along with this, we may want to take the opportunity for some refurbishment of the inside of the hall. Perhaps some soundproofing to the ceiling, decorating, maybe some carpeting? Should we use the front door as the main entrance instead of the door near the kitchen?

Please have a look at the plans and let us have your views, we do want to move on with this and have more events in the Hall as we come out of lockdown.

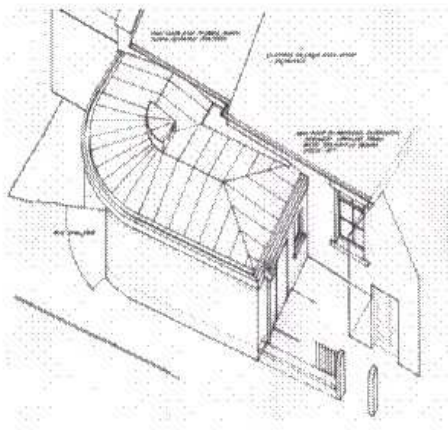


Why did the chicken go to the séance?

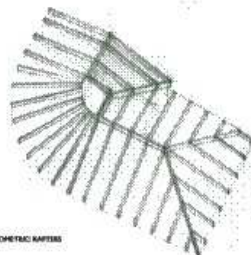
To get to the other side.



BURTON IN LONDON VILLAGE HALL
PROPOSED ALTERATIONS AND EXTENSION
GENERAL ARRANGEMENT: GROUND, FIRST FLOOR AND ROOF PLANS
Scale: 1:50 at A3 May 2021
Chris Phillips Architects
01774 498738
chris@burtoninlondon.com DRAWING NO. 628 I SK. 19



AXONOMETRIC: GENERAL ARRANGEMENT OF EXTENSION



AXONOMETRIC: RAFTERS



STANDING BAY TYPED CHARGES STEEL ROOFING

BURTON IN LONDON VILLAGE HALL
PROPOSED ALTERATIONS AND EXTENSION
GENERAL ARRANGEMENT AND CONSTRUCTION AXONOMETRICS
Not at scale May 2021
Chris Phillips Architects
01774 498738
chris@burtoninlondon.com DRAWING NO. 628 I SK. 21



Tai chi Qigong

Use the mind – free the body

Low Bentham, Victoria Hall
Mondays 6.15-7.45pm

Clapham Village Hall
Thursdays 9-10.30am

One-to-one tuition

**NO PREVIOUS EXPERIENCE
REQUIRED
ALL WELCOME TO JOIN AT ANY
TIME**

taichiqigongteacher@gmail.com

butler interiors

Designers, suppliers & installers
of quality German kitchens.

Call in at one of our beautiful showrooms in
Lower Bentham or Kirkby Lonsdale

Butler Interiors
Low Mills
Mill Lane
Low Bentham
Lancaster
LA2 7FL

015242 63388

Butler Interiors
Lane House Business Park
Kendal Road
Kirkby Lonsdale
Cumbria
LA6 2HH

015242 37747

www.butlerinteriors.co.uk

Holiday Cottage High Street, Burton in Lonsdale

Warm cosy well equipped cottage appointed to a very good standard.
3 Bedroom, Sleeps 5. Sorry no pets.
Weekly and shorter breaks are welcome.
Discount for friends and relatives of locals.

For more details please contact Heather
or Keith 07540 137715

B&W Funerals *James G Macdonald*

24 Hour Service Private Chapel of Rest



Ingleton, Burton, Bentham, Austwick,
Clapham, Settle, Wray, Hornby, Caton,
Kirkby Lonsdale

& all the surrounding areas

We offer our own Funeral Plans on request

6 Chapel Lane, Ingleton, Carnforth
LA6 3FX

jmfunerals@gmail.com

Office Tel: 015242 41293

Tel: 015242 61370 Mob: 07758002260

Gallaber Farm

Holiday Cottage and Caravan Park
Cottage with stunning views sleeps 4

A 5 and a 6 berth static caravan for
holiday rental

15 touring pitches with hook up points

For further details please contact Jennifer
Sedgwick on 015242 61361 or visit our
website www.gallaberfarm.co.uk

Bus 80: Ingleton - Bentham - Hornby - Lancaster

Monday to Saturday

Towards Lancaster	NS				S
Ingleton Community Centre	0615	0900	1135	1335	1435
Burton in Lonsdale High Street	0624	0909	1144	1344	1444
High Bentham Bentham Club	0633	0918	1153	1353	1453
Low Bentham	0636	0921	1156	1356	1456
Wennington The Green	0644	0929	1204	1404	1504
Wray Proctors Farm	0648	0933	1208	1408	1508
Hornby Lunesdale School	0654	0939	1214	1414	1514
Brookhouse Black Bull	0702	0947	1222	1422	1522
Caton Station Hotel	0706	0951	1226	1426	1526
Halton War Memorial	0716	1001	1236	1436	1536
Lancaster Bus Station	0728	1013	1248	1448	1548

Towards Ingleton

Lancaster Bus Station	..	1000	1200	1400	1725
Halton War Memorial	..	1014	1214	1414	1739
Caton Station Hotel	..	1025	1225	1425	1750
Brookhouse Black Bull	..	1029	1229	1429	1754
Hornby Lunesdale School	..	1039	1239	1439	1804
Wray Proctors Farm	..	1045	1245	1445	1810
Wennington The Green	..	1050	1250	1450	1815
Low Bentham	..	1100	1300	1500	1825
High Bentham Bentham Club	..	1104	1304	1504	1829
Burton in Lonsdale High St.	..	1113	1313	1513	1836
Ingleton Community Centre	..	1122	1322	1522	1845

NS = this journey does not run on Saturdays

S = this journey only runs on Saturdays

Between Wennington and Low Bentham this service now operates via Ravens Close Brow and Burton Road, and no longer stops at The Punch Bowl.

Service 80 does not run on Sundays or Public Holidays.

See separate timetable for Northern DalesBus service 830 on Summer Sundays.

USEFUL WEBSITES

Rural Bulletin

www.rsnonline.org.uk/

Craven District Council

www.cravendc.gov.uk/community-living/get-involved/community-news-newsletter/

Northern Gas Networks

<https://ngnceg.co.uk/>

Allerton Waste Recovery Park

<https://wasteservices.amey.co.uk/where-we-work/north-yorkshire/>

Community First Yorkshire

<https://mycommunity.org.uk/>

The Bentham Line

Mondays to Saturdays

Bentham	0603	0935	1538	2040
Wennington	0608	0940	1543	2046
Lancaster	0631	1006	1607	2114

Sundays (BUS)

Bentham	0718	1318	1918
Wennington	0738	1338	1938
Lancaster	0803	1403	2003

Mondays to Saturdays

Lancaster	0648	1046	1745	2131
Wennington	0711	1109	1809	2157
Bentham	0717	1115	1815	2202

Sundays (BUS)

Lancaster	0600	1200	1800
Wennington	0625	1225	1825
Bentham	0645	1245	1845



IAN AKRIGG

FRIENDLY & PROFESSIONAL ADVICE

☎ 07539626044 f /I.Akrigg/

CALL FOR A FREE QUOTE & MEASURING SERVICE



Graham Fawcett Plant Ltd

Unit 3, Bentham Industrial Estate
Bentham LA2 7NB

015242 62888 sales@fawcettplant.co.uk

GARDEN MACHINERY SERVICING & SALES

Mowers • Chainsaws • Hedgetrimmers • Blowers

New **ALPINA** mower range now in stock
HONDA/ Briggs & Stratton petrol engines
P/EX WELCOME – Mowers to suit all budgets



USE YOUR POST OFFICE

Burton Community Shop
High Street

**Five mornings a week
9am to 1pm
(No afternoon service)**

*Visit Carolyn or Julie or June and
discuss your requirements
or ring **63397** for information*

YOUR Post Office provides:

- **FREE** payment of utility, council tax and other bills with instant receipt
- Draw cash from **ALL** high street bank & building society accounts
- Buy & sell foreign currency and travel insurance at competitive rates

Open Wednesday & Thursday 5-11pm
Friday & Saturday 4 - 11pm
Sunday 12noon - 11pm

Food Served Wednesday & Thursday
 5.30pm – 8pm
Friday & Saturday 5.30pm – 8.30pm
Sunday Lunch 1- 5pm

Traditional Sunday Roast from 1pm-5pm



Good Food, Real Ale, Beer Garden, All Welcome

9 Low Street, Burton-In-Lonsdale, LA6 3LF

015242 61298

www.punch-bowl.co.uk