



The **Burtonian**

Burton in Lonsdale
Village Newsletter *Number 94*
Oct / Nov 2019

PRICE: 25p / FREE to residents

Village Websites ...

www.burton-in-lonsdale.net
www.burtonshop.co.uk
www.burtonsports.co.uk
www.burton-in-lonsdale-village-hall.co.uk

And do look up the various Facebook pages of the Village, the Shop, the Village Hall, Sports, Stay & Play, the Punchbowl

As Summer melts away and Autumn takes hold, one of the biggest changes we notice is to be found in the garden, and as always, the Burtonian has some excellent tips for preparing the garden for the winter. The new season of Film Nights is under-way and inside this issue you will find a list of films taking us through to February 2020. Please also note the piece about this years' Remembrance Service below.

Of special interest in this edition you will find the first of a series of articles by Gwen Harris, who has recently embarked on a period of voluntary work in Myanmar, we wish her much luck and success in her venture and look forward to hearing more of her experiences in this troubled country.

David & Marilyn

burton.news@gmail.com

Remembrance Service

For many years Bryan Woolnough was the star of the show wearing all his campaign medals, and we all miss him in the village. But there are other ex service people in the village (and some still serving) and I would like to make contact with you if you would like to take a positive part in the Remembrance Service this year. There were many celebrations last year to mark the 100 years since the end of the War to end all Wars, but we know that since 1918 there has only been one year when British Forces were not engaged in a campaign. Service men and women are still being injured and killed and we should acknowledge their sacrifice.

If you have or have had a link with the services I would like to hear from you, either via email, allsaintscw@gmail.com or a note in the village shop.

The wicket being rolled, cut and lined, cream teas and cakes being made, the odd set of old cricketing whites being looked out from the bottom of the cupboard and a very close eye being kept on the weather forecast. Yes what else can it be but the annual cricket match. Despite the fact that the match had been postponed by a week, due to the poor weather, there was a very good crowd supporting what turned out to be an excellent game. In a high scoring match there were many sixes scored along with notable performances from players on both sides with the victory this year going to Shaun's team.

How lovely it was to see players who spanned seven decades of village life with the eldest player being 76 and the youngest only 11!

The cricket teas were as good, if not better, than in previous years. With the impending forecast the start time was brought forward so that both innings were to be played before any adjournment for tea. It turned out that forecast was totally accurate, as at the end of the presentation of the prizes, the heavens opened just as the players headed into the pavilion for their well earned tea.

Thanks again go to Mark who umpired, David who kept the score, to Mairi, Ann, Sue, Anna, Heather and Carole who provided and served the teas, but most of all to the players and the spectators who supported us without whom the match would not be possible.



Bentham Bridge Club

For many years the Bridge Club has met at Bentham Golf Club but they can no longer accommodate us. We are now meeting at Burton in Lonsdale Sports Pavilion on Monday evenings. We commence at 7 pm and a small charge is made. We would be very pleased to welcome any new members. If you are interested you can get in touch with Ruth Brown on 62200.

Regular Events

Lonsdale Archers	every Sunday	16:00	Recreation Field	
Bentham Bridge Club	every Monday	19:00	Sports Pavilion	see P2
Table Tennis	every Tuesday & Thursday	10:00—11:00	Village Hall	
Circuit Training	every Wednesday	19:00—20:00	Village Hall	
<i>Contact: Mark on 264879 or 07843 187744 or markchristie101@outlook.com.</i>				
Stay & Play	every Thursday	10:00 – 12:00	All Saints	see P15
Coffee Morning	every Friday	from 10:30	Methodist Church	
<i>charity donations welcome</i>				
Run in the Park	every Saturday	09:30	Recreation Field	see P18
Lonsdale Wheelers:	regular club rides. Club Secretary Ian Clarke			

Contact: clarkeian@me.com

DATES FOR YOUR DIARY

<i>date</i>	<i>time</i>		<i>notes</i>
28.Sep	13:15	16:45	Village Sports & Fun Run see page 18
30.Sep	19:30		Ewecross Historical Society see page 26
02.Oct	21:00		Quiz Night in the Pub Punchbowl
03.Oct	19:30		Burton WI - see page 13
06.Oct	11:00		All Saints' Harvest Festival see page 11
06.Oct	12:15		Harvest Lunch - any gifts (produce or money) goes to St John's Hospice in see page 11
08.Oct	19:00		Film Night (film starts at 19:30) see page 11
10.Oct	19:30		Dominoes Burton Village Hall
10.Oct	20:00		PALS meeting Punchbowl
11.Oct	20:00		Bentham Film Group - the 2019 film 'All is see page 15
15.Oct	19:30		Hornby Pool - First Annual General Meeting see page 9
16.Oct			National "Re-start a Heart Day" see page 12
16.Oct	21:00		Quiz Night in the Pub Punchbowl
19.Oct	14:30		Concert&Cakes – the Larisa Trio see page 21
20.Oct	10:00	16:00	Book Fair see page 7
21.Oct	19:30		Ingleborough Archaeology Group - John Cockshott, The Origins of Roman Ilkley. see page 26
26.Oct	10:30	15:30	Dolls House Exhibition see page 12
26.Oct	12:00	16:00	First Aid/Defibrillator awareness training day see page 12
28.Oct	19:30		Ewecross Historical Society see page 26
30.Oct	21:00		Quiz Night in the Pub Punchbowl
07.Nov	19:30		Burton WI - Annual General Meeting Burton Village Hall
12.Nov	19:00		Film Night (film starts at 19:30) see page 11
13.Nov	21:00		Quiz Night in the Pub Punchbowl
14.Nov	19:30		Dominoes Burton Village Hall
14.Nov	20:00		PALS meeting Punchbowl
16.Nov	14:30		Concert&Cakes – Ensemble Cosmopolitan see page 21
23.Nov			All Saints' Advent Fair Burton Village Hall
27.Nov	21:00		Quiz Night in the Pub Punchbowl
28.Nov	19:30		Parish Council Meeting Burton Village Hall
30 Nov -			1st Nativity Crib festival weekend / a new event for the village calendar
01 Dec			NEW issue of the Burtonian
10.Dec	19:00		Film Night (film starts at 19:30) see page 11
12.Dec	19:30		Dominoes Burton Village Hall
12.Dec	20:00		PALS meeting Punchbowl

From Burton to Bangkok - by your own Foreign Correspondent

My last week at home, knowing that I am going away for a year, heightens the appreciation of what I am going to miss. I look wistfully for a last time at the boughs of the damson tree, laden with blue egg sized fruit and the apple tree heavy with luminous green Bramleys, all due, sadly, to ripen after I leave. On the coach to the airport, Keats 'Ode to Autumn' comes to mind'. Seasons of mists and mellow fruitfulness' I murmur self-indulgently as the patchwork of golden fields, the hay already cut and gathered, unfurls. At this time of year in the U.K., life seems soft and soporific.

Not so, when I land in Bangkok. Speeding in a taxi along the highway into the city, skyscrapers and billboards dominate the scenery. As we slow to a crawl downtown, I notice a large screen advertising what I take to be flu medicine. An image of an attractive young woman with a thermometer in her mouth looking slightly hot and bothered appears. Under the Thai script, an English strapline flashes up. 'Happiness is everything'. I conjecture that it probably is, but that if I were to be unfortunate enough to get ill here, I would probably prefer 'Get me to a good doctor'. Maybe the meaning is lost in translation.

I am here to obtain a visa for Myanmar where I am heading to work on a teacher training project with Voluntary Services Overseas or VSO, for those in the know. Having left my documents at the Myanmar embassy first thing in the morning, I wander back to the hotel. Passing the Sri Maha Mariamman temple and its riotously multicoloured tower of figures, I hear the discordantly loud sounds of Indian flutes emerge from inside, and being nosy, take off my shoes to enter and join the worshippers. A pale bare-chested Brahmin priest appears clad in a simple white cloth with a border of blue, his forehead white with a band of creamy powder. With wire rimmed glasses and silver earrings, he looks rather like an accountant who has taken a day off from studying figures to do something more interesting. Two dark young men wearing their long black hair in topknots, similarly clad and carrying lighted lamps, flank him. The acolytes look both strangely timeless and modern, resembling characters out of an Indian film epic set. The priest pauses in front of the various statues and, receiving the lamps, swings them efficiently in circles. One of the statues is so dark that, disconcertingly, only the bright yellow circle surrounding the face is visible. After the completion of the ceremony, a queue of devotees form, each one carrying a plate bearing a whole coconut, incense, fruit and lotus flowers. In turn, they offer these at the main shrine and in return, the priest places a thumbprint of ash on their foreheads. I later find out that the worship of Sri Maha Mariamman is meant to cure chickenpox and other infectious diseases. Maybe she would be as effective as the 'Happiness is everything' medicine.

Bangkok has all the modern international symbols of wealth. I pass a large building selling Dior and further on, more prosaically, Boots and Kentucky Fried Chicken. The lighted entrance to a shiny new shopping mall winks and beckons. Outside, the street is lined with stall holders frying pork kebabs, boiling noodles and fish balls for those hurrying to and from work. At the lowest level, seated at intervals along the pavement, others try to scratch an existence. An old man with Chinese features above a long grey wispy beard plays a flute, a young woman makes a broom head by binding sticks, a disabled man sells horoscope cards. The air is heavy with moisture and traffic fumes. This is a city of layers, the gilded and glittering nearly obliterating those underneath.

Later that day I collect my passport. One year's business visa. My photo makes me look slightly startled. Yangon, here I come!

Gwen Harris

Full Days Available!



Happy Days at
Busy Bodies
Pre School

All 3 to 4 year olds can access 15 hours per week of free early years entitlement. Some 2 year olds are also eligible if criteria met.

Session Times
Monday, Tuesday & Thursday

Morning Session - 9am-12.30pm - £14.00 (includes lunch period)
Afternoon Session - 12.30pm - 3pm - £10

Full Day - £24.00

(A school lunch can be provided upon request for £1.10)

Busy Bodies Pre School,
c/o Melling St Wilfrid Church
of England Primary School,
Lodge Lane,
Melling,
LA6 2RE.
015242 21538 Ext 2



Bay Vets
"The Community Vets"

Inspiring trust, passion and care to deliver excellence to pets and their families.

Lancaster 01524 32696
Morecambe 01524 410867
Milnthorpe 015395 62770
Caton 01524 770615

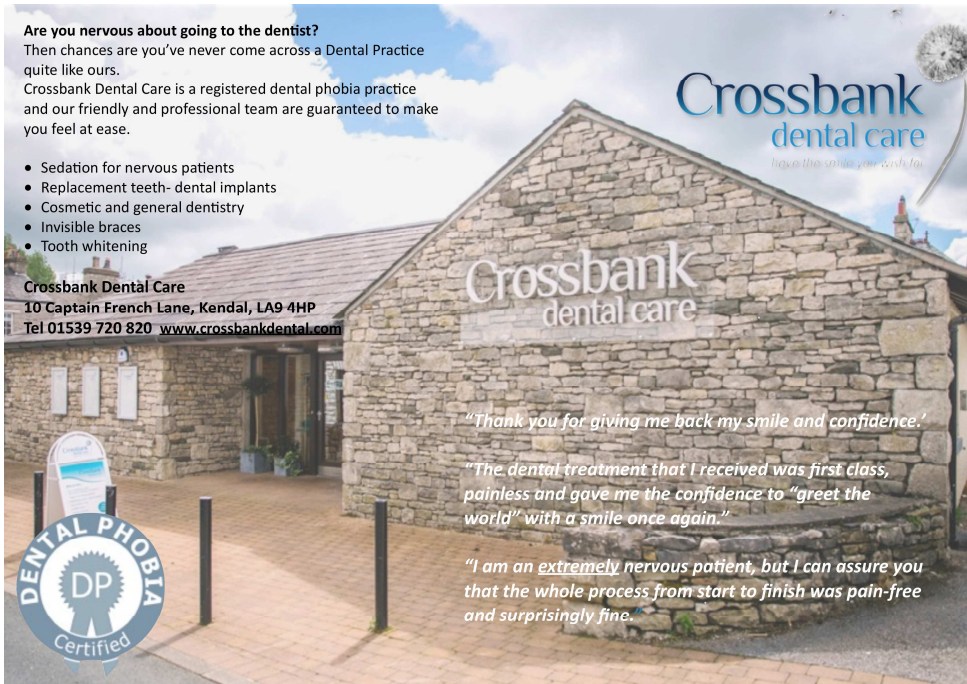
24 hours emergency service

info@bayvets.co.uk
www.bayvets.co.uk

Are you nervous about going to the dentist?
Then chances are you've never come across a Dental Practice quite like ours.
Crossbank Dental Care is a registered dental phobia practice and our friendly and professional team are guaranteed to make you feel at ease.

- Sedation for nervous patients
- Replacement teeth- dental implants
- Cosmetic and general dentistry
- Invisible braces
- Tooth whitening

Crossbank Dental Care
10 Captain French Lane, Kendal, LA9 4HP
Tel 01539 720 820 www.crossbankdental.com




Crossbank dental care
helps the smile you wish for

Crossbank dental care

"Thank you for giving me back my smile and confidence."

"The dental treatment that I received was first class, painless and gave me the confidence to "greet the world" with a smile once again."

"I am an extremely nervous patient, but I can assure you that the whole process from start to finish was pain-free and surprisingly fine."



Bentham Area Refugee Support Group

And what a weekend it was!

Asylum Seekers and Refugees from the Red Cross Bradford Centre for those experiencing destitution joined residents in Ingleton, Bentham, Burton, and Austwick for a weekend of warm Yorkshire hospitality, friendship, and respite from the struggles and pressures of their life situations. Our 21 visitors were from Libya, Sudan, Pakistan, Iran, Eritrea, and East Turkey this year, all in different stages of the asylum and refugee process. We laughed and listened, and shared stories of pain, trauma and joy together. While the weather was unsettled, it did not spoil the enjoyment of the weekend and the bonds that developed between host and visitors.

Our huge thanks go to all our amazing team of hosts and helpers. We can't name everyone and all the different ways in which so many people helped, but have to mention Bibbys of Ingleton for affordable transport and Craven District Council for the grant of £200 towards this, the Looking Well for a space to share food together, Robert Taylor from Bentham Town Council for his welcome, and Stephen and Andrea Dennis for making us so welcome at their farm and providing the thrill of the trip with 3 frisky bullocks! Burton Recreation Ground loaned us the sports pavilion and pitch, Mark Christie and his team brilliantly improvised archery and bocce which got everyone involved on a wet afternoon, Burton Village Hall allowed us to set up early, and Gwenda Meredith and the band had all our feet tapping and made the Ceilidh such incredible fun. We are grateful too, to White Scar Cave which kindly accommodated us at short notice due to the weather, and to Yorkshire Dales National Park, which waived the car parking fees at Clapham for us. Westhouse Methodist Church provided the perfect ending to the weekend with a warm welcome and a sumptuous lunchtime feast and space for us all to join hands to sing 'We'll meet again.....', sentiments and hope shared by all.

And what else? Annie has recently taken a van crammed with all sorts to help 2 families in Lancaster who have just been housed, had nothing and needed everything, and she and I welcome donations of goods and toiletries which we take to Bradford, Lancaster or Help Refugees. We will be meeting soon to plan further events and our next steps, so watch this space. It is never too late to join us – email or phone – there is so much to be done.



Maggie Bruno davidmaggiebruno@gmail.com 015242 61616

The Rotary Club of Lunesdale

Another Rotary year has dawned and Miles Leadbetter is the new District Governor at the helm. On 30th June some members went to Barton Grange for the handover from the outgoing Governor. The title of Miles's inaugural speech was "Together We Can". It was a thought provoking speech encouraging members to "Think Differently" especially in terms of recruitment and winning new members. Recruitment is a problem area for all charity organisations in today's busy world which makes so many demands on our time. However it was so uplifting to hear about the many worthwhile causes supported by Rotary on all levels making a positive contribution of help where, how and when it is needed around the world.

At local level members have welcomed speakers each with a topic we are familiar with. There was a prolonged question and answer session after each of the speakers. On 1st August Ben Cross, Manager of Booth's Kirkby Lonsdale store, talked about the history of the company and how it has grown to its present day position. He stressed how the company is keen to be involved in local communities. On 8th August Sarah Garmin spoke about the incredible work done by the Bendrigg Trust. Andrea Toghy spoke about the charity shop in Bentham which raises money to help people suffering from the condition Scoliosis or Curvature of the Spine.

At the time of writing this article we look forward to an evening of Jazz with High Society at the Victoria Institute Bentham. All proceeds from the evening will be divided between The Community Link Cafe Low Bentham and Age Concern High Bentham. As always a big thank you to everyone for your support on this occasion.

Lilian Barton

Sunday 20 October

Book Fair, Clapham Village Hall, 10.00am – 4.00pm. A wide range of second-hand, out-of-print and antiquarian books for sale, also classical CDs – ring 015395 35125 for further details.

Bentham Community Primary School

Is your child aged 3+? Are you looking for Nursery provision locally?

Bentham CP School has a Nursery class for children aged 3+, led by a qualified teacher

15 hour Universal Funding available (9.00am-12.00noon every day)

30 hour funded places available (9.00am—3.00pm every day, option to extend to 3.30pm)

Transition to a Reception class in any school will be accommodated, including to Bentham CP School.

Come and visit us in action 015242 61412

Headteacher: Mrs Claire Pearson





GARDEN WITH GUNTHER



The Pals had a summer break from village activities during August but will meet during September to start making plans for tidying up and more bulb planting etc. BUT what we need right now are **NEW MEMBERS**. If fun and companionship with a bit of village en-

hancement thrown in sounds good, then "Pals with Trowels" is for you. We meet on the second Thursday of the month, 8pm in the Punchbowl. Give it a go!

There are still many jobs to do in the garden before winter arrives and David Thornber advises on these for October and November.

OCTOBER

Sweep up fallen leaves as these provide hiding locations for slugs and snails. Use them to make leaf mould or incorporate them into the compost heap.

As the garden is tidied in preparation for winter, lots of vegetation is collected that is suitable for composting. To encourage it to rot down quickly turn the contents of the compost heap, stir it up and allow in lots of air.

Bare root hedging plants are now available and it is a great time to plant them as well as moving and transplanting existing shrubs in the garden.

Planters that have lost their summer colour can be planted up with winter bedding such as Pansies, Cyclamen and Polyanthus. These are good for adding a splash of brightness along with winter flowering Heathers.

Beware of the build up of autumn debris on lawns. It can brown off the grass by taking much needed light, so rake clear.

Tie in wayward stems of climbers, especially Rambling Roses before the winds snap them off and spoil next year's show. When tying, aim to fill the frame, trellis or support by gently bending and manipulating stems to fill any gaps.

Pelargoniums planted in borders or pots outside should be brought indoors if you want to over-winter them. Cut them back with secateurs to 10cm and store them in a cool, light place such as an unheated greenhouse or porch.

Remove un-used plant supports from the borders and store away for next season. Check that newly planted trees and shrubs are well firmed in as strong winds can create "wind rock" which loosens the roots forming a gap at the base of the plant. This will collect rain-water, eventually freeze and damage the root system.

NOVEMBER

Lift Dahlia tubers at the start of the month to store dry and frost free over the winter months. Remove any dead foliage before storing them.

Raise planters on the patio off the ground by using bricks or "pot feet" to prevent water-logging and take away any saucers that will hold excess water.

Edge your lawn as this is easy to do in the winter months once the borders are cleared. Edging creates a neat and tidy appearance and helps make maintenance easier throughout the year.

This is a good time to plant bare-rooted roses and shrubs as the plants are entering their winter dormancy period and can be planted now and be left to establish over the winter before bursting into growth again next spring.

November is the time of year when wingless female winter-moths climb trees to lay eggs. The caterpillars of these moths go on to eat the leaves and thus have a devastating effect on fruit trees. The solution is to fit grease bands around the trunk and possibly the tree stake. These should be placed around 45cm above the soil level, the tacky grease will catch the pests before they get into the branches.

It is advisable to check regularly plants being over-wintered under glass to make sure they are keeping healthy and free from disease. This can be prevented by removing any leaves that may become discoloured.

Watch out for hibernating Hedgehogs, always check bonfires prior to lighting as they like to settle in under twigs, log piles and leaf litter.

HAPPY GARDENING, GUNTHER



LVCS Lune Valley Pool - Happy Birthday!

It is just a year since the pool in Hornby was re-opened following a technical refurbishment and superb modernisation by community volunteers..

The team at LVCS wish to thank community volunteers , local schools, clubs and public swimmers and all those who have done so much

to get the pool up and running and have supported us during this first very exciting and eventful year.

The first **LVCS AGM** will be held on **Tuesday October 15th in the Hornby Institute at 7.30 pm**

This most valuable Lune Valley asset needs the support of the community to survive and prosper.

We need your input - it's your pool ! Please come along , meet the team and tell us what you think.

We would like to see a full house so that we can discuss and approve our plans for the future.

Any matters to be raised at the AGM should be submitted to Bob McGachie Chair of LVCS. chairman@lunevalleypool.com.

Even if you can't make it to the AGM do please keep in touch -

Call in anytime or check our website and Facebook as follows. www.lunevalleypool.com

Facebook *lune valley swimming pool*.

Email poolmanager@lunevalleypool.com (01524) 805666



Total Wellbeing
Beauty & Bodywork Salon

Sarah M Malkinson
Sports Therapist IIST IIHHT
Beauty Therapist

11 Station Road
High Bentham
LA2 7LH
www.totalwellbeing-bentham.co.uk
Tel: 015242 63223



Langcliffe
Kennels & Cattery

Top quality, professional care for your
cats & dogs in our safe, comfortable
& clean purpose built facilities
- Open 7 days -

tel. 01729 822393

email: info@langcliffekennels.co.uk • web: www.langcliffekennels.co.uk

Howsons Lane, Langcliffe, Settle, North Yorkshire, BD24 9NG

Gallaber Farm

Holiday Cottage and Caravan Park

Cottage with stunning views sleeps 4

A 5 and a 6 berth static caravan for
holiday rental

15 touring pitches with hook up points

For further details please contact Jennifer
Sedgwick on 015242 61361 or visit our
website www.gallaberfarm.co.uk



i.akrigg
CARPETS • VINYL • RE-FITTING

IAN AKRIGG
FRIENDLY & PROFESSIONAL ADVICE

☎ 07539626044 f /I.Akrigg/

CALL FOR A FREE QUOTE & MEASURING SERVICE

Pi rates

*Bentham
Melling
Caton
Wray*

Call Anne: 22425
or 07935803370
anne.pilates@yahoo.co.uk



Get fit . . . Stay fit . . . Love life



Jemma Kellett

Freelance Hair Design

Tel: 07712439923



**OGLETHORPE
STURTON &
GILLIBRAND**

Friendly, professional legal advice
Individuals | business | agriculture
Call us today: 01524 846 846

LANCASTER | KIRKBY LONSDALE
www.osg.co.uk

BURTON IN LONSDALE FILM NIGHT FORTHCOMING PROGRAMME

October 8—Sometimes, Always, Never

A man searches tirelessly for his missing son who he has not seen in years. When a body is located, the entire family's life is turned upside-down and they must all learn how to reconnect with one another. Starring Bill Nighy and Jenny Agutter.

November 12—Late Night

A late-night talk show host's world is turned upside down when she hires her first and only female staff writer. Originally intended to smooth over diversity concerns, her decision brings about unexpectedly hilarious consequences as the two women who are separated by culture and generation become united by their love of a biting punchline. Starring Emma Thompson.

December 10—Runaways

After their home life is turned upside down three children and the family's donkeys escape across the backbone of Northern England, confronting both the harsh landscapes and what it means to be siblings. A throwback to classic children's adventure films but with a modern aesthetic. Filmed entirely in North Yorkshire, this film comes highly recommended from Eden Arts.

January 14—Yesterday

A struggling musician realizes he's the only person on Earth who can remember The Beatles, after waking up in an alternate timeline where they never existed. Directed by Danny Boyle.

February 11—Downton Abbey

The feature film of the television series, need I say more! The usual cast plus a few surprises. In cinemas now to rave reviews.

Please note that all these films will be shown this season, but the order of showing may be amended at short notice as this is dependent upon when the distributors release them for us to show. Runaways and Downton Abbey will be released to us before they become available for general sale and therefore these are the two films that may be subject to a change of month.

Thank you to everyone who turned out to see Rocket Man, a great attendance almost beating that for Bohemian Rhapsody!

All Saints' Harvest Festival.

Will be held in the church at 11 am on Sunday 6th October, followed by a Harvest Lunch at about 12.15. All are invited - and if you do not wish to join the service, feel free to join us for lunch at 12.15. Any gifts (produce or money) goes to St John's Hospice in Lancaster.

DOLLS HOUSE

Do you have, perhaps on proud display, or maybe tucked away in the attic, a doll's house? It doesn't matter whether it's large or small; old, or very new; in good condition or a bit dilapidated; maybe the only thing that matters is that it *means* something to you.

We are putting on an exhibition of doll's houses in the village hall on 26th October, 10:30—15:30, with the aim of raising some funds for our children's play area down by the playing fields.

If you have a doll's house to show, or are interested in helping with such an event, please speak to Carolyn in the Post Office, or with Hayley Fawcett.



First Aid/Defibrillator awareness training dates

First of all, it is the National “Re-start a Heart Day” on 16th October 2019; and, locally, there is an “Awareness Day” from 12-4pm on Saturday 26th October 2019, at Ingleton Community Centre.

This will provide basic life support hands-on training, and defibrillator training.

SAM KNOWLES
PAINTING & DECORATING
www.painterdecoratorlancaster.com

THE COMPLETE PAINTING AND
DECORATING SERVICE, WE ARE AN AWARD
WINNING BUSINESS RECOGNISED FOR
OUR GREAT CLIENT RELATIONS

INTERIOR AND EXTERIOR
DOMESTIC AND COMMERCIAL
THE BAY AND SOUTH LAKES
TEL 01524 401 788
MOB 07827 870 292

Safe Trader
Scheme

Winner of The Safe Trader Customer Feedback Award
2013, 2014, 2015, 2016, 2017 and 2018.

Settle Photographic Group

www.settlephotos.org

Monday 7th October 2019 19.30 Townhead Court, Settle

Ray Bramhall - All Kinds of Everything

We thoroughly enjoyed Rae Bramhall's last visit – it was a fascinating evening. This one should be just as good.

Monday 21st October 2019 19.30 Townhead Court, Settle

Print Competition with member-led comments

A chance to show off your favourite photographs.

Gallery – Memories of Summer

Tuesday 22nd October 2019 14.00

Visit – Salt Lake Quarry

A fascinating corner with interesting rock formations and there should be some autumn colours.

Monday 4th November 2019 19.30 Townhead Court, Settle

The Big, Big Camera and other stories - Ian Beesley

Look on line and you will find masses about this internationally renowned photographer. We are so lucky to have him come to Settle again.

Monday 18th November 2019 19.30 Townhead Court, Settle

YPU Exhibition Guidance plus DVD/Prints

Gallery – All Kinds of Everything – inspired by Ray Bramhall's talk.

Wednesday 20th November 2019 10.30

Visit - Kirkby Malham Church and Airton

Will we get there this time? The snow stopped us last time. A truly interesting church and a chance to take a walk up above the church to get a bird's eye view.

For information about our meetings and visits look on the spg website at

www.settlephotos.org.

See the next page for exhibition winners

Burton WI

We are looking forward to our 3rd of October Meeting when we are welcoming John Dawson from Bleak Bank Farm, Newby. John is a very entertaining speaker who has become famous for appearing on 'The Yorkshire Dales and the Lakes' on Channel 4 when his farming life throughout the year was featured. It should be a really good evening. Visitors welcome.

Our November meeting is our Annual General Meeting. Further details will be posted on the Village Hall notice board.

Ruth Gill, Programme Secretary

Always remember you're unique, just like everyone else.

We are Microsoft. Resistance Is Futile. You Will Be Assimilated.

As ever, visitors to the exhibition were able to vote for their favourite images.

The most popular images with the public were:

1st	Beast from the East	John Cooper Smith
2nd	Time Passing	Rod Smith
3rd =	Wenning Oak	Sue Best
	Among the Hills	David Crutchley
	Two Trees on Southernscales	Gill Pinkerton

The results of a year long challenge to try something new saw Yvonne Fairclough's high key imagery come out on top.



Bentham Film Group

Bentham Film Group will be showing the 2019 film 'All is True' (Cert PG-13) at Bentham Town Hall on Friday 11th October.

Shakespeare's final days are the subject of this film, which was written by Ben Elton and directed by Kenneth Branagh (who also plays the part of the Bard).

The year is 1613. Shakespeare is acknowledged as the greatest writer of the age. After his famous Globe Theatre is burned to the ground, he is so devastated he returns to Stratford, to his neglected family and his troubled past....but more problems await him.

The film also stars Ian McKellen, Kathryn Wilder and Judi Dench.

As usual, the film starts at 8pm with tickets costing £5 on the door. There will be an interval with a raffle and refreshments.

Stella Hall

BURTON VILLAGE SHOP

We would just like to say a Big Thank you to everyone who has donated their home grown produce through the summer months.

We have had green beans, plums, apples, damsons, tomatoes, courgettes, marrows, and even Burton strawberries.

Please look out for our Christmas cards and wrap arriving soon.

We will also be taking any Christmas orders as usual.

We still have our monthly offers at amazing prices including many great deals on wine.

See you soon

From all at the shop.



ALL SAINTS STAY AND PLAY

All Saints Stay & Play group for little people under school age has some thank yous to say. We returned after our summer break on September 12th to find a lovely new storage unit which takes all our toys, and a low blue table and blue and red chairs which are the right size for us to sit at! We would like to thank Burton in Lonsdale Parish Council for their community grant which enabled us to buy the storage unit, and Concert & Cakes who gave us money to buy the table and chairs. When you are next in church come and see these new things, or visit us one Thursday between 10 and 12 noon.

We break for half term on Thursday October 24th.

Thank you.

**butler
interiors**

Designers and Installers
of high quality German
Schuller & Next 125
kitchens.



CALL US: 01524 263388

Unit 3, Low Mills, Mill Lane, Low Bentham, near Lancaster LA2 7FL

Email: sales@butlerinteriors.co.uk

www.butlerinteriors.co.uk



B&W Funerals

James G Macdonald

24 Hour Service Private Chapel of Rest



Ingleton, Burton, Bentham, Austwick,
Clapham, Settle, Wray, Hornby, Caton,
Kirkby Lonsdale

& all the surrounding areas

We offer our own Funeral Plans on request

39 Main Street, Ingleton, Carnforth
LA6 3EH

Office Tel: 015242 41293

Tel: 015242 61370 Mobile: 07758002260

SMART SIGNAL

Aerial & Satellite Installation & Repair

Wi-Fi & Home Network

CCTV Installation



Ben Fawcett

Frounts Cottage, Duke Street,

Burton In Lonsdale

015242 62017 – 07950028622

smartsignal@outlook.com

STONWORKS BUILDING SERVICES

All aspects of stone building
Including Walling, Repointing,
Restoration, Pillars and Patios
Free Estimates

Dan Evans 07904902503



Tai chi Qigong

Use the mind – free the body

Low Bentham, Victoria Hall
Mondays 6.15-7.45pm

Clapham Village Hall
Thursdays 9-10.30am

One-to-one tuition

**NO PREVIOUS EXPERIENCE
REQUIRED**

**ALL WELCOME TO JOIN AT ANY
TIME**

taichiqigongteacher@gmail.com

History is a people's memory

Burton resident Mike Biles has just published his first book. 'A Bit About Britain's History' does exactly what you think it should. It gives a brief account of Britain's amazing story, from a long time ago until quite recently, and is a gentle reminder of what you might have learned at school, if only you'd been paying attention. Or perhaps you're coming to the subject fresh and want to understand a little of how we ended up like this. It is quite a tale, from man's first footsteps across a land that is now under the sea, to the digital age. Told through a few dozen short articles, A Bit About Britain's History explains the essentials of every period, including how the ancestors of the British arrived, how they fought each other, formed nations, fell out over religion, acquired a large empire, made things, became gradually more democratic, helped win a couple of world wars and were left wondering what to do next.

Included at the end of the book are detailed timelines, which provide useful reference for all the important (and a few not so important) dates and events, and which also make fascinating reading in their own right.

A Bit About Britain's History is a product of the astonishingly wonderful website, A Bit About Britain, and is available for a very reasonable price from Amazon, in paperback or as an e-book. It might be the only book on British history you'll ever need; or it might not.

From our literate correspondent



GARDEN SHARING...

At a recent meeting of the PALS, it was reported that several people have expressed an interest in the concept of sharing a large garden that is too much to manage, with a neighbour who has little or no garden, but would welcome the prospect of having their own space to cultivate. Having the resource and ability to grow our own produce is becoming increasingly popular nationally, with the waiting lists for allotments in some places being several years. Alternatively, perhaps we as a village would wish to investigate the possibility of acquiring a possible site for a few allotments?

What do you think? Do you have a large garden that you are finding impossible to keep on top of or conversely are you someone who would love to get to grips with cabbages, onions broad beans etc but don't have the space? Gardening has been shown to have a beneficial effect upon our general wellbeing, fitness and mental health and is free!

If you have any thoughts on this please do get in touch with us, we would love to hear from you.

Marilyn & Sue

PALS

sandgrowngirl53@gmail.com

VILLAGE SPORTS DAY & FUN RUN

Get your running shoes on (or walking boots!) and join in the Village Sports Day & Fun Run on Sat September 28th (Registration 1.15-1.50pm, Fun Run 2pm, Sports 2.45-4.45pm). There's lots to join in, including the 3km fun run itself (with a shorter option for toddlers escorted by a parent), as well as orienteering, kwik cricket, 5-a-side, archery, tug of war, boules and more. It's also planned to have Pilates and Nordic walking demonstrations, and for those who join in the Fun run a free post-race massage is available.

Entry fee is £3pp, funds going to the sports pavilion. Refreshments will be on sale on the day, and everyone who takes part receives a medal.

Entry forms are now available at the village shop, or at the pavilion at the weekly Run in the Park sessions on Saturday mornings.



SAT SEPT 28 BURTON IN LONSDALE VILLAGE SPORTS & 3KM FUN RUN

ENTRY FEE: £3PP, FAMILY OF 4: £10
REGISTRATION 1.15-1.50PM. WARM UP: 1.50-2PM

Have fun completing our grass track 3km Fun Run, with a 1.5km option for walkers/toddlers. Medals for all. Then enjoy an afternoon of sports taster sessions, for young and old: Entry forms: blparishcouncil@btinternet.com. Enquiries: 07843 187744.



Bentham Beagles Running Club

Walk, jog or run your way around the 3km grass course! Start: 2pm.

Followed by an exciting programme of sports (2.45-4.30pm)

Archery; Boccin; Tug o' War; Nordic Walking demo; Pilates; Relays; Orienteering; Kwik Cricket

Free post-run massage!

Coffee shop; cakes; ices

A Burton-in-Lonsdale Parish Council event

ANNUAL VILLAGE TREASURE HUNT

The third annual treasure hunt set off from the Punchbowl on a lovely Sunday afternoon, the 8th September at 4pm. Crews were given a map of the local area with 25 points marked. On another sheet were the questions (some cryptic) to be answered at those points, together with the "value" of that point. We had to choose a maximum of 18 points to visit, bearing in mind the location, the value and how difficult the question looked to be.

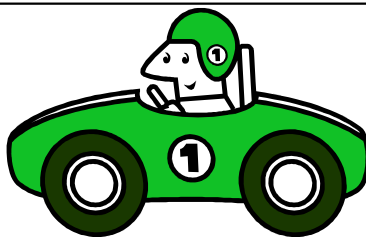
We also had to bring some treasure back, a large leaf (some were well over 2ft across), a conker and a chocolate surprise.

After some three hours, the crews returned to the Punchbowl for the marking and a light supper. There was also a raffle, one of the prizes being the chocolate surprises!

The winners were "Detached from the Car" who got a voucher for a meal at the Punchbowl, the second prize was chocolates.

It was a very successful event, 10 cars containing 35 people enjoyed it, and the surplus was split between **Prostate Cancer UK & Breast Cancer NOW**, £75 each. A good result.

Thanks must go to Shaun, Clare & Rachael Wilson for organising a brilliant event and the Punchbowl for hosting it.



FLU VACCINATIONS - 2019

Starting 9th October 2019

BENTHAM SURGERY

There will be two Saturday morning clinics between 9.00am and 12.00 noon on 12th and 19th October. No appointment necessary, just turn up and check in at reception.

There will also be evening clinics on 9th 16th 23rd and 30th October at Bentham **By appointment only.**

INGLETON SURGERY

Mondays, Tuesdays and Thursdays from 14th October for 4 weeks. 10.00am to 12.00 No appointment necessary. Just turn up and check in at reception.

Following instructions from NHS England and as in recent years we will be offering two types of flu vaccination this year. One vaccination is specifically for all patients aged 65 and over. The other is for 'at risk' patients under 65. At Risk groups include patients with the following conditions.

Heart Disease	Diabetes
COPD	Chronic Kidney Disease
Asthma (on daily treatment)	Chronic liver Disease
Obesity	Plus Pregnant Women

Plus at risk children and all children born between 1/9/2015 and 31/8/2017

If you are unsure whether you are entitled to have a flu vaccination please phone the surgery on Bentham **015242 61202**

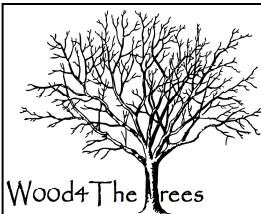


If you miss your vaccination please inform reception.

You can have your vaccination any time over the winter period but the sooner the better.



Before you criticize someone, you should walk a mile in their shoes. That way, when you criticize them, you're a mile away and you have their shoes.



Wood+The Trees

Sam Watson
Bentham
015242 37728
07789 901329

Tree Care and Forestry. Felling,
Thinning, Reductions, Stump Grinding,
Pruning, Hedging and Hedge Laying.

LUNESDALE SURGERY

FLU CLINICS 2019

Saturday 28th September : 9.00 — 11.30am at Lunesdale Surgery
FOR PATIENTS AGED 65 AND OVER, OR IN AN AT RISK GROUP plus PATIENTS WHO WILL BE 65 BEFORE 31/03/2020
BOOK IN ON THE MORNING BEFORE YOU HAVE YOUR VACCINE

Monday 14th October : 6.00pm — 7.30pm at Lunesdale Surgery
ONLY FOR patients under 65 in an AT RISK group — To book in advance

Friday 25th October : 9.00am — 11.30am at **HORNBY INSTITUTE**



Ofsted rated us Outstanding in all areas
Open 7.30am – 6.30pm

- 30 hours free childcare for eligible 3 & 4 year olds.
- 15 hours free childcare for eligible 2 year olds.
- Modern facilities and a friendly traditional atmosphere.
- Flexible opening hours to cater for most needs
- Dedicated Baby facilities.
- Holiday club available during all school holidays.

**1 Station Road
HORNBY**

T: 015242 22288

E: info@hornbydaynursery.co.uk

Call or email the nursery to discuss your individual needs or to arrange a visit.

All Saints' Church News

Sunday Services in October and November

Oct 6th 8 am (Holy Communion) and 11 am (Harvest Festival and Harvest Lunch)

Oct 13th 11 am (Holy Communion)

Oct 20th 8 am (Holy Communion), 11 am (Morning Worship)

Oct 27th 11 am (Holy Communion)

Nov 3rd 8 am (Holy Communion) and 11 am (Morning Prayer and Dedication of the New Book of Remembrance to be lodged in the stand from Ben-tham

St Margaret's)

Nov 10th 10.50 am Village Remembrance Service

Nov 17th 8 am (Holy Communion) and 11 am (Morning Worship)

Nov 24th 11 am (Holy Communion)

Other Services and Events in October and November

All our services are open to everyone in the parish and we would love to see you either at a service or to join us for coffee after the Sunday morning service at 12 noon.

Stay and Play, our group for pre-school children (with parent or guardian) meets on Thursdays in the Church Room from 10 am until about 12 noon. New families are always very welcome. There are toys and other things to entertain the children and tea, coffee and chat for the adults. For further information e-mail allsaintscw@gmail.com

Each Friday morning we normally meet at 10 am in the Church Vestry for a short simple time of **Prayers for the Parish**. Do feel free to join us for about 30 minutes.

Advent Fair, Saturday 23rd November. Our Annual Advent Fair will be held in the Village Hall and all are invited. Refreshments, raffles, stalls and chatter! A morning for all to enjoy.

November 30/December 1st Nativity Crib festival weekend. A new event for the village calendar – Watch out for posters around the village as details are finalised.

Catherine and Christine, Church Wardens at All Saints

And from Vicar Denis.....

Well summer seems over now, though how do we know with the weather we've been having! As we move into autumn it's the beginning of a busy time for the church. Harvest followed a few weeks later with our remembrance services and followed soon after with the Christmas season – the season which tells the story of the birth of Jesus, the friend and saviour of all. Our harvest season has already begun as we have had the first village celebration and thanks for our farmers and food with the Methodist Service in September. Continued across.....

The last one in the current Methodist building. All Saints harvest service will be on Sunday the 6th October where will celebrate God's goodness to us and to pray for those who work hard during the year to keep us fed and watered. In our village community there are many who support us. Those who 'plough the fields and scatter' – our farmers and those who work alongside them and our local shop which serves our community well. Join us to give thanks for these. The first Sunday of every month we hold our family service which is more accessible for our younger members. So, join us on the 6th October at 11am. We decorate the church with food stuffs to give thanks and we welcome your donations. These are shared with the Hospice in Lancaster after the service.

Our remembrance service will be held 10th November. All are welcome to join us as we remember those who made the supreme sacrifice. The service starts on the village green at ten to eleven for the 2 minutes silence. We will be especially remembering Brian Woolnough, a fond member of our community who passed away this year.

We start our Christmas season the first weekend of December (Saturday 30th November and Sunday 1st December from 10am to 4pm) with a Nativity Weekend Festival. We will have nativity displays and activities for children. We have some nativity sets but are asking if anyone in the village has a set they can lend us for the weekend. We will take very good care of them and the church will be manned during the weekend. If you can help please contact Rev Denis on 01524261579).

However, through the busyness of the next few months it is important that we keep our eyes on Jesus the reason for the seasons. We in the church are here to serve our community and if you have any needs that we can help you with, please get in touch.

Concert&Cakes

Saturday 19th October – the Larisa Trio (piano, violin & cello)

We are in for a treat at the opening concert for the 2019/2020 Concert&Cakes season as we welcome the winners of the 2019 Christopher Rowland RNCM Chamber Ensemble of the Year. That long title, given that the RNCM is the leading conservatoire for teaching chamber music – means that in effect we will be hearing the best young chamber musicians in the UK. The Larisa Trio will be playing music by Haydn, Debussy and Gershwin.

Regulars at these concerts already know that we hear fabulously talented and enthusiastic musicians at the start of what can go on to be an international career. We recommend that you catch up with cellist Abel Selaocoe who is giving a solo performance for Skipton Music on 1st October or his band Kabantu as they give a special performance for the under 5s at the Nuffield Theatre, Lancaster University, on Saturday 23rd November.

The most important thing is that we want to see you on the day – that's why we don't sell tickets and only ask for donations at the end. At the same time, these concerts can only happen because we have so many fantastic helpers, both in front and behind the scenes. If you could bake a cake, or help on the day, please let us know by speaking to Cathy Rowland or emailing concertandcakes@outlook.com.

See you in October.

Christine, Cathy and Steve

concertandcakes@outlook.com



Rachel & Ali @ THE BARBER SHOP

3 Station Road, High Bentham

Monday 9.00 till 5.00
Tuesday 9.00 till 5.00
Wednesday 9.00 till 5.00.
Thursday* 9.00 till 12.00
& 4.30 till 9.00pm
Friday 9.00 till 5.00
Saturday 8.30 till 12.00

*Appointments available Thursday mornings

Alison
07761 725744

Rachel
07851 464433



MARK WATSON

HOME & GARDEN MAINTENANCE

Digging, fencing, hedge trimming, mowing, paving, planting, power washing, rockeries, rotavating, seeding, spraying, strimming, turfing.

07759680938

07759680943

Low Bentham
015242 62038

Demolition, dry lining (plaster boarding), insulating lofts, pointing, rendering,

No job too small, reasonable rates, estimates given.

Ashfield House Dental Practice

Mark Jonathan White BMSc (hons), BDS (hons)

A warm welcome awaits you.

Call in and ask us for more information about: Family dentistry, Orthodontics, Replacement of Missing teeth, Dental Implants, Cosmetic Dentistry, Tooth whitening, Orthopaedic jaw and bite problems.

Opening Hours:

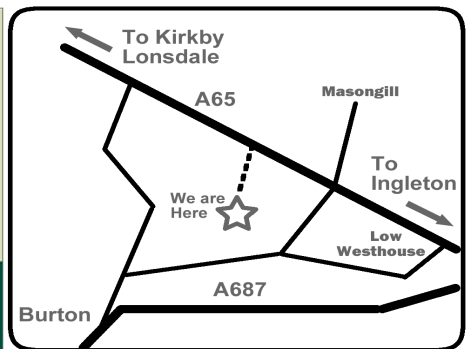
Monday, Tuesday & Wednesday: 9am to 5pm
Thursday (late night opening): 5:30pm to 9:30pm

66 Main Street, High Bentham
Tel: 015242 64813

Chalybeate Kennels & Cattery



Pet Food & Supplies
015242 41120



BRAND NEW HEATED KENNELS HEATED CATTERY

- ALL IN A LOVELY COUNTRY SETTING
COMPLETELY REFURBISHED SHOP
SELLING ALL PET FOOD & ANIMAL SUPPLIES
DROP IN, OR TELEPHONE RACHEL OR CHRIS

Onward and Upward

From our political correspondent

Well, what a pickle we're in now. We can't be sure who'll be Prime Minister next week let alone by the end of the year. One thing is certain, whichever of the two current alternatives we get lumbered with we shall be the laughing stock of such African countries as Chad and Mali amongst others. If only we had taken my advice, offered in these pages a number of years ago and declared Burton a republic independent of the rest of the UK. Unfortunately that ship has sailed, in the interim the intended president has passed away. He, or she, was found prostate on the ground several years ago and despite the best efforts of paramedics he/she expired, apparently NHS training didn't cover how to use a defibrillator on a goldfish.

However, it's not too late to declare ourselves an independent state with our own democratically elected government. That would mean that our votes could have some relevance. Ever since Adam was a boy it hasn't mattered which party you voted for, in either district, county or national elections a conservative has been returned, and look where that's got us! So I suggest a new sort of government. No party names and we would elect a Prime Minister to serve for a year, we would also elect a cabinet for eighteen months and thereafter for a period of twelve months. That way there would always be an overlap of six months between PM and the rest of the cabinet. Voting would be on the spring and autumn equinoxes and it would be compulsory. A failure to vote would be punishable by being locked in a room for a day with the village bore, a government appointee.

Any doubts about our ability to muster a competent cabinet are quickly dispelled by a quick look around at the local populace. We have teachers, academics, accountants, solicitors, retail specialists, foreign language speakers coach drivers and more doctors and nurses than you can shake stick at. So that's education, economy, attorney general, foreign secretary, transport and health taken care of.

Our economy would be based on the breeding and export of dogs, we seem to have more dogs than humans in the village so we have a good foundation on which to build.

The question is, 'do we have a Parish Council with the courage to grasp the nettle?'



**Date for Next Year's Diary
Street Party
May 8th
Keep Watching for
More Info**



The Bentham Line

Mondays to Saturdays

	SO	SX								
Bentham	0601	0603	0842	0935	1136	1337	1538	1848	1849	2040
Wennington	0606	0608	0848	0940	1142	1343	1543	1853	1855	2046
Lancaster	0632	0632	0913	1005	1210	1410	1608	1919	1925	2114

Sundays

Bentham	0954	1140	1440	1640	1840
Wennington	0959	1145	1445	1645	1845
Lancaster	1025	1213	1513	1715	1913

Mondays to Saturdays

Lancaster	0648	0941	1046	1245	1447	1745	2030	2130
Wennington	0713	1004	1109	1308	1510	1809	2054	2157
Bentham	0719	1010	1115	1314	1516	1815	2100	2202

Sundays

Lancaster	1041	1239	1541	1741	1951
Wennington	1105	1305	1605	1805	2015
Bentham	1111	1311	1611	1811	2021

USEFUL WEBSITES

Rural Bulletin

www.rsonline.org.uk/

Craven District Council

www.cravendc.gov.uk/community-living/get-involved/community-news-newsletter/

Northern Gas Networks

<https://ngnceg.co.uk/>

Allerton Waste Recovery Park

<https://wasteservices.amey.co.uk/where-we-work/north-yorkshire/>

Community First Yorkshire

<https://mycommunity.org.uk/>

BUS TIMETABLE

Service 80 81

Lancaster	<i>Bus Station</i>	10:15	12:15	14:15	17:15
Hornby	<i>Wenning Stores</i>	10:41	12:41	14:41	17:41
Bentham	<i>Con. Club</i>	11:02	13:02	15:02	18:02
Burton	<i>High Street</i>	11:11	13:11	15:11	18:11
Ingleton	<i>Comm Centre</i>	11:21	13:21	15:21	18:21
not Sat					
Ingleton	<i>Comm Centre</i>	07:00	09:00	11:25	13:25
Burton	<i>High Street</i>	07:09	09:09	11:34	13:34
Bentham	<i>Con. Club</i>	07:18	09:18	11:43	13:43
Hornby	<i>Institute</i>	07:37	09:37	12:02	14:02
Lancaster	<i>Bus Station</i>	08:12	10:05	12:30	14:30
not Sat					

Monday to Saturday (excluding public holidays)



Valerie Hinde

Chartered architect and designer

Domestic extensions

Refurbishments

Conservation

Listed buildings

Planning Applications

Building regulations

Community

Commercial

49 Robin Lane, Bentham, LA2 7AG

Tel 07503 731818

015242 61407

valeriehinde@gmail.com

www.valerie-hinde.co.uk



**Bed & Breakfast
Burton-in-Lonsdale
En-suite Double or
Twin Rooms**

Peaceful location

**Tel:- 015242 64897
or 07803-129067**



Telephone: 015242 - 61557

**W. H. HAMBLING
PAINTER & DECORATOR**



GRETA BANK
BARNOLDSWICK LANE
BURTON-IN-LONSDALE
CARNFORTH
LANCASHIRE
LA6 3LZ

H & M

CRAFTSMEN

KITCHENS | BEDROOMS | COOKSHOP



Open 6 Days | Ample Parking

Ingleton | North Yorks | LA6 3NU

015242 41535

kitchensandbedrooms.co.uk



Healthy Pet Club

PUPPY & KITTEN PLANS



01729 823538

www.daleheadvetgroup.co.uk

The Childrens' Flowerbed UPDATE

Dear Burtonians,

For those who missed the article on this earlier in the year, The Children's Flowerbed is a 'work in progress' on the south side of the All Saints graveyard. It is to be a circular, seasonal flowerbed of simple white bulbs designed to come up each springtime and bring joy. It is being planted as a peacefilled and celebratory reminder of all children that have been lost by miscarriage, stillbirth or for any other reason (and of any age) whom we don't often talk about but never, ever forget. It is also being planted to remember the multitudes of innocent children lost through war and natural disaster. This is their memorial. It is placed where it is in the graveyard because, behind it by the wall, are buried generations of stillborn Burton children in unmarked graves. We hope to have a plaque soon to commemorate these children too.

The Flowerbed was begun in the Spring of 2019. Many villagers donated snowdrops from their gardens (thank you again!) which have already been planted. Still to go in are white crocus, narcissi and tulips which couldn't be ordered until this Summer.

Most of the new bulbs have now arrived and the rest should arrive soon! So a provisional planting date has been set for Sat 12 October at 10am (weather permitting). Please contact me if you would like to help with the planting on 015242 62 452 or by email me at

catherine.c.r.rowland@btinternet.com

If you would like to donate towards the cost of the bulbs in memory of a beloved lost child, then that would be most welcome too. Please give any donations to Cathy Rowland, Pye Cottage, 19 Low St, BiL or to either of the All Saints Churchwardens, Christine Whitfield or Cathy Birtwistle via the shop or church.

This is a flowerbed for everyone... and thank you so much to everyone who has helped with the project so far. Only next Spring will all be revealed !!!

Cathy Rowland & All Saints church

Ewecross Historical Society

Meetings are held in the Methodist Church, High Bentham at 7.30 p.m. This is about 200 yards down Station Road from the Town Hall.

Monday 30 September and Monday 28 October see website at

<https://ewecrosshistoricalsociety.wordpress.com/events-programme/>

for programme. Subscriptions due. Visitors welcome

Ingleborough Archaeology Group

Meetings are held in Ingleton Community Centre at 7.30 pm

Monday 16th September Dan Elsworth, from Greenlane Archaeology - The Excavations behind Skipton Town Hall.

Monday 21st October

John Cockshott The Origins of Roman Ilkley The short AGM will be held immediately beforehand. Visitors welcome.

Village Hall

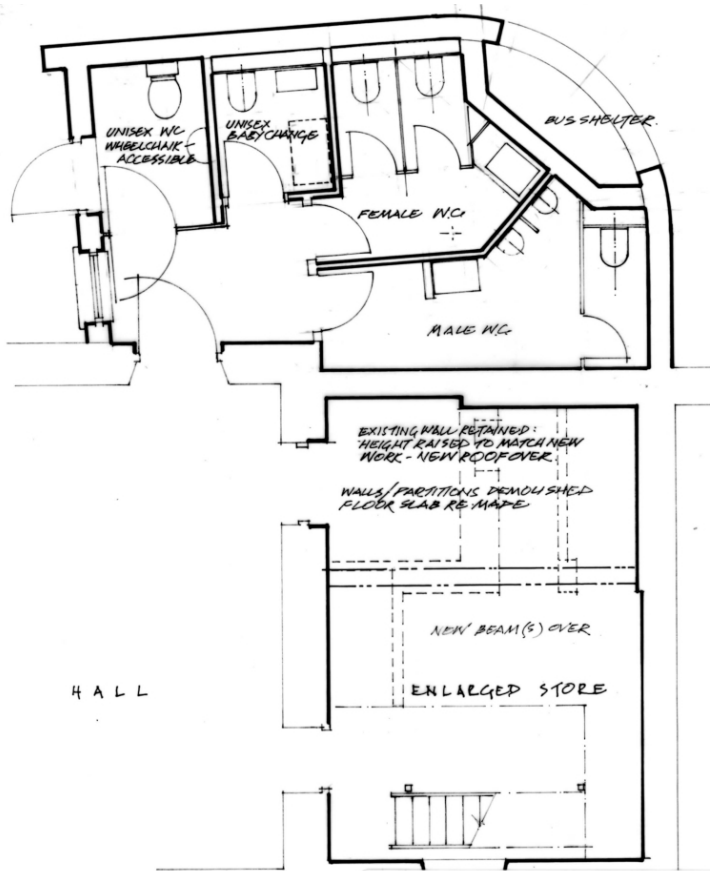
Work on the plans for the Hall extension have come to the point where we have agreed on the design and now looking to go forward to the planning stage.

A new lighting system has been installed in the hall, with dimmer switches, we hope you like them.

There have been recent problems with the smoke alarms and new ones have been ordered.

We have noticed that some of the chairs need to be cleaned and we will do this asap.

Andy



Give a man a fish and he will eat for a day. Teach him how to fish, and he will sit in a boat and drink beer all day.

If you lend someone \$20.00 and never see that person again, it was probably well worth it.

WILL HAMBLING

BURTON IN LONSDALE

PAINTING & DECORATING
INTERIOR & EXTERIOR

07858 572 336

015242 80112

WILL.HAMBLING@SKY.COM



J. LAWSON

ELECTRICAL CONTRACTOR

14 MANOR CLOSE 07786 222566

BURTON IN LONSDALE 015242 62916

LA6 3NE

jlawsonelectrical@gmail.com



USE YOUR POST OFFICE

Burton Community Shop
High Street

**Five mornings a week
9am to 1pm
(No afternoon service)**

*Visit Carolyn or Julie or June and
discuss your requirements
or ring **63397** for information*

YOUR Post Office provides:

- **FREE** payment of utility, council tax and other bills with instant receipt
- Draw cash from **ALL** high street bank & building society accounts
- Buy & sell foreign currency and travel insurance at competitive rates



VISIT OUR FABULOUS CHRISTMAS CABIN

Opens October 1st 2019

**A winter wonderland full of trees,
lighting, amazing decorations and
baubles. Something for everyone.**

A65 at Ingleton, LA6 3PE
OPEN 7 DAYS A WEEK

**Please do patronise our
advertisers, they keep the
magazine going.
And if you know of anybody
who might like to advertise
in the Burtonian, please get
in touch.**

Open

Wednesday & Thursday 5-11pm

Friday & Saturday 4 - 11pm

Sunday 12noon - 11pm

Food Served

Wednesday & Thursday 5.30pm – 8pm

Friday & Saturday 5.30pm – 8.30pm

Traditional Sunday Roast from 1pm-5pm



www.punch-bowl.co.uk

Good Food, Real Ale, Beer Garden, All Welcome

Please follow us on facebook for any upcoming events !

9 Low Street, Burton-In-Lonsdale, LA6 3LF

015242 61298