

# The **Burtonian**

Burton in Lonsdale  
Village Newsletter

*Number 121 April 2024*

*50p - free to Residents*



## Village Diary

|           |          |          |   |                            |
|-----------|----------|----------|---|----------------------------|
| 04 Apr    | Thursday | 14:00    | Friendship Group  | Church Room                |
| 05 Apr    | Friday   | 10:00    | Coffee & Chat   | Village Hall               |
| 06 Apr    | Saturday | 19:30    | Film Night - <i>Barbie</i>  | Village Hall               |
| 20 Apr    | Saturday | 10-12.00 | Book Café   | Village Hall               |
| 25 Apr    | Thursday | 14:30    | Ceilidh Club -  | Village Hall               |
| 27 Apr    | Saturday | 10:00    | Coffee morning to raise funds<br>for the repair of the<br>Lychgate. | The Cross (3, High Street) |
| 27 Apr    | Saturday | 20.00    | Chris Bannister Concert   | Village Hall               |
| 4 May     | Saturday | 19.30    | Film Night <i>Indiana Jones<br/>and the Dial of Destiny</i>         |                            |
| 31 May    | Friday   |          | Boon Day  | Church                     |
| 25/26 May |          |          | Vera Dodgson Exhibition   | Church                     |
| 1 June    | Saturday |          | Boon Day  | Church                     |
| 30 May    | Thursday | 14.30    | Ceilidh Club  | Village Hall               |

The Bridge Club Meets every Monday evening at 6.45 for 7.00pm, in the Pavilion.

Frontispiece : Jane Burns' Glorious Daffodils

Editors: David & Cecile Gillibrand burton.news@gmail.com  
 Next Copy Date: 15th June 2024.  
 ( please use *word* and/or *jpeg* formats, not *pdf*)

## The Lychgate.

*Chris Whitfield and Anne Heinrich*

We are delighted to let you all know that we now have permission to repair the Lychgate, and now need to raise the necessary funds. There is a box in the shop for your cash donations, and on **Saturday April 27<sup>th</sup> from 10am until 12 noon**, there will be a Coffee Morning at The Cross (3, High Street) to carry on fundraising. We also now have permission to undertake work on the north side of the church, installing handrails to the Emergency Steps and putting in a new soakaway to improve the area around the steps. Look out for the work being done!

## Exhibition at All Saints Church Vera Dodgson late of Selber Foot and Gallaber Farm

Bank Holiday Weekend **25/26 May 2024**

Vera recently past away at the age of 98. All her life, she was very creative and left a vast amount of beautiful needlework and paintings which the family would like to showcase and an opportunity for visitors to buy a piece of her work if desired. The money raised from this exhibition will be donated to both the Church for the window fund and The Ingleborough Nursing home where she spent her final days.

## Boon Days, All Saints Churchyards

Boon Days are planned for **Friday 31<sup>st</sup> May and Saturday 1 June**. Can you spend some time helping to keep the church grounds beautiful for visitors and wildlife? The grounds are open to all and are often used as a picnic or resting spot for walkers passing through the village as well as a place of remembrance for those whose loved ones, of all denominations, rest in these grounds.

There are some local people who have been kind enough to Adopt a Grave and keep a watchful eye on graves with no one to care for them and help to keep them tidy. We would like to extend this scheme to the Very Old and Separate Church Yard. Will you volunteer a few minutes every so often to check the state of a grave?

Contact any of the church PCC or email [allsaintscw@gmail.com](mailto:allsaintscw@gmail.com)

## FILM CLUB - UPDATE

The April film will be **Barbie**, which will be shown at 7.30 in the village hall on Saturday 6th

The May film will be **Indiana Jones & The Dial of Destiny**, which will be shown on Saturday May 4th



Imagine walking up Chapel Hill and seeing swathes of brightly coloured sunflowers blowing gently in the breeze on the old graveyard. Picture the flowers' friendly faces bobbing at

you over the churchyard wall as you stroll along Leeming Lane. If the idea makes you smile, think how happy it could also make birds, bees and other things.

Want to join in? Collect your free seeds from the shop. Take a note of the size the seedlings grow to (very important!). Sit down with your kids, grandkids and plant the seeds in pots - or do it yourself just because it's **a Nice Thing To Do**. Lovingly care for the seedlings and bring them to the churchyards on Saturday 15 June, where they can be planted out in groups in specially allocated spots. Come back every now and again to see how your sunflowers are doing. Give them some TLC. When no one's looking, talk to them if you like. Then come back in the summer when they're all blooming brilliant, take photographs, and share them on Facebook, X, WhatsApp and all that social media stuff.

This potentially wonderful project is a Parish Council/Parochial Church Council Liaison Group Pals with Trowels production, with support from the Shop, Burtonian and others working together. Please be a part of it – and keep your eyes posted for more information about 15 June nearer the time.  
Mike Biles

**H & M**  
CRAFTSMEN  
KITCHENS | BEDROOMS | STUDIES

Full design and fitting service  
Showroom Open:  
Mon-Fri 9am-5pm | Sat 10am-1pm

Ingleton | North Yorks | LA6 3NU  
015242 41535  
kitchensandbedrooms.co.uk

**Dalehead**  
Veterinary Group Ltd

Healthy Pet Club  
PUPPY & KITTEN PLANS

01729 823538  
www.daleheadvetgroup.co.uk

## LAST THURSDAY CEILIDH CLUB *Gwenda Meredith*

The Last Thursday Ceilidh Club, founded by Tim and Janine Fearon had its inaugural session on Thursday February 29<sup>th</sup>!

As we had no idea who would come, I went with my fiddle looking forward to at least having a few hours of jolly tunes, even if there might not be any dancers!

How delightful to see the Sports Pavilion already buzzing with folk; musicians, callers, dancers. The cheery welcome over, a caller went through the steps of the first dance. Being such lovely people, despite the numbers in the room, no-one trod on anyone else's toes and when the caller could see that everyone looked comfortable, walking the steps—the music started up. Smiles all round.

The ceilidh is a particularly Celtic gathering – for the evenings before radio and TV, recorded music on wax cylinders, 78 records and the gradual changes in the twentieth and 21<sup>st</sup> century to instant listening, instant entertainment .

The gathering of people for a wedding or other celebratory occasion came from Scotland and Ireland. The dance movements were “called” and demonstrated for all, and whatever music was available brought the dance alive. In the 19<sup>th</sup> century there were not always instrumentalists-but there was always someone musical who could “lilt” the tune .

The Quakers and Methodists in the 1800s encouraged literacy and music - the Winder family from nearby Wyresdale, was particularly musical. Their dancing tunes are still played today.

There are also Yorkshire and Cumbrian manuscripts which have been revived with the dance traditions, particular to the area. Some of the folk who came to the February Ceilidh club, know a lot about their area's tunes and traditional dances. I look forward to playing for new dances which many varied and experienced callers can bring to share here at [Burton's Last Thursday Ceilidh Club](#).

**Next Ceilidh—March 28<sup>th</sup> will be in The Village Hall from 2.30 to 4.30 and then the following meet will be April 25<sup>th</sup> open to all enthusiastic dancers and musicians of all abilities. Happy dancing guaranteed!**

**SAVE THE DATE!! SUNDAY 23rd JUNE**

**Village Sports and Duck Race**

**SAVE ANOTHER DATE**

**for Stay & Play.**

Our Stay & Play group is celebrating its 10<sup>th</sup> Anniversary this year! There will be a party at the end of August for all the children who have been part of this group, which began as the village school closed in 2014. More details in the next copy of the Burtonian

## Elections (no, not that one!)

*Susan Gregory*

In case you've missed publicity about elections because you're living in a cave without tv or wi-fi, registering to vote is one of those necessary admin jobs you've been meaning to get round to, but haven't yet quite managed. And vital to maintain democracy aka the least worst form of government.

The election for the first York and North Yorkshire Mayor: Thursday 2 May 2024

NB: The next full council elections will take place in May 2027.

No inside information yet re the General Election date!

However, you need to register to vote in an election and (just to make life interesting) have a form of ID to take with you to the Polling Station.

Here's a run-down: **Voter registration**

<https://www.northyorks.gov.uk/your-council/elections-and-voting/york-and-north-yorkshire-combined-authority-mayoral-election>

Deadline to register to vote for elections on Thursday 2 May: Tuesday 16 April.

Not already registered to vote? You have until midnight on Tuesday 16 April to vote in this election. Visit: [www.gov.uk/register-to-vote](http://www.gov.uk/register-to-vote)

To vote by post or by postal proxy, you have until 5pm on Wednesday 17 April to apply. Visit: [www.northyorks.gov.uk/your-council/elections-and-voting/apply-postal-vote](http://www.northyorks.gov.uk/your-council/elections-and-voting/apply-postal-vote)

Unable to vote in person or by post? You have until 5pm on Wednesday 24 April to apply. Visit: [www.northyorks.gov.uk/yourcouncil/elections-and-voting/apply-proxy-vote](http://www.northyorks.gov.uk/yourcouncil/elections-and-voting/apply-proxy-vote)

You only need to register once - you do not need to register separately for every election. You must register again if you've changed address, name or nationality.

Need help? Get in touch with your local electoral registration team. They can tell you if you're on the electoral register, or if you've registered for a postal or proxy vote.

*The Electoral Registration Officer, North Yorkshire Council  
Civic Centre, Stone Cross, Rotary Way, Northallerton, DL6 2UU*

Website: <https://www.northyorks.gov.uk/>

Telephone: 0300 1312 131

Email: [elections@northyorks.gov.uk](mailto:elections@northyorks.gov.uk)

HM Government Guide:

<https://www.gov.uk/government/publications/registering-to-vote-easy-read-guide>

Paper registration form:

<https://www.gov.uk/government/publications/register-to-vote-if-youre-living-in-the-uk>

<https://www.electoralcommission.org.uk/voting-and-elections>

**Voter ID** (stay awake!!)

.... Continued on p.16

OGLETHORPE  
STURTON &  
GILLIBRAND



Friendly, professional legal advice

Individuals | business | agriculture

Call us today: 01524 846 846

LANCASTER | KIRKBY LONSDALE

[www.osg.co.uk](http://www.osg.co.uk)



**Ofsted rated us Outstanding in all areas**

**Open 7.30am – 6.30pm**

- 30 hours free childcare for eligible 3 & 4 year olds.
- 15 hours free childcare for eligible 2 year olds.
- Modern facilities and a friendly traditional atmosphere.
- Flexible opening hours to cater for most needs
- Dedicated Baby facilities.
- Holiday club available during all school holidays.

**1 Station Road**



**Janette Street -  
Psychotherapist and Counsellor  
Qualified in  
Person Centred Counselling / PGDip  
BA Hons**

I have experience working with adults, adolescents and families with a range of presenting concerns including

- Anxiety
- Depression/Low Mood
- Autism
- Grief and Loss
- Relationships

Email: [Janette.therapy67@gmail.com](mailto:Janette.therapy67@gmail.com)

Text: 07598758374

Website: [www.janetestreet.co.uk](http://www.janetestreet.co.uk)

BACP Registered Practitioner.



**USE YOUR  
POST OFFICE**

Burton Community Shop  
High Street

**Usual Service Now Resumed  
We are open every Weekday  
9am to 1pm**

*Do visit us and  
discuss your requirements  
or ring 63397 for information*

**YOUR Post Office provides:**

- **FREE** payment of utility, council tax and other bills with instant receipt
- **Draw cash from ALL** high street bank & building society accounts
- **Buy & sell foreign currency and travel insurance at competitive rates**





## NEWS FROM THE SCHOOLS

### Melling St Wilfrid CE Primary School



We have only been back in school 3 weeks since our half term break but already so much has happened. You may have noticed work to the outside of the school this half term. The playground has been resurfaced.

We have had a new climbing frame and slide installed for younger children and a role play shelter put in. The pathways are being renovated and as always the playground area is open to local children.

Our play area is well used and popular with the community but unfortunately recently we have experienced vandalism from some users of the play area. Please let us know if you see people abusing the play area as we want to keep it well maintained for all the local children to enjoy.

As part of their learning in science, our Infant class enjoyed a visit to Dalton Zoo where they got to be zookeepers for the day. They fed giraffes, red pandas, lemurs and monkeys and watched feeding time for the tigers and wolves. They learned so much- thank you Dalton Zoo.



This week we took part in World Book Day and the children came to school dressed as their favourite character. We had some very creative costuming- see if you can guess the Characters on the photo.







## Tatham Fells CE (VC) Primary news

'Roots to Grow, Wings to fly, Faith to flourish'

We had a very busy Thursday this week. Everyone, including teachers was dressed as their favourite book character for book week and then in the afternoon we opened our doors for all the parents in a mothers day celebration.

We had a wide range of interesting Characters for World Book Day and every child got to talk about, write about and draw their character for our entrance display. Thanks to all the parents for making it possible.

The afternoons Mother's day celebration was lovely. The children had all written about their mums explaining why they were special to them and read their letters to them. It was amazing how different they all were and the children were very proud of their hard work.

The previous week at school we had a one day non graded inspection. The children loved talking to our inspectors who could not believe how polite, well behaved and articulate they were. They loved our setting and curriculum and it was such a positive experience that children cried that they weren't coming back the next day (the teachers were glad they were not back on day 2!)

We offer free Nursery places for all 3 and 4 year olds all day on Thursdays and Fridays from 8:20am to 3pm. Please email [bursar@tathamfells.lancs.sch.uk](mailto:bursar@tathamfells.lancs.sch.uk) for more details.

Our Little Explorers club on Friday afternoons will continue this term with sessions being held even when the weather is unfavourable as we also have the cabin classroom available. Please see our posters on our face book page Tatham Fells CE-VC Primary School for more details. All toddler and pre-schooler families are welcome.

Visits to school are always welcome, our children love to show what a fantastic school we have in an idyllic location.

Fiona Ip Headteacher



**Alessandra makes .....**

### **Ricotta Gnocchi with sage butter sauce**

Introducing a delightful twist on the traditional gnocchi recipe! These delicious dumplings offer not only a tantalising taste but also a time-saving advantage.

Unlike their classic counterpart, this variation skips the laborious steps of boiling, peeling, and mashing potatoes. The result? A quicker and easier way to enjoy homemade gnocchi without compromising on flavour or texture.

#### **Ingredients**

**For the Gnocci**            200g 00 flour OR strong bread flour; 220g ricotta cheese; 3 egg yolks  
30g Parmesan cheese grated; Good pinch of freshly grated nutmeg  
Good pinch salt & pepper

**For the sauce**            Unsalted butter approx half a packet. (If using salted butter have the cooking water less salted than you normally would, so that the gnocchi do not taste too salty!); Around 10 fresh sage leaves.

#### **Method**

In a bowl add the flour and make a well.

Mix the ricotta and egg yolks together, (not the egg whites.)

Add this to the flour, then add the freshly grated parmesan, nutmeg, salt and pepper and mix all the ingredient together to form a dough. You may want to try the dough to check that there is enough nutmeg flavour to your liking. You want to taste the nutmeg, but not for it to be over powering.

Transfer the dough to a floured counter

- and knead until you have a smooth dough.
- Divide the dough into smaller portions and roll each portion into a long rope, about 1 inch in diameter.
- Cut the rope into bite-sized pieces, each about 1 inch long, to form the gnocchi.
- To create the classic ridges, gently roll each gnocchi piece over a fork, ie with the fork prongs pointing upwards. or you can simply create a dimple by pushing your thumb partially into each gnocchi.
- Bring a large pot of salted water to a boil and add the gnocchi.
- Cook until the gnocchi floats to the surface, then remove with a slotted spoon and add to the pan with the hot sage butter and toss all together for a minute with the heat on.
- Remember to save some of the cooking water in case the gnocchi are too dry when serving.

#### **How to make sage butter**

(Best to make the sauce just before cooking the gnocchi.)

- Heat a saucepan over medium heat and melt the butter until it becomes foamy.
- Add the fresh sage leaves and cook until the milk solids subside and the leaves crisp slightly.
- Swirl the pan until the sauce turns golden in colour but not brown.
- Serve immediately with grated parmesan.

Enjoy your homemade gnocchi!

## Wildflowers at the Bentham Quaker Meeting House

Every year in late May and June there is a beautiful display of wildflowers (mainly yellow Hawkbit and white Oxeye daisies) in the burial ground at the Quaker Meeting House at Calf Cop on Burton Road at Low Bentham (close to Bentham Pottery). It's a hidden secret few people get to see.

Friends would like to encourage anyone interested to pay a visit. The Meeting House is signposted from Burton Road. There is car parking at the top of the drive. No dogs please.

The Meeting House is an attractive 18th Century "Listed" building. If you would like to see inside when you visit we may be able to arrange this. Please telephone John on 07940825626.



## Over 55 and thinking of downsizing in Bentham?

Our vibrant Extra Care scheme, Bowland View, could be the perfect place for you.

### Highlights include:

- On-site café/bistro and hair salon
- Optional 24/7 care service if and when you need it
- Pets welcome to move in too

\*Extra Care is for over 65s, however you may also be eligible if you are aged between 55 and 64 and have a care need. Eligibility criteria, monthly rent up to 75% on shared ownership, core charges and service charges apply.

Arrange a viewing by calling **07753 451 079** or emailing **info.bowlandview@housing21.org.uk**  
**Bowland View** | Scholars Rise | Bentham LA2 7FS

housing21.org.uk    

**Housing21**  
Extra Care Living



**Guide price:**  
**£45,000\*** for a  
**one-bedroom**  
**apartment (25%**  
**share)**



# CONCERT & CAKES

## THANK YOU

A huge thank you to the many wonderful bakers and behind-the-scenes contributors to Concert&Cakes. It really is like a magical jigsaw in which lots of pieces come together to make every concert a success. The musicians are booked months ahead, but a few weeks beforehand, we see posters and flyers appear, all printed in the village. Emails go out and Facebook and Twitter/X posts get shared. A week before, a banner appears on the railings by the Village Hall. Dietary requirements are checked, travel arrangements confirmed and an artists' lunch menu planned.

The day before, a flag is hoisted on the Village Green, freshly laundered table cloths and towels are delivered. Boxes with the mugs and urns arrive and all the chairs and tables, both inside the Parish Room and from inside the church, are set out.

On the day, the church heating is switched on, bunting is set out and beautiful flowers appear for the tables. A stunning array of cakes are baked after a rush of ingredients have been purchased from the shop as well as milk, coffee and tea on the day.

At around 11am the musicians arrive, set up their instruments and start to rehearse. The emergency exit is checked, the urns switched on and tables furnished with sugar and spoons. By 12.30 the musicians are on their way to Pye Cottage to enjoy that carefully prepared lunch. They talk about their studies and learn about Chris Rowland, by whose work these concerts are inspired. On returning at around 1.45 they find programmes together with cakes, and plates ready. The audience is starting to arrive, and we are ready to greet them. Many are keen to find their favourite pews, at the front. Some may need help with a wheel chair or chosen seat. The musicians get changed in the Tower Room as the steady stream of people arrive, many greeting friends, and take a programme to read. We do a sound check for the microphone.

2.30 on the dot, and we're ready to go. 120 people in the audience last month for the Talland String Quartet; we still get people who have never been before. "We live in Casterton! How can we have missed these for more than 10 years? We will be back!"

The music is sublime, stunning, accomplished and the musicians are engaging, and delighted to be here. They are thanked and wished the very best in their future careers.

**SMART SIGNAL**  
Aerial & Satellite Installation & Repair  
Wi-Fi & Home Network  
CCTV Installation

Ben Fawcett  
Frounts Cottage, Duke Street,  
Burton In Lonsdale  
015242 62017 – 07950028622  
smartsignal@outlook.com

**MARK WATSON**  
HOME & GARDEN  
MAINTENANCE

07759680938  
015242 62038



- Raised beds
- Mowing and strimming
- Hedge cutting
- Turfing
- Power washing
- Fencing
- Interior and exterior painting
- Loft insulation
- Gutter clearing



## Concert & Cakes (continued)

There is a bit of a rush for the cakes, but an orderly queue is formed and a donation dish appears – people have given what they feel is right and it's enough. We can keep going. The Parish Room is buzzing with chat, cakes and congratulations. The musicians are outside having their photo taken on Chris Rowland's bench. Fortunately, there are enough cakes left for them when they get back in, and there is time to talk and relax.

The catering team are on overdrive, everyone is served quickly and efficiently. As people start to drift away, the musicians disappear into the Tower Room and begin to pack up. A small army of helpers clear away bits of cake, cups, table cloths and all. The carpet is vacuumed before every chair and table is packed away or put back in its place for Sunday Service. There is usually enough cake left over for that too. Some cake boxes might be left, but everyone knows they'll be safe and they come back for them. A huge mound of table cloths, aprons and towels are removed to be washed.

Mugs, urns, plates, posters and all are packed up into plastic boxes and loaded into a car to be taken for storage until the next concert.

It is 7pm, the musicians have gone and a text arrives to tell us they are safely back in Manchester. Later, the flag and bunting come down. Just the village posters and banner left for collection.

Yes, of course it is all worth it. We plan to be back in October, for the 40<sup>th</sup> Concert&Cakes. We look forward to seeing you there.

Christine, Cathy and Steve

To go on the mailing list, email [concertandcakes@outlook.com](mailto:concertandcakes@outlook.com)

**butler  
interiors**

Designers, suppliers & installers  
of quality German kitchens.

Call in at one of our beautiful showrooms in  
Lower Bentham or Kirkby Lonsdale

Butler Interiors  
Low Mills  
Mill Lane  
Low Bentham  
Lancaster  
LA2 7FL

015242 63388

Butler Interiors  
Lane House Business Park  
Kendal Road  
Kirkby Lonsdale  
Cumbria  
LA6 2HH

015242 37747

[www.butlerinteriors.co.uk](http://www.butlerinteriors.co.uk)

***B&W Funerals***

*(Brown & Whittaker)*

***James G Macdonald & Tara Wilson***

24 Hour Service

Private Chapel of Rest



Ingleton, Burton, Bentham, Austwick, Clapham,  
Settle, Wray, Homby, Caton, Kirkby Lonsdale  
& all the surrounding areas

*We offer our own Funeral Plans on request*

6 Chapel Lane, Ingleton, Camforth LA6 3FX

[jmfunerals@gmail.com](mailto:jmfunerals@gmail.com)

Tel: 015242 41293

Mob: 07758002260 or 07912 568672 (Tara)

Find us on Facebook



## THE PUNCH BOWL COMMUNITY INN

Many people in the village and the wider community will be aware that the Punch Bowl Inn is up for sale and work is going on behind the scenes to put together a bid to buy it, for the community, to be run for the benefit of the community. We have recently emailed the latest update to all those who asked to be kept informed of the ongoing work to enable the Punch Bowl to be owned by the community. For those of you whom this has passed by, here is the story to date (briefly):-

- Two hugely successful public meetings held in mid February, indicated there was enough support to go ahead with this campaign.
- In depth community surveys were delivered to each household, 62% of which have been returned – this is a fantastic response.
- As a result, we now have an amazing team of talented volunteers working alongside the management committee – we cannot thank them enough.
- Feedback as to how the Punch Bowl could serve the community has been extensive and varied.
- Local businesses, holiday accommodation and local village groups have all been approached to provide letters of support for the bid (this is a vital component of the grant application) together with our MP and NYCC councillors.
- Our story has been featured in the Craven Herald and the Yorkshire Post.
- Surveys, reports and advice relating to the Punch Bowl have been commissioned from professional bodies in preparation for the completion of the application process.
- We have consulted extensively with other community owned pubs, who have been very generous, giving their time and experience of the process to help us as much as possible.

*Lovely old view of Low Street and the Punch Bowl - do we really want to lose this piece of history ???*





- We have also been allocated 10 hours of guidance and support from Plunkett UK, a group who specialise in offering in depth help to community projects such as ours. They were heavily involved in our community shop.
- A Facebook page entitled **Burton in Lonsdale Community Inn** has been set up—do please 'like' it and ask as many friends and family as possible to support us!  
<https://www.facebook.com/profile.php?id=61556588049685>
- We now have a web site—Do please sign up to ensure you are kept up to date with developments, it will be updated whenever there is news!  
<https://www.burtoncommunityinn.com>



*The Punch Bowl in its heyday  
No EV chargers needed then!*

- We would like to acknowledge people's generosity in their return of the Pledge in Principle form, which will allow us to gauge the likely funds to be raised by the community. If you know of any friends or family who might be interested in owning a teeny bit of our village pub, please direct them to:-  
<https://forms.gle/c4gatdNNn9bT1Y3x7>

It cannot be emphasised enough how your continued support and enthusiasm is fundamental to the success of this campaign. All those pubs who have successfully paved the way before us have been adamant that to be able to provide evidence of strong community involvement and support was paramount to their success. YOU can do this by signing up to the web site, following us on Facebook and spreading the word to everyone you know, regardless of where they are. We even have a follower on Facebook as far away as New Zealand!

## BOOK CAFE

It's been a long time since our last Book Cafe due to the refurbishments at the village hall. The second stage of these works are now complete and we have the hall back! So, our first Book Cafe of 2024 will be on [Saturday 20th April](#) at the usual time - [10am - 12 noon](#).

There will be Bacon Baps and the usual array of delicious cakes together with a large selection of books. We are always on the look out for recent novels in good condition, but please don't offload books from 'clearance' upon us, we cannot cope!! Hope to see as many of you as possible, it's been ages, but hopefully it will be 'business as usual' on [20th April!](#)

## ***Pals With Trowels***

*Elections continued from p6*

### **Voter ID** (stay awake!!)

Voters in England now need to show **photo ID** to vote at polling stations in some elections.

This applies to:

UK parliamentary elections, including general elections, by-elections

Passport, driving licence or bus pass will suffice.

However, if you don't have these, you apply for free voter ID.

Deadline: 5pm Wednesday 24 April for free voter ID applications for the Thursday 2 May elections.

Applications can be done online or by post

Apply online at: [www.gov.uk/apply-for-voter-id-authority-certificate](https://www.gov.uk/apply-for-voter-id-authority-certificate)

Apply by post: by filling out a paper application form and sending it to your local council.

You can contact your local council to request a form or you can visit:

[Apply for a Voter Authority Certificate by post if you're living in the UK - GOV.UK](https://www.gov.uk/apply-for-a-voter-authority-certificate-by-post-if-you-re-living-in-the-uk)  
([www.gov.uk](https://www.gov.uk))by-elections

Police and Crime Commissioner elections.

Apologies for the lengthy article – now make yourself a cup of tea to recover!

# CHRIS BANNISTER

*Featuring songs from the Singer-Songwriter era  
plus some originals from the new album 'The Calling Course'*



**Saturday 27th April · 8.00pm**

**BURTON-IN-LONSDALE**

**VILLAGE HALL**

**HIGH STREET, BURTON IN LONSDALE LA6 3JU**

**Tickets: £10.00 - Reserve by Calling/Texting 07973 802637**

**Doors Open 7.30pm | Bring Your Own Drinks**





Thank You.

I wish to thank my family and friends for the many and varied acts of kindness shown and given to me throughout 2023, and to all who remembered me in their prayers. Jane (Burns)

# Restoration Den & Shop

1 Main Road, Hellifield BD23 4HX

Garden Furniture Makers & Restorers

Vintage Toy Restorers

Garden Maintenance

Powder Coating Service

Cleaning & Organising Service

Collection & Delivery Service

Painting & Decorating Service

Tuesday to Saturday 10am-5pm

Contact: Richard & Emma on 07730 285153

Email: [emmagalley@yahoo.co.uk](mailto:emmagalley@yahoo.co.uk)

## J. LAWSON

### ELECTRICAL CONTRACTOR

14 MANOR CLOSE

07786 222566

BURTON IN LONSDALE

015242 62916

LA6 3NE



*Ali & Rachel*  
**THE BARBERS SHOP**  
Station Road,  
Bentham

*Established over 25 years*

Open Mon-Sat with appointments on weekdays,  
walk-ins Thursday evenings and Saturday mornings.

A professional and friendly service guaranteed.

**Call Rachel or Ali on 07851464433/07761725744 or pop in!**



## If you go into the Church...

If you have been inside All Saints' Church recently you will have seen the wonderful model church that has arrived, skilfully created by Kate our village miniaturist.

Look carefully each time you come in to church, to see the changes she makes, from the wreath of poppies for Remembrance Sunday, to the snow at Christmas, to the flowers and chicks for Easter! We send a huge thanks to Kate for her generous gift to us.

Clinical Reflexology &  
Indian Head Massage



GREAT FOR

- Pain relief
- Better sleep
- Depression

Available in Burton in Lonsdale  
& surrounding areas.

[www.reflexzones.co.uk](http://www.reflexzones.co.uk)  
0779 517 5563



*Everything for*

- \*Knitting\*
- \*Crocheting\*
- \*Sewing\*
- \*Felting\*
- \*Quilting...

*...and all manner of crafting  
and creating.*

*Craftopia*

6 Main Street, Ingleton, LA6 3EB,  
North Yorkshire  
Tel: 015242 41221  
email: [crafterpia.ingleton@gmail.com](mailto:crafterpia.ingleton@gmail.com)  
[www.crafterpiaingleton.co.uk](http://www.crafterpiaingleton.co.uk)



**WILL HAMBLING**

PAINTING & DECORATING  
INTERIOR & EXTERIOR



[WILL.HAMBLING@SKY.COM](mailto:WILL.HAMBLING@SKY.COM)  
07858 572 336

**The Piano Man**  
Christopher Bethell

Professional tuner,  
servicing and repairing  
upright and grand pianos

07817 162686  
[chrisbethell137@gmail.com](mailto:chrisbethell137@gmail.com)



## NOTES FROM AN UNINTENDED NATURALIST APRIL 2024

Spring –the celebratory season of new life. After a particularly wet winter it is much welcomed!

The Christian celebration of Spring is focussed on Easter. Our shops have shelves laden with colourfully packaged chocolate Easter eggs and gold foil-wrapped chocolate rabbits. It is a joyful annual ritual that gives us time to pause and reflect in an unstable modern world. A time to sow seeds and make plans to enjoy the longer daylight hours and all the new greening up around us.

As a youngster I used to wrap the empty eggshells in onion skins to dye them soft amber and red patterns. There are many traditions all over Britain for egg-rolling and other such jolly events to get adults and children together to have fun.

There are some bizarre Northern folk traditions performed in Spring. I once followed the Bacup Coconut dancers around their traditional route - an unforgettable experience. The Bacup Coconutters black up their faces, wear black and red and white skirted costumes and dance in clogs. There is controversy today about the “blacking up” but this is reference to the former underground miners to whom the Coconutters pay tribute and is not racially disrespectful. Singing and dancing on their way, the colourful group made one of their calls to a care home where the residents were waiting seated outside to enjoy the spectacle. One elderly man was paying particular attention. I spoke to him afterwards and he told me he had been a clog maker for decades and was so pleased to see his clogs still in use. The traffic has to give way to the dancers and the following crowds; it is a unique Bacup tradition.

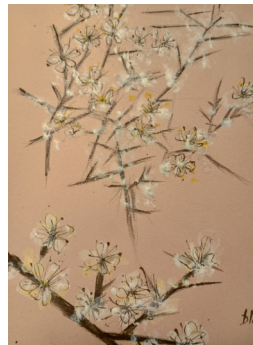
The period of Lent that precedes Easter overlaps this year with the month of Ramadan for Muslims. It has been a privilege to get to know and understand the discipline of Muslims who, during Ramadan, fast between sunrise and sunset. The evening meal is called Iftar; a glorious feast which is shared after thankful prayers with family and friends. The Muslim children, I have taught in Lancaster have not been forced to fast, but want to emulate their parents, who follow this regime to strengthen their mental resolve and spiritual faith. On the times I have been invited to share, it has been very humbling to get some understanding of this beautiful culture. The Palestinian family I know are very mindful that, in Gaza, this Ramadan period is not so joyful one, as the Gazans are on the edge of total famine.

This period of Spring and renewal, has to give us resolve and hope for making a better and more peaceful future in our world.

Nature is reawakening after winter. The hedgerow, I planted in my garden has a mix of native broadleaf plants and it is the fragrant profusion of small creamy blossoms on the Blackthorn that is the first of the bare winter branches to show this new life. Blackthorn, *Prunus Spinosa* named because of its sharp spiny thorns, produces this froth of blossom long before green foliage appears. The choice of Blackthorn for hedging traditionally makes it a very effective stock barrier. No cattle want to chew through those fierce thorns. The leaves come later and in autumn the fruit or drupes of blue-black sloes appear. After hard frosts, their bitter astringent taste is much improved for making Sloe Gin.

My late father had much blackthorn in his hedging and was continuing a Celtic tradition by choosing a straight stout stick to make a particular walking stick. In Celtic lore, the Dragon Stick is called a Shillelagh and Druids used it as a sign of authority with its special powers.

After becoming the first Welsh National Champion Town Crier, my father was encouraged to enter the World Championships, and so





had a brass Welsh dragon surmounting his stick. When dressed in his fine regalia, he cried the traditional “Oyez,Oyez!”, before delivering his speech, holding the special stick in his right hand. And his skills along with the ancient and magical properties of his Blackthorn, won him the World Championships in Ghent in 2000.



**Easter Monday Bank Holiday Event**

**Early driving training**

I think it was Mark Twain that said something along the lines of, “When I was 20 my parents knew so little but by the time I was 30 I was amazed how much they had learned.” You may have teenagers who know everything, well here’s your chance to let them prove it.

As part of the national initiative to improve driving standards in young drivers the recreation ground will be open on Easter Monday to 14, 15 and 16 year olds, with accompanying supervising adults. The idea is for pre licence age drivers to gain some experience moving and steering either car or motorcycle for an hour in preparation for when they get a provisional licence. Bring your own car/motorcycle, insurance is your responsibility. Weather permitting there will be a track round the perimeter of the field. Easter Monday, Recreation Ground. 9.30am to 1.00pm.

**Full Days Available!**

Happy Days at **Busy Bodies Pre School**

All 3 to 4 year olds can access 15 hours per week of free early years entitlement. Some 2 year olds are also eligible if criteria met.

**Session Times**  
**Monday, Tuesday & Thursday**

Morning Session - 9am-12.30pm - £14.00 (includes lunch period)  
 Afternoon Session - 12.30pm - 3pm - £10

Full Day - £24.00

(A school lunch can be provided upon request for £1.10)

Busy Bodies Pre School,  
 c/o Melling St Wilfrid Church  
 of England Primary School,  
 Lodge Lane,  
 Melling,  
 LA6 2RE.  
 015242 21538 Ext 2

**Bay Vets**  
 “The Community Vets”

Inspiring trust, passion and care to deliver excellence to pets and their families.

Lancaster 01524 32696  
 Morecambe 01524 410867  
 Milnthorpe 015395 62770  
 Caton 01524 770615

24 hours emergency service

info@bayvets.co.uk  
 www.bayvets.co.uk

**Good Friday? Canon Peter Greenwood**  
**Team Rector in the Ingleborough Team**

The allotment, theology, and our life experiences all tell us the same story. The dark and the light are both part of our journey.

I heard the Revd Nick Trenholme, our team vicar based in Ingleton, quote the speaker Stephen Sinek recently, who with regard to business leadership says something similar. Namely that the future is bright even when we are surrounded by darkness. This is not a blind positivity that says everything is alright, even when it is not. This is an optimism which acknowledges the present circumstances, and affirms that there is still light at the end of the tunnel.

The Easter story is the same. It is not blind positivity. It acknowledges the reality of suffering and death we all walk through in our lives. It may feel like Good Friday today, but resurrection Easter Day is still coming. It's a yearly routine the natural world brings to us through autumn, winter, spring, and summer. So that we won't be surprised when it happens to us, we'll be prepared. It's a routine that Lent, Holy Week and Easter bring us every year. So that we won't be surprised when it happens to us, we'll be prepared.

God bless you for your potatoes,  
and God bless you for your life,  
love Peter

**LUNESDALE LAWN TENNIS CLUB - Ball Lane Caton**

Open Day - to celebrate the opening of the Grass Court Season

On our 3 superb grass courts - **5th May 2024 2pm**

Grand Official Opening another open day to celebrate

Our new 2 new carpet courts **19th May 2024 2pm.**

**We welcome potential new members of any age or standard. There will be an opportunity to try your hand competitively or just have a fun game.**



**i.a.krigger**  
CARPETS • VINYLs • RE-FITTING

**IAN AKRIGG**  
FRIENDLY & PROFESSIONAL ADVICE

📞 07539626044    🌐 /I.Akrigg/

**CALL FOR A FREE QUOTE & MEASURING SERVICE**



**GFP**  
SERVICING & SALES OF  
GARDEN MACHINERY & TRAILERS

New **HAYTER/TORO** mower range  
now in stock

**Graham Fawcett Plant Ltd**  
Unit 3 Bentham Industrial Estate, Bentham LA2 7NB  
**015242 62888**

## Lonsdale Wheelers Recreation group: friends, fun and fitness

Lonsdale Wheelers is a *British Cycling* affiliated club based in Burton in Lonsdale. The Club has a Standard group and a Recreation Group (Rec Group). We always choose the quieter roads. This might mean hillier routes, but our aim is to avoid main roads like the plague. All rides include a café stop.



The Standard group offers longer, faster rides up to 70 miles and uses a Whatsapp group to arrange 2 or 3 rides per week dependent on the weather and the availability of riders. This group also organise occasional car assisted awaydays and overnight trips. For example, we have been to Shropshire and the Peak District in the last couple of years. We've also had several weeklong trips to Mallorca (the Mecca for great cycling), as well as mainland Spain and the French Alps.

The Rec Group is designed for cyclists who are looking for a leisurely, sociable, morning ride with friends, with no competition or pressure to 'keep up'. We are almost all on electric bikes and typically cover 20 - 30 miles. We plan rides on the 2<sup>nd</sup> and 4<sup>th</sup> Sunday morning of each month through the summer and typically start at 9.30 am from the Burton in Lonsdale Pavilion or the Sun Dial in Low Bentham. The group is a roughly equal mixture of men and women.

The Rec Group starts its new season on 14<sup>th</sup> April with a leisurely 18 mile circuit along Mewith Lane with a café stop in Clapham and return via Ingleton. There is a 20 mile loop into the Forest of Bowland with a stop in Wray on 28<sup>th</sup> April.

You can find all the Rec group rides and other events listed on our website at [Lonsdalewheelers.weebly.com](http://Lonsdalewheelers.weebly.com). Club membership is available for only £5 per annum to cover BC affiliation and admin. We welcome new members to either group. If you are interested, go to the website or email our secretary on [timrollinson@icloud.com](mailto:timrollinson@icloud.com) to find out more.

An advertisement for 'Temptations Bentham' and 'Pennine Outdoor Fabrics'. The background is a colorful landscape with flowers and butterflies. Text includes: '31 Main St, Bentham', '015242 61868', 'A treasure trove of fabulous fabrics! Quilting & Dressmaking Water Resistant & Breathable Buckles, Webbing & Haberdashery Plus Knitting & Crochet Yarns & Patterns', and website URLs [www.temptationsbentham.co.uk](http://www.temptationsbentham.co.uk) and [www.pennineoutdoor.co.uk](http://www.pennineoutdoor.co.uk).

Temptations Bentham  
31 Main St, Bentham  
015242 61868  
A treasure trove of fabulous fabrics!  
Quilting & Dressmaking  
Water Resistant & Breathable  
Buckles, Webbing & Haberdashery  
Plus Knitting & Crochet  
Yarns & Patterns  
[www.temptationsbentham.co.uk](http://www.temptationsbentham.co.uk)  
[www.pennineoutdoor.co.uk](http://www.pennineoutdoor.co.uk)

An advertisement for 'Country Harvest' farm shop. The background is a rural landscape with a stone wall and sheep. Text includes: 'New Rd, Ingleton, LA6 3PE - 01524242223', 'Country Harvest', 'Where the Dales meet the Lakes', 'FOOD HALL CLOTHING COFFEE SHOP GIFTS & CRAFTS', and 'MORE THAN JUST A FARM SHOP'.

New Rd, Ingleton, LA6 3PE - 01524242223  
Country Harvest  
Where the Dales meet the Lakes  
FOOD HALL CLOTHING  
COFFEE SHOP GIFTS & CRAFTS  
Coffee shop Farmshop Butchery Bakery Gift Hall Clothing Hall Outdoor Living Cabin  
[www.country-harvest.co.uk](http://www.country-harvest.co.uk) // Follow us on social media!  
MORE THAN JUST A FARM SHOP

**PROFESSIONAL HOUSE  
CLEARANCE SERVICE**

FULL AND PART CLEARANCES  
UNDERTAKEN.

HOUSE, GARAGES AND ANY  
OUTBUILDINGS AS REQUIRED.

REASONABLE RATES.

TRUSTWORTHY, EFFICIENT AND  
ENVIRONMENTALLY AWARE.

JUSTIN MERRY 07976 357560



Wood4The Trees

Sam Watson

Bentham

015242 37728

07789 901329

Tree Care and Forestry. Felling,  
Thinning, Reductions, Stump Grinding,  
Pruning, Hedging and Hedge Laying.

**THE BURTONIAN ADVERTISING RATES**

£110 for half a page for a year (6 issues)

£55 for a quarter of a page for a year (6 issues)

£27.50 for an eighth of a page for a year (6 issues)

Other sizes by arrangement

Flyer inserts (pre-printed by advertiser) £27.50 for A4 sheet which is pre-folded to A5 size, or A5 single sheet.

Flyer to be printed by The Burtonian by arrangement only, cost to be agreed beforehand.

Rates include publication on the Burton in Lonsdale website and a direct link to your website if you supply the appropriate details.

£22 for a single issue

£11 for a single issue

£5.50 for a single issue

**The Burtonian is published on the 1<sup>st</sup> February, April, June, August, October and December. Press date is the 18<sup>th</sup> of the previous month.**

Copy should be submitted earlier to the editor to ensure that it can be printed to the best advantage. Copy can be altered in between issues.

All adverts can now be in colour.

Copy can be emailed to [burton.news@gmail.com](mailto:burton.news@gmail.com) or left in Burton Shop for collection.

Please make cheques payable to 'Burton Communication Group' and send them to the treasurer indicating whether you require a receipt. Cheques and cash can also be left at Burton Village Shop if more convenient. Cheques are preferred due to banking restrictions.

Payments may be made by bank transfer to HSBC so long as your identity is clearly stated: Sort code 401008 account 51227645

Paul Adams

Treasurer – Burton Communication Group

11 Manor Close, Burton in Lonsdale, Carnforth, LA6 3NE

015242 63215

[Paul.adams2214@btinternet.com](mailto:Paul.adams2214@btinternet.com)

## The Bentham Line

### ***Mondays to Saturdays***

|            |      |      |      |      |      |      |      |      |
|------------|------|------|------|------|------|------|------|------|
| Bentham    | 0601 | 0805 | 0935 | 1136 | 1337 | 1538 | 1849 | 2040 |
| Wennington | 0606 | 0810 | 0940 | 1142 | 1343 | 1543 | 1855 | 2046 |
| Lancaster  | 0630 | 0846 | 1006 | 1211 | 1411 | 1611 | 1924 | 2117 |

### ***Sundays***

|            |      |      |      |      |      |
|------------|------|------|------|------|------|
| Bentham    | 0956 | 1148 | 1425 | 1648 | 1847 |
| Wennington | 1001 | 1153 | 1450 | 1653 | 1852 |
| Lancaster  | 1025 | 1220 | 1518 | 1721 | 1919 |

### ***Mondays to Saturdays***

|            |      |      |      |      |      |      |      |      |
|------------|------|------|------|------|------|------|------|------|
| Lancaster  | 0648 | 0941 | 1046 | 1248 | 1447 | 1745 | 2030 | 2131 |
| Wennington | 0712 | 1005 | 1110 | 1312 | 1511 | 1809 | 2054 | 2156 |
| Bentham    | 0717 | 1011 | 1115 | 1315 | 1516 | 1815 | 2059 | 2102 |

### ***Sundays***

|            |      |      |      |      |      |
|------------|------|------|------|------|------|
| Lancaster  | 1103 | 1344 | 1552 | 1752 | 2017 |
| Wennington | 1128 | 1408 | 1616 | 1816 | 2042 |
| Bentham    | 1134 | 1413 | 1622 | 1821 | 2048 |

## Bus Service

### **Service 583**

Klch.co.uk

#### Mondays to Fridays

|                            |  |
|----------------------------|--|
| To Bentham (from shopside) | To Kirkby Lonsdale, connect to Lancaster |
| 10.09                      | 6.49                                     |
| 12.09                      | 10.26                                    |
| 14.09                      | 12.26                                    |
| 17.14                      | 14.26                                    |

#### Saturdays

|            |  |
|------------|--|
| To Bentham | To Kirkby Lonsdale, connect to Lancaster |
| 10.09      | 7.59                                     |
| 12.09      | 10.26                                    |
| 14.09      | 12.26                                    |
| 16.09      | 14.26                                    |
|            | 16.26                                    |

### **Gallaber Farm**

Holiday Cottage and Caravan Park  
 Cottage with stunning views sleeps 4  
 A 5 and a 6 berth static caravan for  
 holiday rental

15 touring pitches with hook up points

For further details please contact Jennifer  
 Sedgwick on 015242 61361 or visit our  
 website [www.gallaberfarm.co.uk](http://www.gallaberfarm.co.uk)

### **Holiday Cottage High Street, Burton in Lonsdale**

Warm cosy well equipped cottage ap-  
 pointed to a very good standard.  
 3 Bedroom, Sleeps 5. Sorry no pets.  
 Weekly and shorter breaks are welcome.  
 Discount for friends and relatives of lo-  
 cals.

For more details please contact Heather  
 on 07540422531  
 E mail: [watts.rae2@gmail.com](mailto:watts.rae2@gmail.com)



## ALL SAINTS CHURCH NEWS

### Sunday Services in April and May 2024

|                     |          |   |
|---------------------|----------|---|
| April 7th           | 8 am     | Holy Communion  |
|                     | 11 am    | Joint Service with the Methodist congregation   |
| April 14th          | 11 am    | Holy Communion with Holy Baptism  |
| April 21st          | 8 am     | Holy Communion 11 am Morning Prayer   |
| April 28th          | 11 am    | Holy Communion  |
| May 5th             | 8 am     | Holy Communion  |
|                     | 11 am    | Joint Service with the Methodist congregation   |
| May 9 <sup>th</sup> | 7.30 pm  | Ascension Day Service for all parishes in the Ingleborough Team area. Location to be confirmed. |
| May 12th            | 11.00 am | Holy Communion  |
| May 20th            | 8 am     | Holy Communion and 11 am Morning Worship  |
| May 27th            | 11 am    | Holy Communion  |

### Other Services and Events in April and May

All our services are open to everyone in the parish and we would love to see you either at a service or to join us for coffee after the Sunday morning service at 12 noon.

**Stay and Play**, our group for pre-school children (with parent or guardian) meets on Thursdays in the Church Room from 9.30 am until about 11.30. The group resume after Easter on 11<sup>th</sup> April. New families are always very welcome. There are toys and other things to entertain the children and tea, coffee and chat for the adults. For further information e-mail [allsaintscw@gmail.com](mailto:allsaintscw@gmail.com)

Each Friday morning we normally meet at 10 am in the Church Vestry for a short simple time of **Prayers for the Parish**. Do feel free to join us for about 30 minutes.

**Pancake Party on Shrove Tuesday** The improvements to the Village Hall had not been completed by Shrove Tuesday, so a collection was made and the cost of ingredients was donated. £100 was sent to the Children's Society. Thank you to all who contributed.

Best wishes Catherine, Church Warden at All Saints



## Refugees in Greece

***Our long term and very patient PCC secretary, Gwen Harris has written about her recent experience working with refugees in Northern Greece.***

I have just returned from teaching English for two months in Northern Greece for Lifting and International, a charity that provides support to refugees in many countries. Most of my students were Yazidis from Iraqi Kurdistan who suffered genocide under ISIS with ongoing persecution to this day. Most stay in the Greek camps for five to six months waiting for papers and hoping to join friends or family in Germany or other European countries. I think of Nargiz aged 21, who had not seen her father for eight years and whose face lit up when she spoke of being reunited with him.

Refugees get a small allowance on arrival but once accepted, often by Germany, the money stops while they wait for papers for onward travel so we distributed supplementary food to about 800 people weekly. An example was per person, per week, one large orange, 3 potatoes, 3 onions and a bag of beans. Some help was provided by friends and family already established in Europe but there was a general food shortage in the refugee camps. The refugees were waiting patiently in transit in the hope of a better life, of being able, at last, to live safely with families and loved ones. Safety, security, time with family, enough to eat are things often taken for granted here in the UK so it was a salutary lesson to me to appreciate what I have at home here in North Yorkshire.

Gwen Harris <https://www.lhi.org/northern-greece>



**BUMBLEBEE GALLERY**  
ART, HOME & GIFT

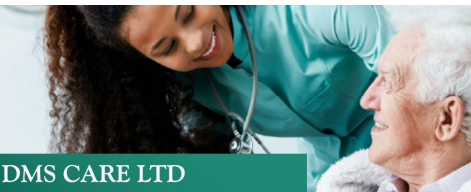
• [www.bumblebeegallery.co.uk](http://www.bumblebeegallery.co.uk) • 015242 98220 •

**ART GALLERY,  
HOME ACCESSORIES  
& GIFT SHOP**

**Bumblebee Gallery,  
Kirkby Lonsdale,**  
is a family run, independent Art, Home and Gift Shop. We are filled with a diverse and ever developing range of beautifully designed pieces, created by over 70 accomplished British artists and artisans. This includes local artists from right here in Burton in Lonsdale, as well as many from; Cumbria, Yorkshire, and Lancashire.



• 10 Market Street, Kirkby Lonsdale, LA6 2AU •



**DMS CARE LTD**

About Us  
At DMS CARE our primary concerns are your wellbeing and that of those close to you. We aim to be the number one supplier of holistic domiciliary care and suppliers of medical equipment in Bentham, Burton, Ingleton and surrounding areas.

At DMS CARE we understand how difficult things can be and that's why we tailor our service to your requirements. We care, not just for our clients, but for those around them and they will be updated as much as you allow so that your family and friends are up to date with your condition. We understand how stressful not knowing can be.

07856 392 209  
Email David Senior at [dmscareltd@gmail.com](mailto:dmscareltd@gmail.com)



Village Produce Show  
14<sup>th</sup> September 2024  
Village Hall



It's time to get planting and preparing for the village produce show!

Following the success of the show last year, classes have been increased to include:

Vegetables

- A Group of Onions
- Heaviest Courgette/Marrow
- Group of Courgettes
- 3 Beetroots with Foliage
- 3 Carrots with Foliage
- A Group of Runner Beans
- Longest Runner Bean
- A Group of Tomatoes
- Largest Tomato
- Freaky Vegetable
- 2 Homegrown Apples

Baking & Preserves

- Loaf of Bread (White/Brown/Seeded)
- A Plate of Cheese Scones
- A Plate of Fruit Scones
- A Round of Shortbread
- A Victoria Sponge Cake
- Gingerbread
- Fudge
- A Jar of Jam
- A Jar of Jelly
- A Jar of Chutney
- A Jar of Lemon Curd

Flowers

- A Dahlia Bloom
- A Rose Bloom
- A Vase of Cut Garden Flowers
- A Vase of Dahlias

Art & Craft

- A Sugar Craft Flower
- An Embroidery or Cross-stich with a Harvest Theme
- A Bird Box for Small Garden Birds
- Burton Life – painting, drawing, pastel, watercolour, etching etc.

Classes are open to all ages but, in addition, there will be dedicated Children's section with three age groups, (under 5, 5 – 8 years and 8 – 12 years) with the classes:

- A Painted Stone
- Gingerbread Person
- Imaginary Animal using Fruit & Vegetables
- Decorated Small Flowerpot

Points will be awarded to first three in each class with the Peter Kitching Cup being awarded to the child and adult with the most points.



Entry forms will be available in the village shop nearer the date.