



# The **Burtonian**

Burton in Lonsdale  
Village Newsletter

*Number 117 Aug/Sep 2023*

*50p - free to Residents*

CHAPEL LANE

J. Bullock  
5th May 2023

## Editorial

In May, the Village held it's Parish Meeting, a statutory requirement helpfully facilitated by (but not part of) of the Parish Council.

Remarkably some 25 organisations and groups gave reports to the Meeting. You can find the full reports in the Minutes section of the Parish Council's page on the Village website.

However we thought that it would be good to include some extracts (*pp 10-16*), just in case our readers are not aware of how much goes on.

....and to pay tribute to each of the authors for making the report and –even more –for their efforts in making their organisation such a success. Thank you.

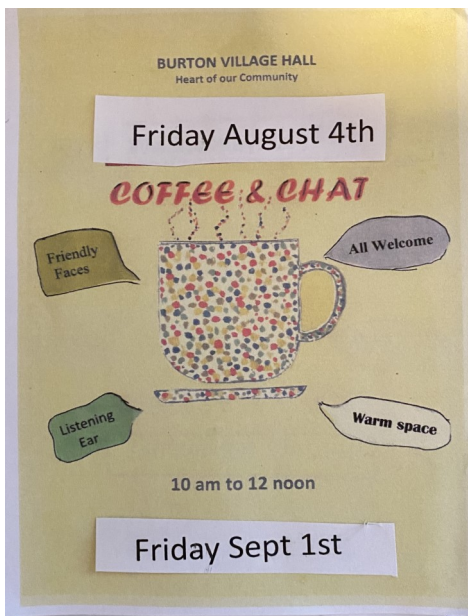
## Village Diary

04 Aug	Friday	10.00	Coffee and Chat	Village Hall
01 Sep	Friday	10.00	Coffee and Chat	Village Hall
02 Sep	Saturday	19.30	Film Night "The Unlikely Pilgrimage of Harold Fry"	Village Hall
09 Sep	Saturday		Village Produce Show and Harvest Supper	Village Hall
14 Sep	Thursday	19:30	Parish Council Meeting	Village Hall
23 Sep	Saturday	19.30	'70's Disco	Village Hall
30 Sep	Saturday	10.00	MacMillan Coffee Morning	Village Hall
07Oct	Saturday	19.30	Film Night "The Banshees of Inisherin"	Village Hall
07 Oct	Saturday	14.00	Jumble Sale	Ingleton Community Centre
21 Oct	Saturday	19.30	Jim Berry and The Dots	Village Hall

Editors David and Cecile Gillibrand [Burton.news@gmail.com](mailto:Burton.news@gmail.com)  
Next Copy date 18th September

The frontispiece is Jayne Bullock's lovely oilcolour of 'Coronation Day'





Burton Village Hall Restoration Fund  
 Advance Notice  
 A Jumble Sale at Ingleton Community Centre  
 Sat. October 7<sup>th</sup> at 2.00pm.  
 Start saving your Jumble now please!  
 For details call Janet on 07971487363

**United Harvest Festival All Saints Church  
 Sunday September 10th Everyone welcome**

We will be decorating the Church on Friday 8th from 9-30am. We would be very grateful for gifts of flowers & foliage and if anyone would like to help with decorating it would be greatly appreciated.

We will be supporting Bentham Foodbank again so donations of canned and dried foods or toiletries and cleaning products would be most welcome, there will be a box in the shop where they could be left. Thank you Jennifer Sedgwick

**A BIG THANK YOU** to all the people who bought plants from me this year. I raised £133 for Church Funds .

This will be my last year selling plants. Thank you to all the people who have bought plants over the years .

Mary Edmondson

## Alessandra makes ....Granola Bars

This month I am sharing a favourite of mine which is an adaptation of a Nigella recipe. It is ideal for picnics and lunch boxes, including grown up lunch boxes!

The granola bars are very simple and quick to make, and keep very well in an air tight tin. Making these would make a good activity during the holidays for a young person who is interested in learning to cook, supervision may be needed depending on their age. All the ingredients can be purchased in our village shop, so please support it, it's a win win for all of us. Note This is a very adaptable recipe, so as long as you keep to the exact weight, of dried fruit, nuts and seeds you can either stick to one type of dried fruit, nut or seed, or just simply create your own mix.

### Ingredients

1x 397g condensed milk + 250g rolled oats + 75g shredded coconut + 100g dried fruit eg. dates sultanas, cranberries + 125g mixed seed pumpkin, sunflower and sesame +125g nuts, eg. almonds, cashew, Brazil nuts, hazel nuts walnuts etc. +1 tsp vanilla extract +100g 70% chocolate, or chocolate of your choice +Pinch of good quality salt + Greaseproof paper to line the tin or a baking sheet liner.

### Method

Pre heat the oven to 130°C, gas mark 1/2 Baking tray 20cm x 26cm with a lip of 2.5 cms

1 Chop the nuts, but not too finely, keep the pieces quite big.

2 Put all the dry ingredients in a large bowl.

3 Add the condensed milk and vanilla extract and mix everything very well together

4 Transfer the mixture into the lined baking tray. Don't worry if it seems like too much; it will all fit in.

5 Using the back of a spoon press the mixture down firmly, finish off by smoothing and evening off the top surface.

6 Bake in the oven, after 45 mins take a look, it is ready when the top is a light golden colour, if it is still pale bake for a few minutes longer. Don't let it get too dark, or you will produce a very dry granola bar!

7 Allow to cool slightly. Then to remove from the baking tray place a chopping board that is larger than the baking tray on top and holding the two items together securely flip the tray over on to the chopping board. Peel back the greaseproof paper or liner and leave to completely cool.

8 Melt the chocolate by braking it up, placing in a heat proof bowl. Place the bowl over a pan of simmering water. Don't let the bowl touch the simmering water. Alternatively you could melt the chocolate in the microwave oven if you prefer.

9 Spread the melted chocolate over the top of the granola mix using a palette knife, sprinkle with a tiny amount of sea salt. Feel free to omit the chocolate and/or sea salt. It will be just as delicious without.

10 Once completely cold cut into slices.

**Tip** Make sure it is completely cold when cutting it up, otherwise it can be crumbly and may break-up. Store in a sealed container.



THANK YOU THANK YOU THANK YOU THANK YOU THANK YOU THANK YOU THANK YOU THANK YOU THANK YOU THANK YOU



## A recipe for Open Gardens

Take 18 unique and stunning gardens, all the product of hard work and love,

Prepare for the day with a hard-working team of Pals, a superb programme and a pinch of great promotion.

Add a village hall team of expert bakers and refreshment providers.

Stir in a great selection of plants and a cheery team to sell them.

Sprinkle in some great conversations about gardens, gardening and everything else.

Blend this with lots of visitors, grateful for the opportunity to see hidden gems and sample delicious scones.

Garnish with a stunning village, wonderful views and a vibrant community.

And finally, add a dollop of very good luck with the weather!

A huge thank you to everyone who made Open Gardens such a success. Especially to those people who opened up their gardens, who toiled in the heat to get them looking so good and offered beauty, charm and inspiration to everyone who visited. Many thanks to all the Pals with Trowels and all the Pals without Trowels who worked so hard to make the day run smoothly and give a helping hand wherever it was needed. The fund for our village projects has been replenished but more than anything else it was a smashing community day and a super re-set after a four-year lull.

We'll go again in 2025!

With many thanks,

Kate, on behalf of the Pals with Trowels



THANK YOU THANK YOU THANK YOU THANK YOU THANK YOU THANK YOU THANK YOU THANK YOU THANK YOU THANK YOU

# Your Local Chimney Sweep Services

Call Sean Goodwin on  
07779 885 125

**SPECIAL DISCOUNTED RATE FOR  
BURTON RESIDENTS**

## CHIMNEY SWEEP SERVICES

Fully trained, clean, professional service.



- Chimney repairs
- Birds nest removal
- Bird guards
- Pots
- Cows
- CCTV chimney inspection



OGLETHORPE  
STURTON &  
GILLIBRAND

Friendly, professional legal advice

Individuals | business | agriculture

Call us today: 01524 846 846

LANCASTER | KIRKBY LONSDALE  
www.osg.co.uk



**Ofsted rated us Outstanding in all areas**  
**Open 7.30am – 6.30pm**

- 30 hours free childcare for eligible 3 & 4 year olds.
- 15 hours free childcare for eligible 2 year olds.
- Modern facilities and a friendly traditional atmosphere.
- Flexible opening hours to cater for most needs
- Dedicated Baby facilities.
- Holiday club available during all school holidays.

**1 Station Road**  
**HORNBY**

**T: 015242 22288**

**E: [info@hornbydaynursery.co.uk](mailto:info@hornbydaynursery.co.uk)**

**Call or email the nursery to discuss your individual needs or to arrange a visit.**



# Village Produce Show

## Village Hall

**Saturday 9th September**

10am – 5pm followed by Harvest Jacobs Join at 5 – 6pm

**Art, Baking, Flowers, Indoor Plants, Jams & Vegetables**

**Entries from 10am.**

**Entry forms & schedule from Village Shop**



**Janette Street -  
Psychotherapist and Counsellor  
Qualified in  
Person Centred Counselling / PGDip  
BA Hons**

I have experience working with adults, adolescents and families with a range of presenting concerns including

- Anxiety
- Depression/Low Mood
- Autism
- Grief and Loss
- Relationships

Email: [Janette.therapy67@gmail.com](mailto:Janette.therapy67@gmail.com)

Text: 07598758374

Website: [www.janetestreet.co.uk](http://www.janetestreet.co.uk)

BACP Registered Practitioner.

**bacp** |



**USE YOUR  
POST OFFICE**

Burton Community Shop  
High Street

**Five mornings a week  
9am to 1pm  
(No afternoon service)**

*Visit Julie or Julie and  
discuss your requirements  
or ring 63397 for information*

**YOUR Post Office provides:**

- **FREE** payment of utility, council tax and other bills with instant receipt
- **Draw cash from ALL** high street bank & building society accounts
- **Buy & sell foreign currency and travel insurance at competitive rates**



## Talking Rubbish.....

### What happens to your rubbish after it is collected from the kerb?

Do you know where the rubbish from your bin collection goes in North Yorkshire?

You might assume it all goes to landfill, as it did in the past, but since March 2018 all household rubbish in North Yorkshire goes to Allerton Waste Recovery Park, which is off the A1 near Knaresborough.

So even if you are in Scarborough, Skipton or Stokesley, your rubbish goes to the same place.

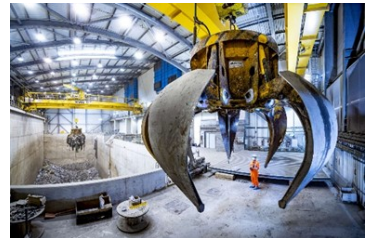
The facility employs 90 local people and can process 320,000 tonnes of waste each year from York and North

Yorkshire households. Through a combination of three technologies, it is reducing the amount of household rubbish being sent to landfill by at least 90%.



Here's how it does it:

- The mechanical treatment plant receives general rubbish mainly originating from household bins (not recycling bins) and removes any remaining metal and plastics for recycling.
- The anaerobic digestion plant treats the organic waste part and produces a biogas, which generates renewable electricity.
- The energy from waste plant burns the waste that remains after separation of the recyclables and treatment of organic waste, producing steam to feed an electricity generating turbine that produces enough electricity to supply about 40,000 homes.



Landfill is only used for waste that is not suitable for treatment.

The visitor and education centre is open to individuals, educational and community groups. If getting to the centre is an issue, the education officer can come to you or offer a virtual tour and talk.

Find out [more about Allerton Waste Recovery Park and book a visit](#).



Full Days Available!



Happy Days at  
**Busy Bodies**  
Pre School

All 3 to 4 year olds can access 15 hours per week of free early years entitlement. Some 2 year olds are also eligible if criteria met.

**Session Times**  
**Monday, Tuesday & Thursday**

Morning Session - 9am-12.30pm - £14.00 (includes lunch period)  
Afternoon Session - 12.30pm - 3pm - £10

Full Day - £24.00

(A school lunch can be provided upon request for £1.10)

**Busy Bodies Pre School,**  
c/o Melling St Wilfrid Church  
of England Primary School,  
Lodge Lane,  
Melling,  
LA6 2RE.  
015242 21538 Ext 2



**Bay Vets**  
"The Community Vets"

Inspiring trust, passion and care to deliver excellence to pets and their families.

Lancaster 01524 32696  
Morecambe 01524 410867  
Milnthorpe 015395 62770  
Caton 01524 770615

24 hours emergency service

info@bayvets.co.uk  
www.bayvets.co.uk



**H & M**  
C R A F T S M E N

KITCHENS | BEDROOMS | STUDIES



**Full design and fitting service**  
*Showroom Open:*  
Mon-Fri 9am-5pm | Sat 10am-1pm

**Ingleton | North Yorks | LA6 3NU**  
**015242 41535**  
kitchens**and**bedrooms.co.uk



**Dalehead**  
Veterinary Group Ltd



**Healthy Pet Club**  
PUPPY & KITTEN PLANS



**01729 823538**  
www.daleheadvetgroup.co.uk

## The Parish Meeting

Representatives of village organisations were invited to present a report of each of their group's activities and plans:-

### **B4RN4BiL - by Simon Stockton**

B4RN contractors as well as the B4RN4BiL Community Workforce were busy installing the B4RN network in the village during the second half of 2022. With over 125 properties now connected and enjoying the world's fastest broadband, the project has been extremely successful. There are a few loose ends to tie up.

A B4RN connection has been provided for every property in the village. So if you want B4RN now or in the future please don't hesitate to request B4RN by searching 'GetB4RN' online.

As a result of the efforts of the B4RN4BiL Community Workforce, £15,000 has been raised (held by BRG) which members would like to spend on community projects.

Therefore, we are looking to support as many projects as we can and ideally those that are already part funded. Funding is one aspect of a project, but when coupled with the Community Workforce's efforts we have the potential to make a real impact in our community.

If you have a project in mind that requires funding within this ethos then please don't hesitate to get in touch.

### **Burton-in Lonsdale Book Group- by Ruth Brown**

Membership of the book group remains at 9. We try to meet every 4 to 6 weeks in each other's homes to discuss a book chosen by a member who hosts the group. We have recently created a WhatsApp group to keep in touch between dates especially when someone can't attend.

NB. It was pointed out that there is at least one other book club in the village but only one report was received.

### **Bowling Club - by John Wood**

Burton Bowling Club continues to thrive with a membership of over 30. On behalf of the club I would like to thank all who help its running. The officials are: Chairman: Brian Ramwell, Treasurer; Tony Blacow, Secretary: Steve Vose, President and Safety Officer: John Wood. Committee: Doreen Dryden, Shaun Wilson, Chris and Val Thompson, Lee Marshall, Malcolm Bibby. The green is mowed and maintained by Shaun Wilson, Tony Blacow and John Mason.

We field teams in the South Westmorland Seniors Bowling League, the Kendal Bowling league and South Lakeland Rural League (This league is specifically for beginners to introduce them into the game).

Friendly matches are played on Saturday afternoons, against Ingleton, Bentham, Hornby, Kirkby Lonsdale and Austwick.

Thanks go to the ladies of the club who make the teas and organise the raffles.

We raise funds by means of annual subscriptions and an annual jumble sale held at Ingleton Community Centre in the Spring.

We are always looking to attract new members to join us and enjoy the company and friendship that bowling provides. We hold practice sessions on Thursday evenings at 6.30 and also practice on Wednesday and Friday afternoons at 2pm.

Visitors to the village are welcome to play throughout the season, fee £1 per person.



**Bridge Club** - by Ruth Brown

The Bridge Club at Burton re-started in September 2022 on Monday nights in the Sports Pavilion from 7 pm to 9.30 pm.

We have been gradually building up numbers and now have about 20 members. We charge a nominal fee each week to cover the cost of hiring the pavilion. We have a drink and biscuits halfway through the evening bringing our own tea, coffee, milk and biscuits. We would be pleased to welcome new members but unfortunately we are not able to offer tuition.

**Burton Chapel** - by Jenny Sedgewick

Burton Chapel continue to meet every Sunday morning in the Church room at All Saints Church, except on the 1st Sunday of every month when there is a joint service with All Saints Church at 11 am. Everyone is welcome.

**Burton Film Nights** - by Teena Douglass Taylor

The Burton In Lonsdale Film Group re-started post-Covid in September 2022 with ten members in the group.

The night of the monthly film showing was changed to a Saturday night at 7.30pm (formerly it was Tuesday night) as a trial. This has been a great success with attendance in the Village Hall of between 35 and 60 people.

Refreshments sourced from the Village Shop are served prior to the film and in the interval.

**Burton Communication Group** by David Taylor

This is the group responsible for producing the Burtonian every two months.

It's free to residents of Burton in Lonsdale or 50p otherwise. How is this possible?

Income is raised by selling advertising space at a very reasonable rate, considering the quality of the finished article. For example, it only costs £27.50 for a one eighth page advert for a year (6 issues).

It is available on line, through the Village website.

The BCG is also responsible for the Village website which includes Parish Council matters and the Pavilion bookings. We are currently planning a major revision to the site including links to other Village websites.

We are also considering establishing a regular mailing to interested residents about forthcoming events or other things of interest.

**Burton Regeneration Group** - by Ian Thompson, Chair of the Trustees

Since completing the sports pavilion project, Burton Regeneration Group has restricted its activities to supporting projects initiated by other groups in the village. It has done this by providing funding to Burton Pals with Trowels and through the Parish Council for the improvement of the Multi-Use Games Area.

When the B4RN4BiL project was set up, BRG offered its support as a registered charity with an established bank account and annual accounting process. This enabled B4RN4BiL to concentrate on the practical aspects of their project while BRG looked after the administration of claiming grants for the work done by community volunteers.

The funds raised by the Community Workforce in the B4RN4BiL project are currently held in the BRG bank account and are being used to deliver projects for the village.

**Burton in Lonsdale First Responders.** By Julie Gabriel-Clarke

First Responders are now fully active in the village with the health protocols introduced

during Covid largely lifted. We have recommenced face- to- face training and are also required to undertake greater online mandatory training.

I am pleased to say the village responders are shortly to be joined by another volunteer Colin Stroud. As ever we would be delighted if anyone else would like to undertake training to be a first responder.

#### **Community Workforce** - by Simon Stockton

The Burton in Lonsdale Community Workforce has been established , meeting once a month, to complete tasks in and around the village. It followed the successful project to instal B4RN in the Village.

The inaugural task, in March 2023, was to complete the replacement of the boards that surround the Multi-Use Games Area at the Recreation Field. In April 2023 the task was to replace the bench and build stone planters at the western entrance to the village which will be planted up by the Pals with Trowels group. The stone was donated by members of the community, a great example of what we can achieve working together.

Many thanks to all those in the Community Workforce group who keep turning up to improve the village for the benefit of all in our community. If you want to join the group you are more than welcome.

Communication is via WhatsApp and you can decide which tasks on which months that you would like to get.

If anyone has a project in mind that would be suited for the Community Workforce please don't hesitate to get in touch.

Simon Stockton / 07720705882 / stockton.simon@googlemail.com

#### **Concert and Cakes** -by Christine Wardle

Concert& Cakes is run by myself, organising the music and the publicity, Steve Vose managing the finances and Cathy Rowland organising the cakes. In the last year, we returned to our usual pattern of four concerts,in October, November, February and March. After a break of 2 years during the Covid-19 pandemic, October and November had a smaller audience than we used to have, but February and March seemed to be back to strength with between 100 and 120 at each.

#### **Coronation Committee** – Alan Coulthurst

Thanks to everyone for coming to the Coronation event which was a great success. It was a few months in the planning and it all came together on the day, helped by the fine weather. The Jubilee fund was used to cover the costs prior to the event. The committee would like to make the event an annual one if there are enough interested helpers.

Two junior members organised a raffle on the day raising £187 for Stay and Play.

#### **Emergency Plan** –by Andy Ive

The plan is updated annually and can be found on the village website. Please contact me if you see any needed amendments, or if anyone would like to take over the Plan.

#### **Friendship Group** - by Heather Randall

What a great selection of speakers we have found this year to share their amazing life stories and hobbies with us.

We have also enjoyed craft activities making Easter Cards, embroidered felt hearts and explored line drawing.

We meet on the First Thursday in the month in the Parish Church Hall at 2.00pm. Come along and join us for an afternoon of friendship and fun.

We next meet on Thursday 7th September at 2.00pm. We look forward to seeing you then.

Contact. Heather Randall on 62619 or Jane Burn on 61081

#### **Heritage Group** – by Carole Biles

The Heritage Group is made up of a small number of local ladies who are interested in preserving and extending the knowledge of village history.

Our most recent trip out was to view a really interesting piece of Burton Stoneware, the Craven Heifer Jug (a water jug manufactured for the Craven Heifer in Ingleton in 1896) We held a small exhibition last September on the Horticultural Society in Burton. This coincided with the Horticultural show.

Going forward we intend to continue with our oral history project – recording memories of Burton from ‘seasoned’ (that’s a nicer expression than ‘older’) members of our village. If anyone would like to join us or just come along to a meeting to get a feel of what we get up to

then please speak to any of the group members – Julie Gabriel-Clarke, Maggie Bruno, Marion Hodgson, Loretta Dolan, Jean Smith or myself.

#### **Jubilee Committee** – by Mike Lavelle

The first committee meeting was held in early January last year. By that time a few people had begun work: the bridal exhibition had been arranged, lighting the beacon was organised, permission to close roads had been sought, the PRS had been approached regarding any licences we might need and the availability of the band we wanted was checked. Other events were to include a disco, a classic car exhibition, a Coronation chicken night in the pub and a sports day for children. The village owes the Committee a huge thank you for their efforts. I would also like to thank the various people/ organisations for their donations, without them we would have had to charge more than we wanted for the different events. They include NYCC (David Ireton), CDC (Linda Brockbank and Stuart Handley), Burton in Lonsdale PC, Pals with Trowels, the Methodist Church, The Village Shop, Mick and Heather Hill, BiL Heritage Group and Concert & Cakes.

Each of the days was a success, Dani Sicari and the Easy Rollers were great fun and very entertaining, on the Saturday. On the Sunday the picnic and sports day, the easiest and cheapest event of the weekend, was a huge success,

At its final meeting the committee had to decide what to do with the surplus of £1,525.97 the events generated. It was agreed that a fund be created, the purpose of which is to provide seed funding for future village events.

#### **Lonsdale Wheelers** by Lyndon Thomas

The club still comprises 3 main groups catering for 3 different options and objectives:

Longer Ride Group: riding throughout the year on quiet roads at a pace that’s enjoyable; no one is left behind. Distances up to c70 miles.

Shorter Recreation Ride Group: twice a month spring to autumn, at a steadier pace and especially suited to anyone with an E-Bike. Distances typically c20-30 miles.

Mid-week Group: typically retired or working part-time. Distances typically up to 70 miles.

The longer ride group also organise car assisted away-days and overnight trips to add interest and keep things fresh. The club also participates in local sportives, as well as



many other special activities.

Membership remains only £5 per annum. [www.lonsdalewheelers.weebly.com](http://www.lonsdalewheelers.weebly.com)

### **Multimedia Shop** –by Simon Willan

Essentially we are a computer repair shop, but we also sell new and used computers.

We have been in the Village for more than 27 years providing a service to an ever growing number of people from far and wide. Many of whom are people who have lived locally but have moved to places as far away as Australia.

I think we have a rather different approach to the service we provide – I spent the first 18 years of my working life as a nurse so I aim to assess people’s needs and work out the best way of meeting them, rather than pushing sales!

### **Pals with Trowels** - by Marilyn Smith.

It has been a very successful and busy year for the PALS.

The bi-monthly book café has continued to be a very popular and well supported event and is now well established in the village calendar. The November book café saw the introduction of bacon sandwiches onto the menu.

We were given permission by the PC to source and plant two trees adjacent to the children’s playground to replace the two trees that had been removed a couple of years ago. We decided to purchase two flowering cherry trees.

In early Spring last year we successfully applied to the Platinum Jubilee Fund for a grant to enable us to create a wildlife area adjacent to the Orchard. A massive clearance operation was followed by the provision of bird boxes, bat boxes, wildflower planting and the erection of a living willow dome. At the beginning of the Easter holidays we were joined by children from the village and their families who had great fun building a bug hotel which hopefully will be hosting its first guests by now! Wood piles made from the felled trees have been placed throughout the area to act as habitats for all manner of creepy crawlies and any other wildlife that may care to use them.

Another challenge has been the renovation of the western entrance to the village, following the installation of the B4RN cabinet.

Wherever you look in and around the village you will come across the results of the work continually going on to keep the village looking its best. I would like to personally thank each and every one of our group for their continued hard work, and to the residents of Burton who support our events in such numbers, enabling us to continue to fund the work we do.

### **All Saints Church** by Christine Whitfield

We settled into a new, post covid, “normal” last year and enjoyed being able to host the Pancake Party in the village hall, summer and Advent fairs, Village produce Show, Concert & Cakes, Christmas Carol service & singing carols around the Christmas tree.

We said “goodbye” to Rev Denis Tate and his wife Pauline at the end of July. We are not allowed to advertise for a replacement Team Vicar until a replacement Team Rector has been appointed at St John’s Bentham!

But we have to provide the same pattern of services, celebrations, fund raising and still pay our Church Share of over £10,000 so we thank all our congregation, villagers and visitors who help to make this happen by their generous support.

**Stay & Play** by Christine Whitfield

Stay & Play continues on Thursday mornings from 9.30 in the Church room. It is a joy to those of us who volunteer to make this happen weekly, our numbers are increasing and we welcome families from the village and surrounding villages to meet, chat and play. We thank the World War One committee who donated the remainder of their funds to us, and have bought a Rollerball Fun House which has been a huge success. The older children chose some new books for our library, and we still have money left over which we will spend next year. Thank you to all our volunteers, families, and All Saints church for their support.

**Table tennis** by Denise O'Hara

The Table Tennis Group continues meet in the village hall on Tuesday and Thursday mornings. We enjoy friendly games, never too competitive but always fun, which hopefully keeps our reflexes sharp and provides manageable exercise for ageing limbs! It's a level playing field for men and women of all ages, as evidenced by our oldest player who is over 90. We think everyone would benefit from taking part. We do have a group of around 6 regular attendees. We need at least 4 players for a viable session from a table tennis point of view, and at least 5 if we are going to cover the cost of hiring the hall without dipping into our reserves. Please encourage anyone you know, to come and give it a go.

For those who wish to improve their game or maybe cannot attend in the daytime, there is an alternative session, usually on a Thursday evening, where coaching is provided by two more experienced players.

**Village Hall Committee** by Andy Ive

The Hall is doing well financially.

There is a programme of events being held, most of which have been well attended. On the building project, we have a detailed design layout agreed, and planning permission to carry out the work. A recently blocked drain necessitated the digging up of part of the yard and this is now repaired ready for the new toilet block. Grant funding is ongoing, and several organizations are being looked at for assistance.

The kitchen refurbishment has been completed and proving to be very popular, with just the extraction and opening window to be installed to solve a condensation issue. The sound system has now been reconnected in a new cabinet kindly built by Rique Linares.

Plans are also afoot to decorate the hall and try out some sound proofing to deaden the echo during concerts.

Film nights are continuing regularly, as are table tennis, book café, and a new, monthly, Wednesday Drop in café is being tried to replace the one that used to be held in the Methodist Hall.

### **Village Shop** by David Gillibrand

The Shop continues to thrive in its role as a principal facility in the Village. During the year we have held a public meeting – at which about 40 people attended and provided input on what they saw as our strengths and weaknesses, opportunities and threats. We have also carried out a customer survey, which has confirmed overwhelming satisfaction with the Shop. These exercises have helpfully identified ways to improve what we are doing.

In particular, I am pleased to confirm that, from 1st June, we will be opening until 6pm, on Mondays to Fridays.

Also we have placed the order for installation, in the next few weeks, of new doors, and will shortly be finalising the order for a new counter and shelving behind it. We will be rearranging the shop display and giving the shop a thorough makeover.

Apart from improving our customers “shopping experience” these changes will give the Shop better financial resilience, going forward. So we can be very confident about the future.

### **Young Farmers** by James Hodkinson

Burton In Lonsdale Young Farmers currently has 30 members signed on of mixed ages, between 10-26. We seem to have recently acquired a large group of younger members, 13-15 year old which will hopefully be the continuation of the club.

Within the parish we regularly host our Tuesday evening activities, often at the sports pavilion for outdoor/activities in summer and in the village hall mostly in winter time. We are often raising funds for the club and other charities, such as our domino drive held in the village hall, our muck chuck, delivering throughout the parish and carol singing.

### **Bellringing Group**

We practice on a Tuesday evening.

The bells ring on the first Sunday of the month and on special days. They were rung on Coronation Day and they joined in with Ring for the King. The group has many inexperienced bell ringers and 2 new members.

New recruits are welcome.

## SMART SIGNAL

Aerial & Satellite Installation & Repair

Wi-Fi & Home Network

CCTV Installation



Ben Fawcett

Frounts Cottage, Duke Street,

Burton In Lonsdale

015242 62017 – 07950028622

smartsignal@outlook.com



### **MARK WATSON**

**HOME & GARDEN MAINTENANCE**

Digging, fencing, hedge trimming, mowing, paving, planting, power washing, rockeries, rotavating, seeding, spraying, strimming, turfing,

Demolition, dry lining (plaster boarding), insulating lofts, pointing, rendering,

No job too small, reasonable rates, estimates given.

07759680938  
07759680943

Low Bentham  
015242 62038





# BULL FARM APPLE JUICING DAY



SATURDAY 7<sup>TH</sup> OCTOBER 2022, 10am - 4pm

Come and get your apples juiced!

Maximum 8 Kg of apples per person. Please bring apples washed and halved. Bring your own bottles (plastic drinks bottles will work fine).

No apples, no problem. Juicing demonstrations and tasting throughout the day. Purchase local apple juice. Plus a Bull Farm history display.

**Free event.**

Bull Farm, 11 High Street, Burton in Lonsdale, LA6 3JU.

**butler  
interiors**

Designers, suppliers & installers  
of quality German kitchens.

Call in at one of our beautiful showrooms in  
Lower Bentham or Kirkby Lonsdale

Butler Interiors  
Low Mills  
Mill Lane  
Low Bentham  
Lancaster  
LA2 7FL

015242 63388

Butler Interiors  
Lane House Business Park  
Kendal Road  
Kirkby Lonsdale  
Cumbria  
LA6 2HH

015242 37747

[www.butlerinteriors.co.uk](http://www.butlerinteriors.co.uk)

***B&W Funerals***

*(Brown & Whittaker)*

***James G Macdonald & Tara Wilson***

24 Hour Service

Private Chapel of Rest



Ingleton, Burton, Bentham, Austwick, Clapham,  
Settle, Wray, Hornby, Caton, Kirkby Lonsdale  
& all the surrounding areas

*We offer our own Funeral Plans on request*

6 Chapel Lane, Ingleton, Camforth LA6 3FX

[jmfunerals@gmail.com](mailto:jmfunerals@gmail.com)

Tel: 015242 41293

Mob: 07758002260 or 07912 568672 (Tara)

Find us on Facebook

## We should talk - *Mike Biles*

The two organisations responsible for most of the publicly accessible real estate in Burton are the Parish Council and the Parochial Church Council. Yet, in recent years, they haven't been talking much. No one really knows why – or, if they do, they're not saying. The Good News is that representatives of the two bodies amiably sat round a table on 6 June – D-Day. Tea, coffee (and biscuits) were consumed. And the first thing everyone did was to agree that it was a no-brainer to get together every now and again for mutual benefit, and that of the community. There, I've said it; it is in the public domain now. Remember, you heard it first in the Burtonian.

So, the discussions were generally about how people can help each other and work together for the greater good. Initial focus was on items of common interest. The Parish Council is responsible for maintaining the Old Churchyard that borders Chapel Hill and wants to do a better job. Yet this is consecrated church land, so it makes sense to share plans. The PC is also responsible for the village green and has proposed renovating the messy area outside the church caused by cars parking there over the years. The PCC needs volunteers to help tidy up the churchyards surrounding the church, and maintain them. The unusual Victorian lychgate in the old churchyard is in urgent need of repair. No one wants to see it fall down. So it was agreed to clear it of rubbish and remove branches of a neighbouring tree that were damaging the roof (both of which have been done) as a prelude to the PCC obtaining quotes for repair. Those quotes will reveal the scope of any problem to be overcome. All of these things are at the physical heart of our village. The PC and PCC can also help promote each other's events and initiatives – a practice that has already begun.

Watch this space, until engagement becomes habitual.

## Over 55 and thinking of downsizing in Bentham?

Our vibrant Extra Care scheme, Bowland View, could be the perfect place for you.

### Highlights include:

- On-site café/bistro and hair salon
- Optional 24/7 care service if and when you need it
- Pets welcome to move in too

\*Extra Care is for over 65s, however you may also be eligible if you are aged between 55 and 64 and have a care need. Eligibility criteria, monthly rent up to 75% on shared ownership, care charges and service charges apply.

Arrange a viewing by calling **07753 451 079** or emailing **info.bowlandview@housing21.org.uk**

**Bowland View** | Scholars Rise | Bentham LA2 7FS

housing21.org.uk    

**Housing21**  
Extra Care Living



# WORLD'S BIGGEST COFFEE MORNING

**Macmillan Coffee Morning**  
**Saturday 30<sup>th</sup> September 2023**  
**10am – 12 noon**  
**Burton Village Hall**

Please join us and help us to raise money for this fantastic cause.

Coffee and delicious cakes plus a raffle, quiz and tombola. Catch up over a coffee and support Macmillan at the same time.

Christmas shoe boxes will also be available for collection.

Donations of cakes, raffle and tombola prizes all gratefully received.

Please message Caroline 07794 353054 or call Lynne 41334 for more info.

Thank you!  
Caroline Hastie & Lynne Lawson

**Temptations**  
Bentham

**31 Main St, Bentham**  
**015242 61868**

**A treasure trove of fabulous fabrics!**  
**Quilting & Dressmaking**  
**Water Resistant & Breathable**  
**Buckles, Webbing & Haberdashery**  
**Plus Knitting & Crochet**  
**Yarns & Patterns**

[www.temptationsbentham.co.uk](http://www.temptationsbentham.co.uk)  
[www.pennineoutdoor.co.uk](http://www.pennineoutdoor.co.uk)

New Rd, Ingleton, LA6 3FE - 01524242223

**Country Harvest**  
Where the Dales meet the Lakes

FOOD HALL CLOTHING  
COFFEE SHOP GIFTS & CRAFTS

Coffee shop Farmshop Butchery Bakery Gift Hall Clothing Hall Outdoor Living Cabin

[www.country-harvest.co.uk](http://www.country-harvest.co.uk) // Follow us on social media!

**MORE THAN JUST A FARM SHOP**

# Notes from an Unintended Naturalist August 2023

At the time of writing in mid July, the pairs of swifts nesting in my eaves and swift boxes have successfully incubated their young. The evidence is the daily neat and tiny deposits of faecal sacs, on the cobbles below. It is my cheerful small task to clear them away with an old toothbrush and water - a reminder of how scrupulously clean the parents are in ejecting waste from the nest sites.

In a few weeks, I may well see a small head peep out of its nest. The young birds will have practised their wing press-ups to strengthen muscles preparing for the next, maybe, four years of aerial flight. By early August the youngsters will be flying off to feed independently for insects which are high up. The juveniles will take to the air and rise and dive above the streets of Burton with the exuberance of teenagers, calling with their distinctive "screams" for the joy of being alive. Soon when they are just a few months old, they will fly directly south to their destination in mid-Africa. They have been recorded as making the journey in just a few days.

The instinctive navigational skills of these young birds, whose parents depart later, has been built into their DNA for millennia. Hopefully they will safely return next year and go their nest space and "bang" against it but will not breed for a few more years. Pair bonds are made before this however and this year's young might be nesting in 2027. Close encounters with some near casualties has been a privilege in past years. I am so indebted to Chris Thompson, a swift-enthusiast neighbour for a prompt rescue of two that tumbled out of their nest. With a ladder and his calm focus they were safely popped back in.



A young swift peeps out its nesting box

## **Rachel & Ali @ THE BARBER SHOP** **3 Station Road, High Bentham**

Monday 9.00 till 5.00  
Tuesday 9.00 till 5.00  
Wednesday 9.00 till 5.00  
Thursday\* 9.00 till 12.00  
& 4.30 till 9.00pm  
Friday 9.00 till 5.00  
Saturday 8.30 till 12.00

\*Appointments available Thursday mornings

Alison 07761 725744 Rachel 07851 464433



Wood+The Trees

Sam Watson  
Bentham  
015242 37728  
07789 901329

Tree Care and Forestry. Felling,  
Thinning, Reductions, Stump Grinding,  
Pruning, Hedging and Hedge Laying.



## Boon Weekend and Adopt a Grave in All Saints Churchyard

It was a pleasure to welcome so many people who helped us clear the burial grounds of excess vegetation, unwanted saplings and generally weed around the edges – and more! The grounds looked lovely for the July baptisms and wedding. Thank you to all who helped. We are planning another, Autumn weekend – possibly 29/30<sup>th</sup> September when the leaves have fallen. More details later!

One good suggestion which came out of the weekend is that some people in the village may wish to **Adopt a Grave**. As I walk around the SE burial grounds I find that I know many of those who are buried there, or at least their families, but I am aware that families have moved away and never visit the grave of their loved ones, in some cases there is no family left. If anyone has a few minutes to spare on a regular basis – would you consider taking responsibility for keeping a neglected grave tidy? If so, please email [all-saintscw@gmail.com](mailto:all-saintscw@gmail.com) or contact Cathy directly.

Thank you

Cathy Birtwistle

## The Piano Man

Christopher Bethell

Professional tuner,  
servicing and repairing  
upright and grand pianos

07817 162686  
[chrishethell137@gmail.com](mailto:chrishethell137@gmail.com)



## WILL HAMBLING

PAINTING & DECORATING  
INTERIOR & EXTERIOR

[WILL.HAMBLING@SKY.COM](mailto:WILL.HAMBLING@SKY.COM)

07858 572 336



Music in the Fells  
presents

## "Italians Home and Away"

*An evening of music and songs from the  
Italian Renaissance and Baroque eras  
performed on period instruments by*

## Mr. Simpson's Little Consort

**The Church of the Good Shepherd  
Tatham Fells  
Saturday 12th August at 7.30pm**

£15.00 including light refreshments  
Tickets from Jane Proctor (07508 981299)  
or Dawn Johnston (07712 087412)

The Burtonian has been pleased to help promote Concert & Cakes over the Years and wanted to investigate how these wonderful events came to Burton. One of the heroes, Christine Wardle, explains her part....

***Are you a keen musician yourself, Christine?*** Well, we always had music in the house. I had piano lessons and took up the 'cello at school, as a way of avoiding double games and the family obsession with cars. My Dad, Ken, (you will remember him coming to live in the Flat above the Shop) was a real petrol head, (tho' he was also organist at the Methodist Church here and very talented amateur pianist). My brother Malcolm (who lives in California) carried on collecting, restoring and riding classic speedway bikes.

***How far did you get?*** Only as far as the School Orchestra! But I was privileged to hear and meet the great virtuoso cellist Paul Tortelier.

And, as a result, I have always loved hearing music and am glad when I can find ways to share that love with other people. I was lucky enough to get a job with Royal Northern School of Music in Manchester and through that, met lots of the student musicians there. *You've worked on promoting a number of cultural and educational icons, I think?*

Yes, I started my career (based on a degree in French, German and Business Studies) working for the French national healthcare company Sanofi, representing the UK at conferences all over the world. My first presentation was to explain Red Nose Day, in French, to a bunch of Communications Managers in Paris!

And I ended up telling an American audience how Stockport Grammar School was founded in 1487, 300 years before George Washington founded the United States! But in between, I've also worked at Harewood House in Leeds, CancerCare in Lancaster, Giggleswick School and Turner's House in Twickenham. I am now a Trustee of the Lake District Summer Music Festival.

***So, did music take the place of cars and sport in your life?*** Not exactly! I was a Bellevue Speedway fan back in the day, a member of the MG Car Club and whilst at Stockport Grammar, I found myself explaining to the Wall Street Journal how lacrosse came to the UK as an English sport.

But my husband, Ian is a lifelong Man. United fan

And now he has started bowling again – which he loves! So now, it's me who gives our dog, Rocky, most of his walks.

***I gather that Rocky had a hand (or a paw) in you and Ian coming to live in Burton?***

Well yes, if you mean that he lay down in Leeming Lane and refused to budge till we agreed to move in! We had bought our house as a holiday cottage to escape from Stockport where we then lived. We chose this area because Ian has childhood friends who have lived and farmed at Leck for generations.



When Ian retired from pub management in 2014, Rocky “helped” us decide to move here permanently.

Through the RNCM, we found that we lived just up the road from the home of the late Chris Rowland and his lovely wife, Cathy. Chris was a world-renowned violinist and chamber musician and had been Head of Chamber Music at the RNCM and so Cathy and I had a mutual interest and connection with everything that went on there and the continuing output of wonderfully talented musicians. These brilliant people would always want a chance to perform and be appreciated.

As we moved here, a group was in the process of producing a Village Plan, through which we met Steve and Kate Vose, and found out that the Village was looking for more communal activity and use of its facilities. Cathy is herself a renowned baker, among many others in the village and she suggested that we could combine the community passion for making and appreciating delicious cakes with my connections to so many talented musicians at the RNCM. Our concerts in the Church would be funded by the generosity of the audiences and their appreciation of that combination. We just needed the administrative talents of Steve Vose to complete a team that has now provided 35 concerts with combined audience numbers upwards of 3,500.

I think the Village can be really proud of having created something special in Concert&Cakes. We get an audience from a wide area based on the reputation of our warm welcome, delicious cakes and music, and we give the students a great experience so they take a little piece of Burton in Lonsdale back to the RNCM and away with them into their future careers.

*Thank you, Christine!*



• www.bumblebeegallery.co.uk • 015242 98220 •

**ART GALLERY,  
HOME ACCESSORIES  
& GIFT SHOP**

**Bumblebee Gallery,  
Kirkby Lonsdale,**  
is a family run, independent Art, Home and Gift Shop. We are filled with a diverse and ever developing range of beautifully designed pieces, created by over 70 accomplished British artists and artisans. This includes local artists from right here in Burton in Lonsdale, as well as many from; Cumbria, Yorkshire, and Lancashire.



• 10 Market Street, Kirkby Lonsdale, LA6 2AU •



#### About Us

At DMS CARE our primary concerns are your wellbeing and that of those close to you. We aim to be the number one supplier of holistic domiciliary care and suppliers of medical equipment in Bentham, Burton, Ingleton and surrounding areas.

At DMS CARE we understand how difficult things can be and that's why we tailor our service to your requirements. We care, not just for our clients, but for those around them and they will be updated as much as you allow so that your family and friends are up to date with your condition. We understand how stressful not knowing can be.

07856 392 209  
Email David Senior at  
dmscareltd@gmail.com

Many of you will have been to All Saints church for Carol Services, Concert and Cakes, services and other activities. In the winter you will have been aware of the cold wind and noise caused by ill fitting windows and time expired secondary glazing. You will not have been aware of other window problems which the PCC deals with – jackdaws break the windows on the tower, bringing in debris and mess, during one of the recent lockdowns a jackdaw made a nest and laid eggs on the steps up to the bell ringing room.

Before Christmas 2022 one of the windows in the entrance narthex – 2400 mm (7½ft) in height, held together only by the leading between the panes, began to move in the wind. The church wardens had been trying for a while to find a suitable contractor to refurbish the bars which hold the windows in position and in January were fortunate to find a specialist company who were able to come up to do a survey of our windows. The windows in All Saints church have not been touched since they were installed (and most of them are held in by a wing and a prayer) and are held in position very precariously. None of the opening windows now open; few of the fixed windows are safely fixed.

All Saints is a grade 2\* listed building and any work which is done to the building has to be done by skilled craftsmen. The few firms who do this sort of specialist work are in great demand, for instance the company who do our roof work, although reasonably local, do much of their work in London. In their survey of the glazing in the church Lightworks have been very complimentary about the quality of the windows – in fact they comment on the three stained glass windows on the south wall as being of regional and national significance. We needed to call on them urgently in late April – the winds coming up the Lune Valley had dislodged the bendy window completely and it was bent into a U shape and hanging into the church. The figure that Lightworks came up with, to make the windows safe and secure, was over £40,000 (ex VAT) an eye watering figure.

The Church Council has applied to the Diocese to do this work and will be trying to find grants and raise the money needed over the coming months. If we can complete the recommended work, not only will the church continue to be a beautiful building, but it will be safe for worship and by reducing drafts through the ill fitting windows and increasing light transmission the PCC will be reducing the carbon foot print of the building.



**i.akrigg**  
CARPETS • VINYLs • RE-FITTING

**IAN AKRIGG**  
FRIENDLY & PROFESSIONAL ADVICE

☎ 07539626044    f /I.Akrigg/

**CALL FOR A FREE QUOTE & MEASURING SERVICE**



**GFP**

**Graham Fawcett Plant Ltd**  
Unit 3, Bentham Industrial Estate  
Bentham LA2 7NB  
**015242 62888 sales@fawcettplant.co.uk**

**GARDEN MACHINERY SERVICING & SALES**

Mowers • Chainsaws • Hedgetrimmers • Blowers

New **ALPINA** mower range now in stock  
**HONDA/ Briggs & Stratton** petrol engines  
**P/EX WELCOME** – Mowers to suit all budgets

## USEFUL WEBSITES ....

### Rural Bulletin

[www.rsonline.org.uk/](http://www.rsonline.org.uk/)

### Northern Gas Networks

<https://ngnceg.co.uk/>

### Allerton Waste Recovery Park

<https://wasteservices.amey.co.uk/where-we-work/north-yorkshire/>

### Community First Yorkshire

<https://mycommunity.org.uk/>

### The Bentham Line

#### Mondays to Saturdays

Bentham	0603	0935	1538	2040
Lancaster	0631	1006	1607	2114

#### Sundays (BUS)

Bentham	0718	1318	1918
Lancaster	0803	1403	2003

#### Mondays to Saturdays

Lancaster	0648	1046	1745	2131
Wennington	0711	1109	1809	2157
Bentham	0717	1115	1815	2202

#### Sundays (BUS)

Lancaster	0600	1200	1800
Wennington	0625	1225	1825
Bentham	0645	1245	1845

## Bus Service

### Service 583

Kleh.co.uk

#### Mondays to Fridays

To Bentham (from shopside)	To Kirkby Lonsdale, connect to Lancaster
10.09	6.49
12.09	10.26
14.09	12.26
17.14	14.26

#### Saturdays

To Bentham	To Kirkby Lonsdale, connect to Lancaster
10.09	7.59
12.09	10.26
14.09	12.26
16.09	14.26
	16.26

## Gallaber Farm

Holiday Cottage and Caravan Park

Cottage with stunning views sleeps 4

A 5 and a 6 berth static caravan for holiday rental

15 touring pitches with hook up points

For further details please contact Jennifer Sedgwick on 015242 61361 or visit our website [www.gallaberfarm.co.uk](http://www.gallaberfarm.co.uk)

## Holiday Cottage High Street, Burton in Lonsdale

Warm cosy well equipped cottage appointed to a very good standard.

3 Bedroom, Sleeps 5. Sorry no pets.

Weekly and shorter breaks are welcome. Discount for friends and relatives of locals.

For more details please contact Heather on 07540422531

E mail: [watts.rae2@gmail.com](mailto:watts.rae2@gmail.com)



## All Saints' Church News

### Sunday Services in August and September

August	6 <sup>th</sup>	8 am (Holy Communion), 11 am Joint service with Methodists
August	13 <sup>th</sup>	11 am (Holy Communion)
August	20 <sup>th</sup>	8 am (Holy Communion), 11 am (Morning Worship)
August	27 <sup>th</sup>	11 am (Holy Communion), 3.00 pm Baptism
September	3 <sup>rd</sup>	8 am (Holy Communion), 11 am Joint service with Methodists
September	10 <sup>th</sup>	11.00 am Harvest Festival led by the Methodist Congregation
September	17 <sup>th</sup>	8 am (Holy Communion), 11 am (Morning Worship)
September	24 <sup>th</sup>	11 am (Holy Communion)

### Other Services and Events in August and September

Stay and Play, our group for pre-school children (with parent/grandparent or guardian) meets on Thursdays in the Church Room from 9.30 am until about 12 noon. Our Party was held on July 13th and was our final session until we meet back in the Church Room on Thursday 7<sup>th</sup> September.

New families are always very welcome. There are toys and activities to entertain the children and tea, coffee and chat for the adults. For further information e-mail us on [allsaintscw@gmail.com](mailto:allsaintscw@gmail.com).

During the summer, look out for the Surprise Stall in the church porch. It will be there most weekends with a selection of bric-a-brac, jams, marmalades, garden produce. Payment for items is by donation and all proceeds will go toward the repair of the church windows.

### Opening All Saints to the village community

The Tower Room space in the church is available for exhibitions, many of you have visited the lovely exhibitions put on by the village Heritage Group. However we'd like to know any other ideas you have for encouraging villagers and visitors into the church building. The Garden of Remembrance is a lovely space for contemplation and has fabulous views over the village. The church yard and church building needs your input as volunteers to dust, polish, Hoover, weed and clear leaves during the year, you don't need to come on a Sunday! Email on [allsaintscw@gmail.com](mailto:allsaintscw@gmail.com) or speak to Cathy or Christine any time.

Prayers for the Parish Each Friday morning we normally meet at 10 am in the Church Vestry for a short simple time of Prayers for the Parish. Do feel free to join us for about 30 minutes.

Best wishes

Catherine, Church Warden at All Saints

## Our Worship Leader Cathy Rowland writes about her pilgrimage on The Camino Portuguese:

My pilgrimage this year saw me walking from Lisbon to Santiago in April and May on the Camino Portuguese. As ever I have been left with so many stories of people and places, much to ponder and an overall deep sense of fulfilment from having done it. Here's one story from early on as I headed north from Lisbon along the flood plain of the mighty river Tejo. Day two saw me en route to a small settlement called Valada. The choice for that day had been to do either a much-too-short 14 km walk or an exhausting 33km one. Each choice had its pros and cons but the 'too short' day won. I duly arrived in Valada and headed to check out the location of my hostel for that night which I knew would be closed for another three hours. This done, lunch was the next priority. I wandered back down the pleasant but not outstanding main street vaguely remembering that my guide book had called the place a 'quaint riverside village'. I dug out the book and the phrase 'a flood bank separates the village from the sandy beach' vividly leapt out at me. 'Sandy beach'? Where? There was no beach and no river anywhere in sight! Then the 'penny dropped' – the whole of the raised right hand side of the main street was, in fact, one enormous dyke stretching as far as the eye could see with a wide path along the top of it. At intervals there were also steps going up it. In my impatience to locate my hostel I had been blind to it. I duly headed up the nearest steps, looked and gasped – a scene of great pastoral beauty met me! The mighty river lay expansively stretched out before me, bounded by lush green woodland. There too before me was the fabled 'beach' and even a small cafe for lunch and a glass of wine as I waited for my hostel to open! All enhanced by not-too-hot sunshine and a gentle breeze happily pervading everything! This whole idyllic area was completely hidden from the rather ordinary main street I had walked down because of the sheer height and length of the dyke and the fact the side of the dyke as it ran down the road also blended with its surroundings so well and generally looked very 'ordinary' too. How nearly had I missed it! Undoubtedly had I chosen to do the long day I would have walked through Valada completely unaware that such welcoming beauty lay so close at hand!

Inevitably in the days that followed there will have been special moments and places that I did miss because of being too focussed on reaching my destination for that day, but the unexpected moments such as this one remain as precious and joyous memories. Now back home I try to cultivate being open to the 'unexpected', whether moments of sudden beauty and happiness but also open to the unwanted difficult situations which may turn out to be equally significant. I write this because, for me, they are usually 'thin places' where God is to be encountered if I only have the eyes and ears to hear and see and only when I take the time to consciously experience, react to and generally 'bathe' in the experience. Such experiences leave me, in small ways or large, not quite the same person as before, but richer and, beneath the normal ups and downs of life, more peaceful and more able to trust in this 'Higher Power'.

A longer talk on this latest Camino will probably happen at some point in the autumn for anyone who wants to hear more/ see photos (let me know if you're interested at [catherine.c.r.rowland@btinternet.com](mailto:catherine.c.r.rowland@btinternet.com)...date yet to be worked out!)

## Stay & Play.

We all enjoyed our final session at the playground and pavilion on Thursday July 20<sup>th</sup>, and it didn't rain! We meet back inside on Thursday September 7<sup>th</sup> from 9.30am. We want to say a final **Thank you** to the World War One Committee for donating funds to us. We bought the Wonderball Fun House which everyone loves to play with, some new books for our youngest members, a wooden farm, and finally a Brio garage which attaches on to our train set.

Thank you everyone!



*Everything for*  
\*Knitting\* Crocheting  
\*Sewing\* Felting  
\*Quilting...  
*...and all manner of crafting  
and creating.*

*Craftopia*

6 Main Street, Ingleton, LA6 3EB,  
North Yorkshire  
Tel: 015242 41221  
email: [craftopia.ingleton@gmail.com](mailto:craftopia.ingleton@gmail.com)  
[www.craftopiaingleton.co.uk](http://www.craftopiaingleton.co.uk)



## Valerie Hinde

Chartered architect and designer

---

Domestic extensions  
Refurbishments  
Conservation  
Listed buildings  
Planning Applications  
Building regulations  
Community  
Commercial

\*\*\*\*\*

49 Robin Lane, Bentham, LA2 7AG  
Tel 07503 731818  
015242 61407  
[valeriehinde@gmail.com](mailto:valeriehinde@gmail.com)  
[www.valerie-hinde.co.uk](http://www.valerie-hinde.co.uk)

## PROFESSIONAL HOUSE CLEARANCE SERVICE

FULL AND PART CLEARANCES  
UNDERTAKEN.

HOUSE, GARAGES AND ANY  
OUTBUILDINGS AS REQUIRED.

REASONABLE RATES.

TRUSTWORTHY, EFFICIENT AND  
ENVIRONMENTALLY AWARE.

JUSTIN MERRY 07976 357560

## J. LAWSON

---

### ELECTRICAL CONTRACTOR

14 MANOR CLOSE 07786 222566  
BURTON IN LONSDALE 015242 62916  
LA6 3NE

[jlawsonelectrical@gmail.com](mailto:jlawsonelectrical@gmail.com)