



The **Burtonian**

Burton in Lonsdale
Village Newsletter *Number 99*
August / September 2020

PRICE: 25p / FREE to residents

As we move into August, desperately hoping for summer to return and reflecting upon the last few months, dare we start to believe

that the worst is behind us and we can look forward to a return to a more normal way of life?

There is no doubt that face-masks are here to stay for some time yet, but judging by the innovative and colourful masks that many are sporting, it is fast becoming a fashion accessory, which helps to take the sting out of having to wear them.

In this issue, we have a poem by Jennifer Sedgwick, giving her take on 'Lockdown', so we thought it would be a good idea if we could encourage more of Burton's literary talent to send us their poems/stories of lockdown, that we can publish in the next copy of the Burtonian, which will be the 100th issue.

You've got another 2 months to think about it so no excuses!

David & Marilyn

burton.news@gmail.com

Village Websites ...

**www.burton-in-lonsdale.net
www.burtonshop.co.uk
www.burtonsports.co.uk
www.burton-in-lonsdale-village-hall.co.uk**

There are various village Facebook pages, the Shop, the Village Hall, Sports, Stay & Play, the Punchbowl



BULL FARM APPLE JUICING DAY

OCTOBER 17TH 2020, 10am - 4pm
(covid-19 permitting)

Come and get your apples juiced!



Maximum 8 Kg of apples per person. Please bring apples washed and halved. Bring your own bottles (plastic drinks bottles will work fine).

No apples, no problem. Juicing demonstrations throughout the day.

In case of social distancing required, please see sign-up sheet in village shop from October 1st 2020.

Free event.

Bull Farm, 11 High Street, Burton in Lonsdale, LA6 3JU.

Burton Heritage Group was formed to record Oral History and to preserve and catalogue items of Historical interest that have been gathered over many years. Burton has a proud history and many booklets and articles have been published on all aspects of village life down the years. Two new items have recently been purchased for the Village. The first a WW1 Victory Medal with ribbon that was awarded to Private Hugh Strickland of the Royal Warwickshire Regiment who died on July 30th 1916, one of the first Burton men to die in action. Hugh is buried in Lonquenesse (St Omer) Souvenir Cemetery France. The medal came with copies of his war records.

The second purchase was a letter addressed to John Bateson, Potter, Burton-in-Lonsdale, dated 6th June 1845 with a Queen Victoria Penny Red stamp.

The letter was sent from Solicitor Messer Gregg in Kirkby Lonsdale, regarding possible legal action brought by his Brother William Bateson in relation to an injury he sustained and for John depositing an amount of rubbish into Williams Clay Pit. This little letter was posted back to Burton 175 years later, amazing! Burton has a fascinating History, just don't press the delete button.

Jane Burns.



GUY WOOLNOUGH- 24/2/50 - 26/7/20

Guy and I lived in Burton, in the centre of the village at Hill Cross House, for 44 years. Guy loved living here and exploring the surrounding areas. He knew intimately its high-ways and byways through his love of running, cycling and walking. He will be remembered by many as a vivid splash of colour running through a farmyard, a footpath, or exploring an adventurous new route.

He always got a thrill, when returning home to Burton, when the hills came into view, Leck Fell, Gregareth, Ingleborough and Whernside. Ingleborough in particular as the backdrop to both the village and Guy's weekends.

He truly relished village life from organising the gala race, parish councillor and running the first post office from the village shop. Best of all he loved bringing up a family here, benefiting from all things Burton, the friends, the wonderful walks and village events.

The family would like to thank everyone in the village for their great support over the last 18 months, compassionate and encouraging conversations, and the many kindnesses all of which demonstrate the great community that is Burton which he loved. As Guy would say, everything is better in Burton.

Marion and Family

Lune Valley Swimming Pool to re-open soon..

LVCS is delighted to announce that the Lune Valley community swimming pool in Hornby is scheduled to officially re-open with a new timetable on Monday 31st of August.



In the meantime, despite being regularly maintained and monitored during lockdown, work is required to bring the pool up to the high standards necessary to provide a safe environment for all and to apply staff training updates and social distancing protocols.

In view of this and subject to current legislation and official advice we are hopeful that the pool can be opened for pre-booked public use during the last full week in August, prior to the official re opening, running with lower numbers and/or private bookings in order to raise revenue and test operational efficiency.

Please help us get our community pool back in the swim, we'd love to see you!

For further details, bookings etc. please check-

Website- www.lunevalleypool.com; Facebook - lune valley swimming pool.

Email poolmanager@lunevalleypool.com

Direct line pool telephone. (01524) 805666.

Lune Valley Community Society Ltd Charity no 1176086

The Rotary Club of Lunesdale

As each day goes by we see and hear of so many acts of kindness happening throughout the Lune Valley. It seems that everybody is keen to give a helping hand where needed in these trying times. Daily I tell myself how lucky I am to live in our beautiful part of the world. I know I am not alone in that sentiment.

Rotary continues to meet online with President Dave carefully adhering to a strict agenda. David Simpson, a Past District Governor, gave a talk to the Club on 21st May bringing us up to date on the campaign to rid the world of Polio. Just Pakistan and Afghanistan are the only 2 countries which still report a very few cases. Our speaker on 28th May was Debbie Vance who lives in Ucluelet on the outer West coast of Vancouver Island and her subject was Rotary Graphics. A great example of which is the RI Presidential Theme for 20/21 "Rotary Opens Opportunities". I can personally vouch for the truth of this statement when I think of the numerous opportunities I have benefitted from as a result of joining the Rotary Club.

Club Assembly was held on 4th June when we were pleased to be joined by Assistant District Governor John McGill from Furness Peninsular.

On June 25th I shall assume the role of Club President which I look forward to and hope that I can live up to the standard set by all my predecessors.

Stay well and stay safe.

Lilian Barton

This year it may not be the **World's Biggest Coffee Morning** as it is unlikely it can be held indoors with sufficient spacing. However I shall be collecting outside the village shop on 25th and 26th September, so that I can send a contribution towards the 'at the moment more

necessary than ever' care that Macmillan provides for cancer sufferers and their families. If you would like to donate, as you have done so generously for the last 20 years, please find me! or alternatively leave a donation at the shop with my name on it.

Thank you all so much, and take care.

Jill Peel



PLANT SALE

A big thank you once again to all the people who bought plants from me. I made £190 for Church Funds.

Mary Edmondson

STONeworks BUILDING SERVICES

All aspects of stone building
Including Walling, Repointing,
Restoration, Pillars and Patios
Free Estimates
Dan Evans 07904902503

SMART SIGNAL
Aerial & Satellite Installation & Repair
Wi-Fi & Home Network
CCTV Installation

Ben Fawcett
Frounts Cottage, Duke Street,
Burton In Lonsdale
015242 62017 – 07950028622
smartsignal@outlook.com

WILL HAMBLING
BURTON IN LONSDALE

PAINTING & DECORATING
INTERIOR & EXTERIOR

07858 572 336
015242 80112
WILL.HAMBLING@SKY.COM

 Sam Watson
Bentham
015242 37728
07789 901329

Wood4The Trees

Tree Care and Forestry. Felling,
Thinning, Reductions, Stump Grinding,
Pruning, Hedging and Hedge Laying.

TOTAL WELLBEING
Beauty & Bodywork Salon
Sarah M Malkinson
Sports Therapist IIST IIHHT

Sports/remedial massage, Aromatherapy,
Reflexology, Indian head massage, Facials,
Eyelash & Brow tinting,
Male/Female waxing,
St.Tropez express spray tan,
Hopi ear candles,
Sun Shower.

11 Station Road, High Bentham
Tel. 015242 63223
Follow us on facebook

Country Harvest
food clothing gifts coffeeshop



Butchery, bakery, food hall, cakes, pies, deli,
fresh fruit and veg. Open seven days a week.

 www.country-harvest.co.uk  LA6 3PE  015242-42223

All Saints Church Clock

Thank you to everybody who has put money into the box in the shop, to go towards the repair of the church clock. A special thank you to the Gala Committee and the individuals who have given generous cheques, we have £670 so far. Please can we get to £1000? Our clock specialist has quoted £2376 to fit the new motor, so the box will stay in the shop until Monday August 4th when we will count the total raised from the village.

Thank you.

Another Local Landmark Disappears

By our Environment Correspondent

As the village telephone box was quietly demolished and transported to who knows where the uproar could be heard from Chapel Lane to the Village Green and a protest meeting would have been held in the Village Hall if anyone could have found the key. A replacement by a handful of grass seed is just not acceptable. Such strong feelings are not surprising given the legends that have grown up in and around the famous Red Box. It is outrageous that the history created in those three walls and a door can be so cruelly swept away. Apart from being a favourite meeting point for many years, it was also the scene of many a romantic assignation!!! Moreover people also used to make 'phone calls from there right up until the first 'phone lines were installed in houses in 1990 and beyond.

Our message to whoever did this is - it just won't work in the long term. However, what is done is done and a number of people, including our chief investigative reporter, who has been tireless in her efforts in Florida, Barbados, Monaco, Paris and Sicily, have been trying to discover the identity of the owner of the plot. The Sultan of Brunei, Sir Richard Branson, Sir James Dyson, the Duke of Westminster and Kim Kardashian amongst others submitted plans ranging from a golf course to a health spa to a luxury hotel. All these tycoons were seeking to gain a foothold in Scotland and all have now sacked their research departments. Fortunately most of those people have found jobs with the Civil Service researching what we do next to prevent another outbreak of COVID 19. Thank goodness we're in safe hands.

It appears that a local organisation has outbid them all and made a number of suggestions for the site. The first one was a water fountain but it was felt that this would be unfair on all those villagers with incontinence issues (about 60% of the adult population) as it might aggravate their problems. Another idea was to install a gin and tonic fountain but the Police objected on the grounds that there was quite enough frivolity when the Parish Council or the Women's Institute met in the Village Hall. The most realistic proposition was for a chocolate fountain but the Village Shop opposed this idea as it would have a dramatic negative effect on sales. So we wait with interest to discover what the new custodians will be doing to enhance the village environment – don't be surprised if a few flowers appear there, as if we haven't got enough of them around the village already.



Following discussions with the band and the council, we have decided to postpone the Big Burton Bash until the situation becomes clearer. Sorry Folks

Watch this space
Andy Ive

FILM NIGHTS AT THE VILLAGE HALL

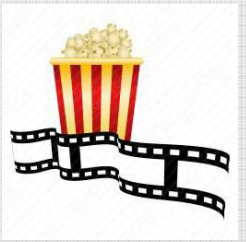
Recent government guidelines indicate that with the correct procedures in place it will soon be possible to re-start the screenings of the Film Nights in the Village Hall.

In the last issue of the Burtonian we asked for your opinion one way or another as to whether you would like these screenings to start up again but received hardly any feedback at all, but would like to thank those who did get in touch, it was much appreciated. With this in mind and taking into account the extra work and arrangements that would be necessary to stage these events, together with the numbers needed to cover the costs of the license fee, we have decided to shelve any plans to restart the Film Nights for the foreseeable future.

Should the situation change and it is felt that these evenings can be successfully staged once again (assuming there is the demand), we will be happy to look into reinstating them.

We are very sorry to disappoint those of you who wished to go ahead but in view of the current difficulties as outlined above, we really cannot find a way forward at the moment.

The Film Committee



Recreation Field - Play Park and Outdoor Gym

The Play Park, complete with the latest additional piece of equipment for the younger ones, along with the Outdoor Gym Equipment, is now fully open for use. There are Covid 19 restrictions, which are highlighted on notices at both areas.

Please ensure that you comply with these instructions when using the equipment.

Here's hoping for some lovely Summer weather In August and September so that these areas can be fully enjoyed.

Mike Illsley



CHANGING AND CHALLENGING TIMES

Written by Andrew Lay of Lay of the Land Garden Centre and café in Settle.

A small family business's perspective of the current economic climate as it try's to navigate the present health crisis and all the uncertainty that it has brought.

Sitting here at my desk, in what would normally be the cafe, looking out through the rain streaked window at a sodden plant area being buffeted by unseasonably high winds, I finally get the time to reflect on everything that has changed this year.

Coming into 2020 I had high hopes of a good year. The nursery was establishing well with the polytunnel finally becoming more than a distant dream. The weather was exhibiting its usual contrariness, but that was ok, spring was on the way, and we all love spring. These days I spend my life wishing for spring, it seems, then suddenly bish, bash, bosh it's arrived and gone again in little more than a flash. This year was the same, but in one very significant way completely different.

Coronavirus. No-one was ready for it. No-one understood it. It was a completely new experience for all of us, and heralded changes to all of our lives.

Usually on a wet and windy summers day like this, when even the hardiest of gardener's think twice about venturing out, we have the cafe to bring people in. At this time last year it would have been full of people, the delicious smell of Jimmie's cooking, banter and laughter. Today it has me in it, staring out at the rain.

We don't yet know when we will be able to re-open; certainly not until we believe it's as safe as it can ever be for both our wonderful customers, and of course our staff. Having previously made a virtue of being a pocket sized establishment we now long for more space to do things in, to make reopening the cafe a viable option. We have plans to sell Jimmie's bakeware on a takeaway basis, via click and collect, and we'll look at the viability of takeaway coffee's and teas for now - but it's not the same, especially on a damp and dreary day like this.

On the other hand, the garden centre has kept going, largely thanks to the incredible loyalty shown by our incredible customers, and the tremendous attitude displayed by our tremendous staff, and we thank you all from the bottom of our hearts. From lockdown day one we started home deliveries, accepting orders by phone, e-mail and Facebook. We built our web shop in about six weeks after thinking about it, planning it, and failing to do it for the previous six years. Massive thanks to Peter and Jimmie for managing that between them.

We managed our plant supplies well, largely due to the excellent relationships we've built with our suppliers, and our policy of using smaller local growers wherever we could since opening. Growing more of our own has also helped, and helped to reduce our carbon footprint through zero travel miles. Thanks for your support, your understanding, your patience and your many, many words of kindness. I'm not sure how the world will actually be when we finally emerge from the shadow of the virus, but for now I actually think it's made us into stronger, more resilient, more patient people.

And there is always next spring to look forward to!

H & M

CRAFTSMEN

KITCHENS | BEDROOMS | COOKSHOP



FREE Design Service
Large Showroom | Open 6 Days

Ingleton | North Yorks | LA6 3NU

015242 41535

kitchensandbedrooms.co.uk

butler interiors

Designers, suppliers & installers
of quality German kitchens.

Call in at one of our beautiful showrooms in
Lower Bentham or Kirkby Lonsdale

Butler Interiors
Low Mills
Mill Lane
Low Bentham
Lancaster
LA2 7FL

015242 63388

Next125 Kitchens
Lane House Business Park
Kendal Road
Kirkby Lonsdale
Cumbria
LA6 2HH

015242 37747

www.butlerinteriors.co.uk



Healthy Pet Club

PUPPY & KITTEN PLANS



01729 823538

www.daleheadvetgroup.co.uk



Ofsted rated us Outstanding in all areas

Open 7.30am – 6.30pm

- 30 hours free childcare for eligible 3 & 4 year olds.
- 15 hours free childcare for eligible 2 year olds.
- Modern facilities and a friendly traditional atmosphere.
- Flexible opening hours to cater for most needs
- Dedicated Baby facilities.
- Holiday club available during all school holidays.

1 Station Road

HORNBY

T: 015242 22288

E: info@hornbydaynursery.co.uk

Call or email the nursery to discuss your individual needs or to arrange a visit.

All Saints' Church News

Sunday Services in August and September

August	2 nd	11 am Family Service
August	9 th	11 am Morning Worship
August	16 th	11 am Morning Worship
August	23 rd	11 am Morning Worship
August	30 th	11 am Morning Worship

September	6 th	11 am Family Service
September	13 th	11 am Morning Worship
September	20 th	11 am Morning Worship
September	27 th	11 am Morning Worship

At the present time, holding the 8 am service presents difficulties, but it will be reintroduced as soon as practical and notices will be posted around the village.

Other Services and Events in August and September

Stay and Play, our group for pre-school children (with parent or guardian) meets on Thursdays in the Church Room from 10 am until about 12 noon.

Depending on the state of the pandemic and government and church guidance we hope to restart on Thursday 10 September and will post notices around the village.

New families are always very welcome. There are toys and other things to entertain the children and tea, coffee and chat for the adults. For further information e-mail the church wardens on allsaintscw@gmail.com

Friday morning prayers

Each Friday morning we normally meet at 10 am in the Church Vestry for a short simple time of **Prayers for the Parish**. At present this prayer session is suspended and we will post notices when the prayer session recommences. Do feel free to join us for about 30 minutes.

Ringin' and Cryin' Out for Peace 15 August 2020

The 75th anniversary of VJ Day will be marked by our bell ringers at 11.10 on VJ Day by the tolling of a single bell 75 times. This anniversary will be marked throughout the country in the same way – wherever you are at the time – you will hear the bells of a local church ringin' out for peace.

Keep safe in these difficult time, Best wishes
Catherine and Christine, Church Wardens at All Saints

And from Vicar Denis ...

A few years ago we did a tour of central Italy. During this trip we visited the Monastery of Monte Cassino, founded in the 6th century. How it was established is a story which could mirror the times we are going through now. It was founded by Benedict who was a Roman nobleman in the days when Rome had lost its empire and faced several barbarian invasions. Benedict started life as a student but became disenchanted with this lifestyle. He went into self-imposed lockdown. He never left the cave he had moved into and on fixed days a monk brought him food, putting it in the mouth of the cave, announcing his presence and then leaving – not unlike our experiences with Burton Shop deliveries?

However, in a way, that was the easy part. After three years his lockdown ended and Benedict became the Abbot of a nearby monastery. Meeting and being with others was difficult for him. Relationships were hard to restart. Often Benedict wished to go back to his cave, especially when he was nearly poisoned by rival monks! However, he persevered and went on to found the Monastery at Monte Cassino.

What Benedict had and possibly what we need today are qualities of resilience for our own entry back into a world strangely changed by Covid19. Resilience is about the capacity to bounce back following adversity. Terms such as lockdown, social distancing, bubbles and furloughing now have new implications. As a community we have come through a challenging time and there still may be challenges in the future. Resilience will be essential in the times to come.

Resilience for the believer comes from understanding and accepting the immensity of the love revealed in Jesus. Jesus encourages his followers to pray and receive the Holy Spirit to help us through life. He promises to be with us in all the ups and downs of life.

“So, do not fear for I am with you. Do not be dismayed for I am your God. I will strengthen you and help you. I will uphold you with my righteous right hand” Isaiah 41:10

Rev Denis

Covid 19 and the Village Hall.

The Village Hall is ready for use by a small group, eg table tennis. There is a Hall Risk Assessment on the noticeboard and signage indicating no kitchen or main toilet use. Users must have carried out a risk assessment for their own activity. Hand sanitiser is available at 2 points and antibacterial spray is available for cleaning equipment. Only the Disabled Toilet is available for use. Paper towel is available by the sink and should be disposed of into the bin provided. All areas such as switches and door handles in the hall must be cleaned after use.

At present, any bookings taken must be 72 hours apart.

Ruth Gill

Settle Photographic Group

Covid-19 is not going to stop Settle Photographic Group from holding its twelfth Annual Exhibition of members' images this year, but it will be online only. You can see all the photographs on the SPG website from 1st - 31st August.

Go to www.settlephotos.org , press a link and you will be there. Enjoy over 70 photographs covering all sorts of subjects from wildlife, the countryside, trains, humour and much more.

Gill Pinkerton



Derwentwater— Nick Burton



Frosty morning Littondale—Ian Hughes

Reflections at Leeds Station — Alan Ward



Post Industrial - Yvonne Fairclough



Aquilegia - Gill Pinkerton

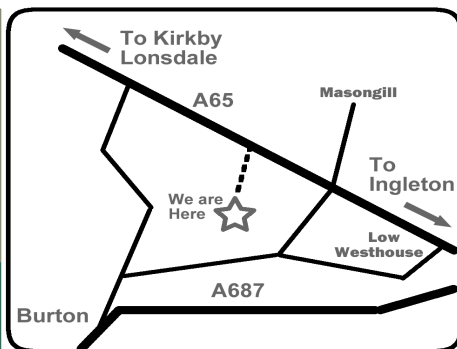
Come on in - Harry Pinkerton



Chalybeate Kennels & Cattery



Pet Food & Supplies
015242 41120



BRAND NEW HEATED KENNELS HEATED CATTERY

- ALL IN A LOVELY COUNTRY SETTING
COMPLETELY REFURBISHED SHOP
SELLING ALL PET FOOD & ANIMAL SUPPLIES
DROP IN, OR TELEPHONE RACHEL OR CHRIS

Full Days Available!

Happy Days at **Busy Bodies Pre School**

All 3 to 4 year olds can access 15 hours per week of free early years entitlement. Some 2 year olds are also eligible if criteria met.

Session Times
Monday, Tuesday & Thursday

Morning Session - 9am-12.30pm - £14.00 (includes lunch period)
Afternoon Session - 12.30pm - 3pm - £10

Full Day - £24.00

(A school lunch can be provided upon request for £1.10)

Busy Bodies Pre School,
c/o Melling St Wilfrid Church
of England Primary School,
Lodge Lane,
Melling,
LA6 2RE.
015242 21538 Ext 2



Bay Vets

"The Community Vets"

Inspiring trust, passion and care
to deliver excellence to pets and
their families.

Lancaster 01524 32696
Morecambe 01524 410867
Milnthorpe 015395 62770
Caton 01524 770615

24 hours emergency service

info@bayvets.co.uk
www.bayvets.co.uk

MEMORIES OF LOCKDOWN 2020

By Jennifer Sedgwick

My Memories of Lockdown

March 23rd 2020 Lockdown has begun

It really doesn't sound like a basket of fun.

Stay at home except for one hour a day,

When you could go for a walk but not too far must you stray.

The weather was glorious with sunshine & blue skies,

The countryside looked beautiful, no rain at all, what a surprise!

No traffic on the road, no planes up above,

The only sound we could hear was the birdsong we love..

Shopping was a problem, shelves were stripped bare,

No loo rolls or flour & queues everywhere.

Our little village shop was a blessing for all

With volunteers delivering after a simple phone call.

There were great takeaway meals from the Punch Bowl each week

And always a laugh with Heather & Mick.

Every Thursday night we clapped hands out in the yard

For our special NHS who were working so hard

The clapping was followed by music each Thursday

Provided by Burton's very own resident DJ.

The emergency services drove by with their sirens blaring

As a tribute to those who are constantly caring.

VE Day was celebrated with afternoon tea,

Then more lovely music played onward from three.

Rainbows became a symbol of loving & care

They appeared on windows & doors everywhere.

Pebbles were painted & left on the lane

Encouraging children to walk there again.

The five o'clock briefing became regular viewing

But the graphs & the figures became more & more worrying.

So many families devastated each day.

We wish that this virus would just go away!

No meetings with families, no grandchildren's hugs,

So much isolation was caused by these bugs.

Schools are all closed so home schooling starts

Leading to tantrums & breaking Mums' hearts.

Sums are quite tricky & phonics are hard,

The children would rather play out in the yard!

Church & Chapel are closed so no Sunday meetings ,

But we can watch services online in our own comfy seating.

Thank goodness for phones & computers to keep us in touch

With family & friends we are missing so much.

Holidays cancelled, plans put on hold
' Maybe next year' we are constantly told.
The garden looks good, it's never had so much care
And the lawn gets cut much more than our hair!
The salons are closed & our hair looks quite grim
So out come the clippers for a tentative trim!!
Time for jigsaws & crafts, for knitting & sewing,
Even quizzes & meetings on Zoom! These new skills keep growing .
Most days we mention how lucky we are
To live in this place where trouble seems so afar.
Beautiful scenery, glorious views
Not stuck in the tower blocks we see on the news.
The farm work goes on, no furloughing here,
So much work to be done at all times of the year.
Now Lockdown is easing, the traffic is back
And the countryside again is under attack.
Crowds are converging & you would not believe
How they ruin our beauty spots with the litter they leave!!
So maybe Lockdown wasn't always too bad
Some days we were happy, some days we were sad.
Without all the pollution the earth breathed again
But please don't let us have to go through it again!!

RE-OPENING OF SETTLE SWIMMING POOL

Settle Pool will re-open on Friday August 7.

Like other pools across the country the community pool in Settle, which is used by many people from Burton, had to close in March as the coronavirus lockdown came into force.



Indoor pools have been allowed to open from July 25, but there are still restrictions in place and it has not been easy drawing up plans to ensure that swimmers and staff are coronavirus safe. All sessions will need to be booked in advance. The number of swimmers is strictly limited as are the sessions. Changing and showering facilities are very different.

Further details of sessions and booking arrangements will be published on the pool website:

<https://www.settleswimmingpool.co.uk>

TERRIERS JUNIOR FOOTBALL MOVES TO BURTON

For Season 2020/21 the Caton Terriers Junior Football Club will be playing their Home Matches on the Recreation Field in Burton on Sunday Mornings. 3 Terriers teams will be competing in the Lancaster and Morecambe Service to Youth League at Under 9s (September Year 4), Under 10s (Sept Year 5) and Under 11s (Sept



seems like a natural development for the Club as many of the children come from the Rural Districts North of Lancaster. However, as the Club have built up a great reputation for prioritising a safe and fun environment where the youngsters can enjoy their football, this has meant the Terriers have also attracted players from as far afield as Overton, Morecambe and Bolton-le-Sands. The hope is that the Club can put down roots on the Recreation Field and can continue to grow with local support.

The 2020/21 season will be one of transition for the Terriers as they look to see if the move to Burton will be viable in the long term. However, having recently hosted a very successful end of season Presentation event on the Recreation Field, they approach the new season with great hope and positivity. The Terriers will be sticking with the Caton name for this season but hope to find something more befitting of a new Lonsdale home if the move proves permanent.

The Terriers hope to find a welcome in the Burton Community and will encourage any enquiries from keen young footballers from the area. The move away from Caton has meant that a number of volunteer helpers can't now assist on Sunday mornings so the Terriers are particularly eager to hear from anyone who'd like to Referee or run the Line at a Junior game in Burton, even on an occasional ad hoc basis. Please check out the Club's activities and message via their Facebook page. Alternatively, contact Club Secretary Dave Kitchin on 07968288765 or email caton.terriers.jfc@outlook.com with any enquiries.

Dave Kitchin, Caton Terriers JFC - Secretary, 07968288765



Rachel & Ali @ THE BARBER SHOP

3 Station Road, High Bentham

Monday 9.00 till 5.00
Tuesday 9.00 till 5.00
Wednesday 9.00 till 5.00
Thursday* 9.00 till 12.00
& 4.30 till 9.00pm
Friday 9.00 till 5.00
Saturday 8.30 till 12.00

*Appointments available Thursday mornings

Alison

07761 725744

Rachel

07851 464433



Langcliffe
Kennels & Cattery

Top quality, professional care for your
cats & dogs in our safe, comfortable
& clean purpose built facilities

- Open 7 days -

tel. 01729 822393

email: info@langcliffekennels.co.uk • web: www.langcliffekennels.co.uk

Howsons Lane, Langcliffe, Settle, North Yorkshire, BD24 9NG

J. LAWSON

ELECTRICAL CONTRACTOR

14 MANOR CLOSE 07786 222566
BURTON IN LONSDALE 015242 62916
LA6 3NE

jlawsonelectrical@gmail.com



**Pennine Outdoor
Fabrics Ltd**

*** NEW IN ***

Organic Ventile®

Please see P81 on our website for information

www.pennineoutdoor.co.uk

Mon - Fri 9:30 am - 12.30 pm
On-line or to collect at door only



Valerie Hinde

Chartered architect and designer

Domestic extensions

Refurbishments

Conservation

Listed buildings

Planning Applications

Building regulations

Community

Commercial

49 Robin Lane, Bentham, LA2 7AG

Tel 07503 731818

015242 61407

valeriehinde@gmail.com



MARK WATSON

HOME & GARDEN MAINTENANCE

Digging, fencing, hedge trimming, mowing,
paving, planting, power washing, rockeries,
rotavating, seeding, spraying, strimming,
turfing.

07759680938

07759680943

Low Bentham

015242 62038

Demolition, dry lining (plaster boarding),
insulating lofts, pointing, rendering,

Telephone: 015242 - 61557

W. H. HAMBLING **PAINTER & DECORATOR**



GRETA BANK
BARNOLDSWICK LANE
BURTON-IN-LONSDALE
CARNFORTH
LANCASHIRE
LA6 3LZ

Notes From an unintentional Naturalist –July 2020

Last week I was sorting a corner of the wild part of the garden by the field that runs down towards the river Greta and looked in the nettles (important food for many butterfly larvae) and heavenly blue meadow cranesbill to see if there was any sign that the hedgehog house and tunnel going under the fence had been used. I was excited to see a black 5cm neat dropping nearby. A hedgehog had been in my garden and enjoyed his meal of earthworms.

My sense of connection with nature, living here is becoming normal. The smallest observations of an outcrop of fungi in the woodpile, the sight of the shy delicate tree creeper working the insects on the bark high up on the apple tree, coming face to face with the little black toad under a plant pot, and the sight of the person walking down the steep field on the Bentham road with a long handled scythe around his shoulder; these are some of the examples that come to mind in the last few weeks. For someone who had to work in a tight urban environment for many years, these rural observations fill me with pleasure.

This summer, hearing and seeing the young swifts screaming happily to each other as they swoop and dive up and down the Burton streets at incredible speed is something to marvel at. On a clear evening it is an experience to enjoy. It will soon be silent again.

This evening was no exception-the sun was still hot and the skies clear so our swifts were making the most of it. One of them in a blink of an eye shot into its gap in the eaves. I watched to see if it re-appeared – was it the parent feeding still – surely not; more likely one of the youngsters having a breather after flexing those developing wing muscles. With the amount of wet dull days we have had recently, our summer residents don't hang about, they will fly as far as they need to find the dryer conditions where their flying insect food is plentiful. And bring back to feed their young.

The Sedbergh couple, Tanya and Edmund Hoare, who have done so much to encourage the swift population in the area, putting up numerous swift holes in their modest house overlooking the Howgills, giving illustrated and interesting talks about a swift's migration from South Africa here and back again and working with the Church authorities to have a large number of small contained areas in St Andrew's Church spire where the swifts could safely nest without leaving any mess or damage, had convinced me to do my tiny bit.

Last year I put up two RSPB special swift boxes for the returning breeding couples to occupy. It is of course the only time swifts ever land. Their tiny legs and feet have developed for streamlined flight-not perching – if you think you see them on telegraph wires - they are not swifts! Likely swallows or martins - quite different species to *Apus apus*, the swift.

And so I waited for the late spring arrival of the swifts again. Two pairs used gaps in my eaves last year – that I thought might approve of new clean airy purpose-built des.res.

But when the incessant chatter of sparrows popping their heads out of each hole this April, a pair of starlings taking squatters' rights behind the boxes and leaving their inky evidence daily on my doorsteps, I realised I should have blocked the holes up until late Spring. The swifts came eventually and just squeezed in to last years quarters ... the noisy

sparrow neighbours they just ignored.

From the videos the Hoares showed of young swifts who are fledging, you can see that they practise sort of “wing press-ups” in the nest space to build up their flight muscles. Unlike sparrows who don’t go far from home, swifts will cover hundreds of miles in a day and preparing for the big migration back to South Africa for a warmer winter; they have to feed up and be in top form.



I was fortunate to have held a young swift two summers ago. A youngster had misjudged its flightpath from the eaves and crash landed at the back. Alive but stunned, it allowed me to pick it up gently to put into a cardboard shoebox in which I had hastily made perforations in the lid and lined with

straw. I gathered up some dead flies from the windowsill – in case they were of culinary interest - and popped them in beside the beautiful blueblack small creature who looked up at me unafraid. I found a pipette and filled it with rainwater and it opened its mouth to let me put a few drops in. Then I left the container with its patient in the shed out of predators’ way, to recuperate from its shock.

I went to sleep that night preparing myself realistically that I might find a small corpse in the shoebox the next morning. Got up, went to the shed and gently lifted the lid. Little swift looked at me unblinking with its bright eyes and made wing movements. I gave it a few more drops of water.

I rang up Kirkby Lonsdale Veterinary Practice and the young vet on duty said that if I came immediately, he could fit me in before his first appointment. Just after 9 a.m., the young man was examining the little bird. He said it was his first time seeing a swift close to. How rare for a human to have the chance to care for a bird that lives its life totally on the wing, eating, sleeping, flying immense distances across the globe, mating and only still when nesting for that brief period in the eaves, if they haven’t been blocked up hermetically as modern developments unnecessarily tend to be.

He lifted one wing carefully out extending it fully, then the other and commented that all was well - it had developed its flight feathers. But there was something about the way the little bird held its head. We both knew then. He said there was nothing he could do as there was likely irreparable neurological damage and it would never fly again. The bird looked into our human eyes who were so concerned. Still. Trusting.

The hard part of any vet’s job must to end an animals life when nothing else can be done. He was as gentle as could be taking the box away to do what he had to do. He thanked me and I thanked him. There was noisy commotion suddenly outside in the waiting room as his first official patients and owners came in.

No casualties in this years’ swifts to report. By the time this is printed, the current Burton swift population may well be on their long haul flight back to the warm winter of Southern Africa.

DAMAGE AT THE ORCHARD

We are very lucky in this village to have a facility such as the Community Orchard and Picnic Site, created over the past three years by Burton PALS WITH TROWELS together with the help of a small group of volunteers. Its use has increased enormously this year, when the weather permits, and it is wonderful to see so many people enjoying this amenity, families, walkers, community groups and even swimmers, to name but a few, and in the main the area is well looked after and respected by all who use it.

Unfortunately, this is not always the case. I was walking there a few weeks ago and discovered that a couple of the stakes placed in the ground as support for the young fruit trees had been damaged. These stakes are not flimsy pieces of wood, but substantial and strong and I cannot imagine for the life of me why someone would be bothered to summon up the considerable effort required to break them. But someone did.

It is very unlikely that the person/persons responsible ever read the Burtonian, but that doesn't mean it shouldn't be reported upon. I've never quite got to grips with why people do things like this, perhaps someone could enlighten me?

Marilyn Smith



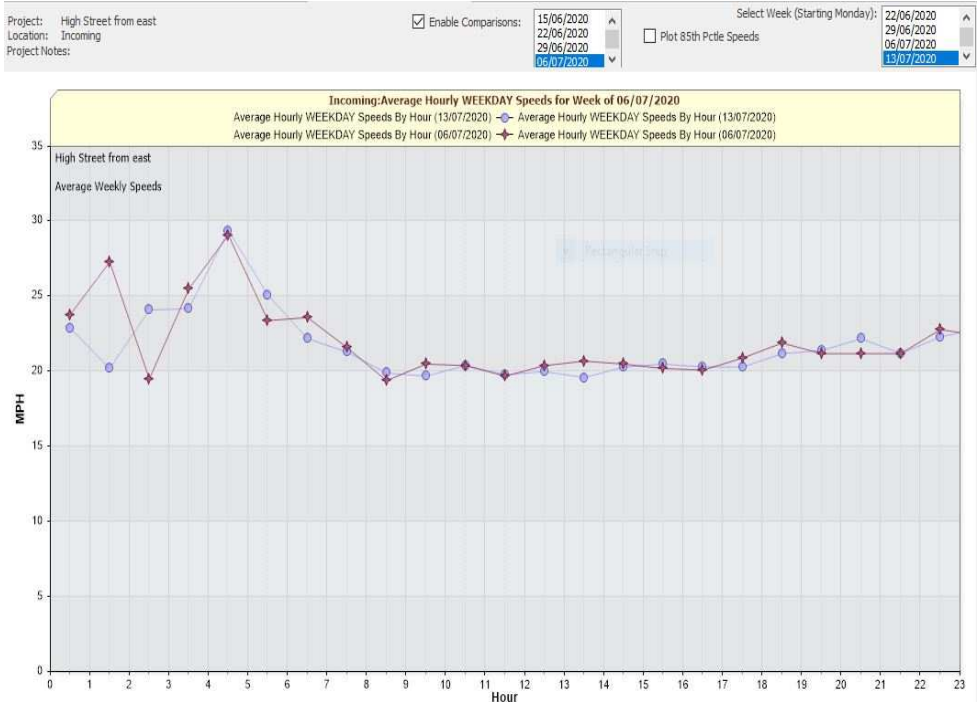
The Upper Settle phone box was purchased by Settle Town Council in early 2009 under the BT 'Adopt a Kiosk' scheme. As part of the scheme, the phone was removed and the Council were free to use the kiosk as they chose. It was agreed that Cultivating Settle would manage the facility and set up a community art gallery. Grant funding was obtained from

SPEED CHECK

You will have noticed the flashing speed sign on the High Street during July (of course you may not have noticed it if you were good!).

The chart below shows the average speeds in the first two weeks of July.

The pattern is almost identical in each hour of the day.



Craven District Council and Settle Town Council. The iconic phone box is of the K6 type and was designed by Sir Giles Gilbert Scott in 1935 to commemorate George the Fifth's Silver Jubilee and has been refurbished inside and out.

We believe the Gallery on the Green is the smallest public art gallery in the world. Certainly it is the only one to be open 24/7 and filled to capacity at least twice a day!! Since opening in 2009 we have mounted a constantly changing exhibition programme, with contributions from local, national, and international artists whose interest and generous engagement in sustaining the life of the gallery lies at the core of our ambitions. We are immensely grateful for all the support we have received since opening. The quirky nature of the gallery as "possibly the smallest in the world" and the iconic status of red telephone boxes has attracted a good deal of attention from national and local press. In the summer of 2019 we celebrate our tenth anniversary with an exhibition at the Folly Museum in Settle telling the story of the gallery and the exhibitions it has hosted over its first decade.



BURTON IN LONSDALE PALS WITH TROWELS

GARDEN WITH GUNTHER

AUGUST/SEPTEMBER 2020



As a finishing touch to the long haul of transforming a patch of waste land into the now lovely Orchard by Burton's Pals with Trowels, an illustrated Interpretation Board has recently been installed. It is a point of interest and gives visitors a potted history of the area around them. Go and take a look – we are rather proud of it.

If, after all the lockdown attention, your garden still needs things doing, David Thornber is here with his advice.

AUGUST

Once Lavender plants have passed their summer peak, trim them back quite hard to keep them compact and to promote fresh new growth. This can also apply to Origanum and Marjoram plants as they also tend to get 'woody' if not clipped back.

Larger summer flowering shrubs such as Philadelphus and Spireas can be shaped back now when the blooms have faded to stop them outgrowing their area.

If you can maintain your roses' health at this stage the flowering season can be prolonged well into autumn. Keep an eye out for blackspot, treat as required and also continue dead heading.

Make a note of which plants have not performed very well in their positions in the border. Going into the next month is a suitable time to start moving plants as they are unlikely to dry out too much now high summer is passing.

SEPTEMBER

The lawn will have had a tough summer either through hot dry spells or general use which will have led to wear and tear so it is a good idea to give it a feed. Use a specific autumn feed which should be high in potassium and low in nitrogen because you want to strengthen the sward rather than encourage soft growth that may be vulnerable to cooler temperatures.

Spring bulbs are starting to become available in shops so where you need a bit of early colour next year, try to fit some in near the front of the borders or in pots near doorways etc.

Tidy up Hosta foliage now it is becoming untidy and put down slug control if you grow Colchicums as the blooms can be ruined especially during damp mild periods when snails are out in force.

Finally, make sure any relevant tree stakes are in good order and ties aren't rubbing or perished, as they will be needed moving into late autumn.



Tai chi Qigong

Use the mind – free the body

Low Bentham, Victoria Hall
Mondays 6.15-7.45pm

Clapham Village Hall
Thursdays 9-10.30am

One-to-one tuition

**NO PREVIOUS EXPERIENCE
REQUIRED
ALL WELCOME TO JOIN AT ANY
TIME**

taichiqigongteacher@gmail.com



Friendly, professional legal advice

Individuals | business | agriculture

Call us today: 01524 846 846

LANCASTER | KIRKBY LONSDALE
www.osg.co.uk



IAN AKRIGG

FRIENDLY & PROFESSIONAL ADVICE

☎ 07539626044 ⓘ /I.Akrigg/

CALL FOR A FREE QUOTE & MEASURING SERVICE

B&W Funerals ***James G Macdonald***

24 Hour Service Private Chapel of Rest



Ingleton, Burton, Bentham, Austwick,
Clapham, Settle, Wray, Hornby, Caton,
Kirkby Lonsdale

& all the surrounding areas

We offer our own Funeral Plans on request

6 Chapel Lane, Ingleton, Carnforth
LA6 3FX

jmfunerals@gmail.com

Office Tel: 015242 41293

Tel: 015242 61370 Mob: 07758002260



Graham Fawcett Plant Ltd

Unit 3, Bentham Industrial Estate
Bentham LA2 7NB

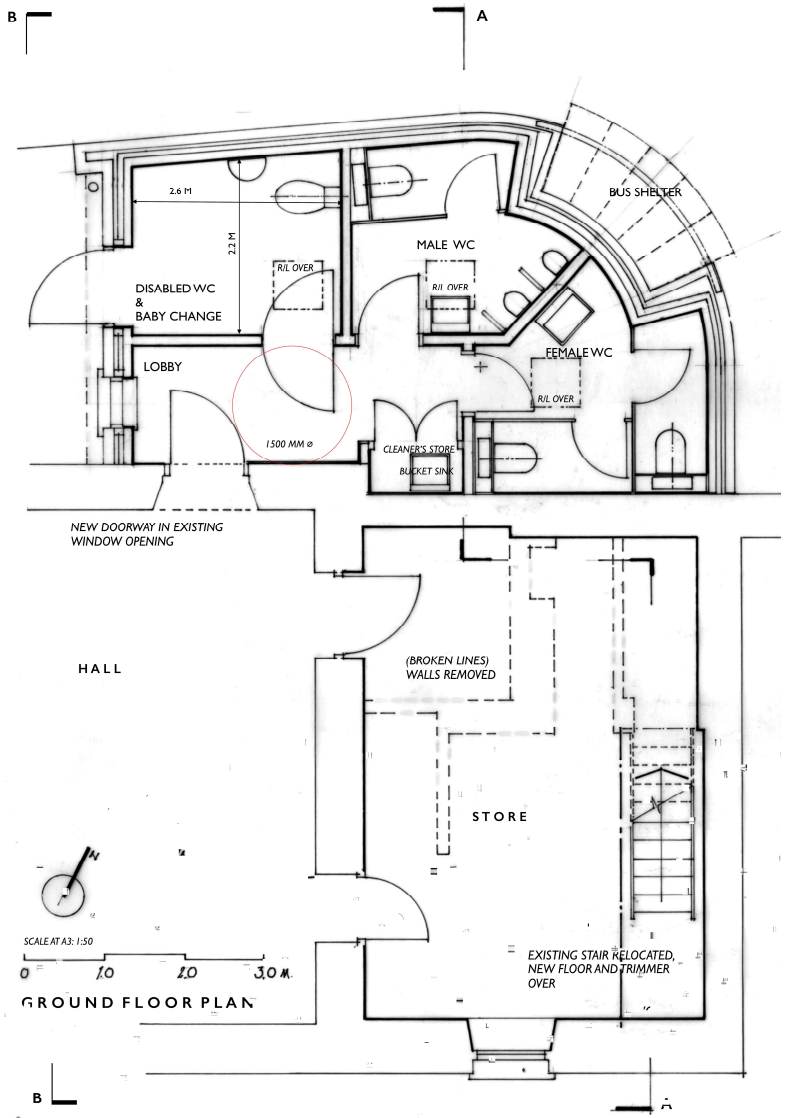
015242 62888 sales@fawcettplant.co.uk

GARDEN MACHINERY SERVICING & SALES

Mowers • Chainsaws • Hedgetrimmers • Blowers

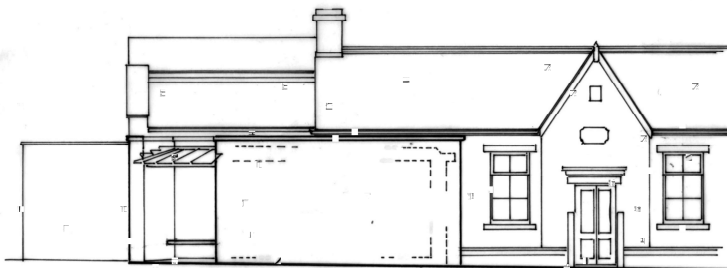
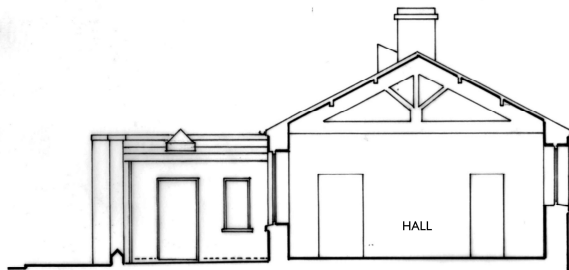
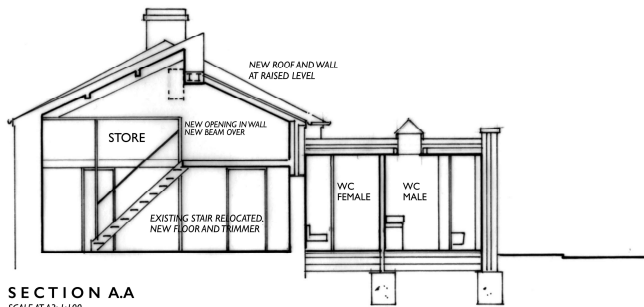
New **ALPINA** mower range now in stock
HONDA/ Briggs & Stratton petrol engines
P/EX WELCOME – Mowers to suit all budgets

PROPOSED EXTENSION TO THE VILLAGE HALL



We've shown our plans to upgrade the Village Hall in the **Burtonian** before but with this latest one are now getting close to a final design.

Users of the Hall will have noticed the inadequate arrangements for storing equipment held there, having to move one lot to get to another. The toilets too, are in need of a total make-over.



0 10 20 30 40 50 M.
SCALE AT A3: 1:100

BURTON IN LONSDALE VILLAGE HALL EXTENSION

PLAN, SECTION AND ELEVATIONS-DEVELOPMENT OF OPTION D

SCALES: 1:50 and 1:100 at A3
CHRIS PHILLIPS ARCHITECT 020 7485 3578 / 07743 498738 christ.phillips@cloud.com JUNE 2020

DRAWING NO. 820.Sk. 18

These plans to create new toilets built out at the front of the Hall, along with a much needed bus shelter, will free up space inside and make things easier for our users.

The new disabled toilet will also be available from the outside, even when the Hall is closed, for all users with a RADAR key.

Please let us have your views on these proposals, we of course want the changes to be welcomed by all users and the wider community in the village.

Nesting - An Unfortunate Sign of our Times

Towards the end of Lockdown we found this nest, which we believe had fallen from a neighbour's tree, and landed onto the front windscreen of our car. The nest is approximately 70mm in diameter but the alarming fact is the amount of plastic that this bird had used to create it. I'm not sure what type of bird this belongs to, but would welcome any thoughts and also if anyone else has seen similar usage of plastic in nests. Perhaps just another reason why we must ensure that we limit the use of non-recyclable plastic.

Mike and Mairi Illsley - mikelancashire@aol.com



The people of Burton came out to support the NHS 72 years.
Sue Best



Bus 80: Ingleton - Bentham - Hornby - Lancaster

Monday to Saturday

Towards Lancaster	NS				S
Ingleton Community Centre	0615	0900	1135	1335	1435
Burton in Lonsdale High Street	0624	0909	1144	1344	1444
High Bentham Bentham Club	0633	0918	1153	1353	1453
Low Bentham	0636	0921	1156	1356	1456
Wennington The Green	0644	0929	1204	1404	1504
Wray Proctors Farm	0648	0933	1208	1408	1508
Hornby Lunesdale School	0654	0939	1214	1414	1514
Brookhouse Black Bull	0702	0947	1222	1422	1522
Caton Station Hotel	0706	0951	1226	1426	1526
Halton War Memorial	0716	1001	1236	1436	1536
Lancaster Bus Station	0728	1013	1248	1448	1548

Towards Ingleton

Lancaster Bus Station	..	1000	1200	1400	1725
Halton War Memorial	..	1014	1214	1414	1739
Caton Station Hotel	..	1025	1225	1425	1750
Brookhouse Black Bull	..	1029	1229	1429	1754
Hornby Lunesdale School	..	1039	1239	1439	1804
Wray Proctors Farm	..	1045	1245	1445	1810
Wennington The Green	..	1050	1250	1450	1815
Low Bentham	..	1100	1300	1500	1825
High Bentham Bentham Club	..	1104	1304	1504	1829
Burton in Lonsdale High St.	..	1113	1313	1513	1836
Ingleton Community Centre	..	1122	1322	1522	1845

NS = this journey does not run on Saturdays

S = this journey only runs on Saturdays

Between Wennington and Low Bentham this service now operates via Ravens Close Brow and Burton Road, and no longer stops at The Punch Bowl.

Service 80 does not run on Sundays or Public Holidays.

See separate timetable for Northern DalesBus service 830 on Summer Sundays.

USEFUL WEBSITES

Rural Bulletin

www.rsonline.org.uk/

Craven District Council

www.cravendc.gov.uk/community-living/get-involved/community-news-newsletter/

Northern Gas Networks

<https://ngnceg.co.uk/>

Allerton Waste Recovery Park

<https://wasteservices.amey.co.uk/where-we-work/north-yorkshire/>

Community First Yorkshire

<https://mycommunity.org.uk/>

The Bentham Line

Mondays to Saturdays

Bentham	0603	0935	1538	2040
Wennington	0608	0940	1543	2046
Lancaster	0631	1006	1607	2114

Sundays (BUS)

Bentham	0718	1318	1918
Wennington	0738	1338	1938
Lancaster	0803	1403	2003

Mondays to Saturdays

Lancaster	0648	1046	1745	2131
Wennington	0711	1109	1809	2157
Bentham	0717	1115	1815	2202

Sundays (BUS)

Lancaster	0600	1200	1800
Wennington	0625	1225	1825
Bentham	0645	1245	1845

Gallaber Farm

Holiday Cottage and Caravan Park
Cottage with stunning views sleeps 4

A 5 and a 6 berth static caravan for
holiday rental

15 touring pitches with hook up points

For further details please contact Jennifer
Sedgwick on 015242 61361 or visit our
website www.gallaberfarm.co.uk

Holiday Cottage High Street, Burton in Lonsdale

Warm cosy well equipped cottage appointed to a very good standard.
3 Bedroom, Sleeps 5. Sorry no pets.
Weekly and shorter breaks are welcome.
Discount for friends and relatives of locals.

For more details please contact Heather
or Keith 07540 137715



USE YOUR POST OFFICE

Burton Community Shop
High Street

**Five mornings a week
9am to 1pm
(No afternoon service)**

*Visit Carolyn or Julie or June and
discuss your requirements
or ring 63397 for information*

YOUR Post Office provides:

- FREE payment of utility, council tax and other bills with instant receipt
- Draw cash from **ALL** high street bank & building society accounts
- Buy & sell foreign currency and travel insurance at competitive rates

Open

Wednesday & Thursday : 5pm - 11pm

Friday & Saturday : 4pm - 11pm

Sunday : 12noon – 10pm

-

Food Served

Wednesday & Thursday : 5.30pm – 8pm

Friday & Saturday : 5.30pm – 8.30pm

Sunday : 1pm - 5pm

-

From Wednesday 5th August we will be serving food at the pub, please
check our Facebook page or call us for service times.

We are opening on Tuesday evening in August from the 11th to offer the
50% off discount - but I will post this on Facebook & outside.

-

Good Food, Real Ale, Beer Garden, All Welcome

-

9 Low Street, Burton-In-Lonsdale, LA6 3LF
015242 61298



the
PUNCH BOWL

www.punch-bowl.co.uk