

The **Burtonian**

Burton in Lonsdale
Village Newsletter

Number 120 Feb 2024

50p - free to Residents



VILLAGE HALL PROGRESS REPORT

Ruth Gill

Exciting news – The building work is progressing well despite the weather and the roof is due to go on next week. The sub-committee are busy poring over brochures and colour charts for sanitary fittings, toilet cubicles, and light fittings.

We are very grateful to the Community Workforce who have agreed to renovate and decorate the entrance in early February. This will provide an enlarged, attractive and welcoming area to the hall. The curtains are away for cleaning but it is planned to replace them in time.

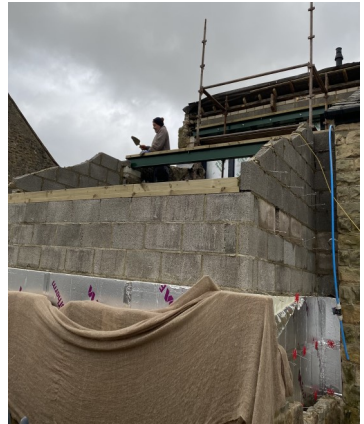
We are hoping to reopen by the end of February and to celebrate the completion of this phase by late Spring.

Future events planned –

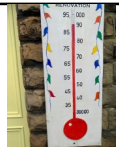
AGM - 11th March. Members of the public are welcome.

Chris Bannister – 27th April.

Nicola Mills is planning to return to us in the Autumn with 'Opera for the People'.



Even though the works have been held up by the terrible weather, it's great that the Village Hall Committee have managed to get together the funds and been so well supported in their efforts, for instance Tony Gill's charming Village Calendar, which has raised £280.



ARE YOU LOOKING TO
HEAR INTERESTING SPEAKERS,
TRY NEW CRAFT ACTIVITIES,
VISIT A LOCAL CAFE?
THEN COME ALONG TO THE FRIENDSHIP GROUP.
WE MEET THE 1st THURSDAY IN THE MONTH IN THE
CHURCH ROOM.
LOOK OUT FOR OUR COLOURFUL POSTERS OR ASK
ABOUT US IN THE SHOP.

Next Meeting is on 8th February, at 2pm

**Nigel Whitfield presents his
"AROUND THE WORLD IN EIGHTY DAYS"**



Christmas Card Studio,

Frontispiece: Linocut "From Barnoldswick Lane" by Margaret Carus

Editors: David & Cecile Gillibrand burton.news@gmail.com

Next Copy Date: 15th January 2024.

(please use *word* and/or *jpeg* formats, not *pdf*)

Village Diary

| | | | | |
|--------|----------|-------|---|--------------|
| 1 Feb | Thursday | 09:30 | Stay & Play | Church Room |
| 02 Feb | Friday | 10:00 | Coffee & Chat | Village Hall |
| 05 Feb | Monday | 18.45 | Bridge Club | Pavilion |
| 06 Feb | Tuesday | 19.30 | Meeting about the Punch Bowl | Pavilion |
| 08 Feb | Thursday | 14.00 | Friendship Group "Around the World in 80 Days" | Church Room |
| 08 Feb | Thursday | 09:30 | Stay & Play | Church Room |
| 08 Feb | Thursday | | Meeting about the Punch Bowl | Pavilion |
| 12 Feb | Monday | 18.45 | Bridge Club | Pavilion |
| 15 Feb | Thursday | 09:30 | Stay & Play | Church Room |
| 15 Feb | Thursday | 19:30 | Parish Council Meeting | Village Hall |
| 17 Feb | Saturday | 14:30 | Concert & Cakes : Talland String Quartet | Church |
| 19 Feb | Monday | 18.45 | Bridge Club | Pavilion |
| 24 Feb | Monday | 18.45 | Bridge Club | Pavilion |
| 29 Feb | Thursday | 14.30 | Ceilidh Club | Pavilion |
| 01 Mar | Friday | 10:00 | Coffee & Chat | Village Hall |
| 02 Mar | Saturday | 19.30 | Film Oppenheimer | Village Hall |
| 04 Mar | Monday | 18.45 | Bridge Club | Pavilion |
| 07 Mar | Monday | 18.45 | Bridge Club | Pavilion |
| 11 Mar | Monday | | Village Hall AGM | |
| 11 Mar | Monday | 18.45 | Bridge Club | Pavilion |
| 16 Mar | Saturday | 14:30 | Concert&Cakes : MalletSquared | Church |
| 18 Mar | Monday | 18.45 | Bridge Club | Pavilion |
| 05 Apr | Friday | 10:00 | Coffee & Chat | Village Hall |
| 06 Apr | Saturday | 19:00 | Film Night (film starts at 19:30) | Village Hall |
| 27 Apr | Saturday | | Chris Bannister | Village Hall |

New Ceilidh Club, live music, all welcome!

Tim Fearon

The Last Thursday Ceilidh Club is starting at Burton-in-Lonsdale Sports Pavilion (on Bentham Moor Road).

The first ceilidh is on **Thursday 29th February**, from 2.30 until 4.30. Music will be provided by real musicians, and there'll be someone to lead you through the dances – no prior experience needed, and you don't even need to bring a partner. Experienced musicians are welcome to join the scratch band. And all it will cost is a £3 (approximate, depending on numbers) to cover the hall fee. Bring your own refreshments. So hope to see you there!

For further information please contact Tim Fearon on 07963308333, or email at tom-billy.tf@gmail.com

Due to delay in the building work, All Saints' Church Pancake Day, due to be held in the Village Hall on Shrove Tuesday will not now go ahead.

Instead for this year we will donate the cost of ingredients to The Children's Society. We will also put a collection box in the Village Shop for any other additions to this contribution. Thank you.

H & M

CRAFTSMEN

KITCHENS | BEDROOMS | STUDIES



Full design and fitting service

Showroom Open:

Mon-Fri 9am-5pm | Sat 10am-1pm

Ingleton | North Yorks | LA6 3NU

015242 41535

kitchensandbedrooms.co.uk



Healthy Pet Club

PUPPY & KITTEN PLANS



01729 823538

www.daleheadvetgroup.co.uk

JAZZ IN HORNBY

Many thanks to everyone who came in November to see the Steve Andrews Quartet, and thanks also to those who e-mailed to say they couldn't be with us. However because this band is so popular with so many of you they will be back again in November 2024.

In the meantime, on Saturday March 2nd we will be hosts to "Groove Crusade" a tribute band playing the music of a 1960's American group the 'Jazz Crusaders' playing in a very funky style with rhythms known in the trade as a 'fat groove'. Our friend Pete Major is on keyboard and excels himself in this genre.

Usual venue: The Village Institute, Main Street, Hornby, LA2 8JR.

Doors & bar open at 7.30 music from 8p.m. Tickets £18. on the door or ring 015242 22227.

Hoping to see you there,

Sam

P.S. If you would like a pre-gig bite the Royal Oak is just up the street, but it's best to ring: 0152432 21228.

The Future

From our special correspondent

As some of you may know, and many more of you probably don't care, I haven't been well recently. Diagnosed with prostate cancer in 2016 I have deteriorated recently and am now confined to my bed where professional carers and family and neighbours look after my every need. Unfortunately this has prevented me from getting out and about and reporting to you on such vital issues as traffic, local builders, queuing in the shop and the history of Burton names. (Hurrah, I hear you cry). I hope that someone will now pick up the baton and run with it to amuse and sometimes irritate you. It's not difficult, most of what I have written over the years has been drivel and if you get stuck for ideas just call into your local pub, any evening, and keep your ears open. Speaking of the Punch Bowl, I am confident you will buy it and make a success of it, as my readers will know my feelings for this village run strong and deep and the local pub is a vital part of Burton. **Please look after it!!!**



Friendly, professional legal advice

Individuals | business | agriculture

Call us today: 01524 846 846

LANCASTER | KIRKBY LONSDALE

www.osg.co.uk



Ofsted rated us Outstanding in all areas

Open 7.30am – 6.30pm

- 30 hours free childcare for eligible 3 & 4 year olds.
- 15 hours free childcare for eligible 2 year olds.
- Modern facilities and a friendly traditional atmosphere.
- Flexible opening hours to cater for most needs
- Dedicated Baby facilities.
- Holiday club available during all school holidays.

The Lychgate.

In our last Burtonian we asked villagers if they had been to have a look at the Lychgate, situated on the edge of the Very old and separate churchyard? If you have, you will see that it is in dire need of repair.

Years of maintaining the VOSCY by the Parish Council have resulted in the area being a lovely place for views and a walk, but the Lychgate has been neglected so it now falls to All Saints' PCC to repair it. A report shows us that the priority is to get the roof repaired, and a local builder has now given us a quote of about £8000 to achieve this.

So: we need your help.

A box will soon be in the shop asking for your donations. We are asking the Parish Council and PCC for their help, and we are preparing grant applications. The lychgate is one of many village treasures, and once repaired we can prepare some information leaflets about this area of the village where the Old Chapel of Ease once stood.

If you have any information or pictures of the Lychgate, please get in touch or leave a note for us in the shop.

Thank you to all of you.

Christine & Anne.



**Janette Street -
Psychotherapist and Counsellor
Qualified in
Person Centred Counselling / PGDip
BA Hons**

I have experience working with adults, adolescents and families with a range of presenting concerns including

- Anxiety
- Depression/Low Mood
- Autism
- Grief and Loss
- Relationships

Email: Janette.therapy67@gmail.com

Text: 07598758374

Website: www.janetestreet.co.uk

BACP Registered Practitioner.



**USE YOUR
POST OFFICE**

Burton Community Shop
High Street

**Usual Service Now Resumed
We are open every Weekday
9am to 1pm**

*Do visit us and
discuss your requirements
or ring 63397 for information*

YOUR Post Office provides:

- **FREE payment of utility, council tax and other bills with instant receipt**
- **Draw cash from ALL high street bank & building society accounts**
- **Buy & sell foreign currency and travel insurance at competitive rates**



NEWS FROM THE SCHOOLS

Melling St Wilfrid CE Primary School **For the love of learning friendship and faith**

Happy New Year to Everyone in Melling and the surrounding areas. We hope 2024 is a great year for you all.

We enjoyed a fantastic end to the term. There is nothing quite like Christmas in a rural primary school and it is a time of year when probably nothing has changed since you were in primary school.

The whole school can come together for Christmas dinner and enjoy the traditional dinner with all the trimmings served by our fantastic cook, Sarah. Crackers and party hats are of course an essential feature but instead of Christmas pudding and mince pies we have the children's favourite homemade cookies and flapjacks.



Y6 and our school cook, Sarah.

All the infants are thoroughly involved in the Nativity and know lots about the Christmas story – even the 4-year olds. Shepherds with tea towels on their heads are still a thing here in Melling!

The older children enjoy leading the Christingle service at Church and in a world where everything changes, it is great that the traditions of Christmas in school stay the same. The Year 6 enjoyed presenting Sarah the cook with chocolates to thank her

for all the Christmas lunches they have enjoyed in school over the years.

Just before the end of term we also had a visit from the Church school inspector - the inspection process is similar to OFSTED, two inspectors were here for the day but they comment on the ethos and quality of the children's development. The inspector loved Melling and the school and came back at the weekend to show her husband round the area, so thanks to everyone who spent the time to talk to her and make her feel welcome.

The report is available online- here is just one of the good quotes.



‘Every member of the Melling school community knows themselves to be loved and cherished. The Christian vision to ‘Let your Light Shine’ has helped leaders to establish an exceptionally inclusive and nurturing school culture. ‘

I feel very proud to work with such a great team of staff and school full of children.

Mrs Fiona Ip Headteacher



Tatham Fells CE (VC) Primary News

'Roots to Grow, Wings to fly, Faith to flourish

Happy New Year to everyone. As we look forward to all the events to happen in 2024. We can now offer free Nursery places for all 3 and 4 year olds all day on Thursdays and Fridays from 8:20am to 3pm. Please email bur-sar@tathamfells.lancs.sch.uk for more details.



Our Little Explorers club on Friday afternoons will continue this term with sessions being held even when the weather is unfavourable as we also have the cabin classroom

available. Please see our posters on our face book page Tatham Fells CE-VC Primary School for more details. All toddler and pre-schooler families are welcome.

Our Y5/6 Pupils showed their amazing teamwork in the Lune Valley Rugby tournament and won gold becoming Lune Valley District Champions. Our Y2/3 pupils enjoyed a fantastic interactive morning thanks to Lancashire Fire and rescue service. KS2 thoroughly enjoyed their Judo and fencing sessions this half term.



At the end of the Christmas term we enjoyed our traditional Christmas Fair in school with lots of games and families joining us for tea and mince pies. Some stalls sold out in a few minutes. We are also very grateful to the friends of the school who at The Bentham Christmas mart served mulled wine and mince pies and raised funds for transport for our school visits.

The whole school enjoyed a visit to the Dukes theatre to watch a Christmas Carol. It was a musical which we all enjoyed and Y5/6 are learning about the novel in their English lessons so it was perfect timing.

The Nativity in church at the end of last term was amazing! The singing was amazing, the children were all involved in telling the Christmas story so well and we had real life donkeys to enhance the experience.

Fiona Ip Headteacher

New Year news from Leck St Peter's School

Farewell to Mr Stafford-Roberts

At the end of December we said goodbye to our headteacher Mr Stafford-Roberts. We all gathered around in a goodbye assembly where all of the parents, old and new, were welcome as well as previous members of staff and members of the local community. There were a number of speeches from staff, the PTA and the Governors. Mr Stafford-Roberts had worked at our school for 18 years, first starting in the infants as a teacher. All of the upper juniors said something about his time at Leck. Two people from each year group said a memory all about the special memories he has made with all of us children through the past 18 years. We also gave him a basket of gifts to go with him on his new journey. He will be missed but we are also excited to welcome our new head, Mrs Davison.

Welcome to our new head teacher

This term we have a new headteacher called Mrs Davison. She has come from Lancaster Christ Church School until the end of the summer term. She wanted to come to Leck because it is a very friendly and family oriented school. Mrs Davison's favourite hobbies are walking, reading and cooking. She loves working with children. "Everyday is different and I like making people smile," she said. "I want the school to continue to be a lovely happy place and for everyone to have the opportunity to be the best they can possibly be."

Welcome back to school day

To start our Spring term, we had a 'welcome back' day at school. We learnt about friendship and why it is important. Every welcome back day at school we walk around the school track in the morning with our friends, and catch up to see what everybody did over the holidays. It helps us to feel less anxious about coming back to school after the holidays. We made friendship bracelets for each other. It was really fun and it was a good way to help some infants if they needed some help with making their friendship bracelets.

Learning about herbalism

We run a Herbalist Club every Tuesday after school. Tracey (the herbalist teacher) tells us about different plants and herbs. Each week she teaches something different. From elderberry to rosehips and cinnamon to marshmallows, she makes it fun in every lesson and always makes us laugh. Sometimes we are outside learning about all the unknown plants in the surroundings of our school grounds and sometimes we are inside making lots of amazing things. She always brings us a snack in the middle of the lesson and we get to make useful things that we can take home. Our favourite lesson was when we studied lavender and made lavender bath bombs. For a snack she brought in lavender sugar cookies and they were delicious.

French day

We had some French visitors at school on the 4th January. The upper Juniors had to prepare a speech about themselves but we had to speak it in French. It was a good learning opportunity but it was also really hard to speak in French because most of the words are really hard to pronounce. We played some French games with our friends. The Y6s put together a French café. We served pain au chocolates, crepes and croissants. For the

toppings we had Nutella or strawberry jam. For the drinks we had orange juice, apple juice, or water. We all had to speak French when we served and ordered.
C'était amusant!

Our French Cafe



By:
Lillian Booth Y6
Ruby Geidmintis-Dixon Y6
Ruby Harrison Y6
Leck School Journalists Club

Over 55 and thinking of downsizing in Bentham?

Our vibrant Extra Care scheme, Bowland View, could be the perfect place for you.

Highlights include:

- On-site café/bistro and hair salon
- Optional 24/7 care service if and when you need it
- Pets welcome to move in too

*Extra Care is for over 65s, however you may also be eligible if you are aged between 55 and 64 and have a care need. Eligibility criteria, monthly rent up to 75% on shared ownership, core charges and service charges apply.

Arrange a viewing by calling **07753 451 079** or emailing **info.bowlandview@housing21.org.uk**
Bowland View | Scholars Rise | Bentham LA2 7FS

housing21.org.uk    

Housing21
Extra Care Living



Guide price:
£45,000* for a
one-bedroom
apartment (25%
share)



CONCERT & CAKES

We are back on **Saturday 17th February** with another first – the MalletSquared Percussion Duo. Expect marimba, timpani, xylophone, cymbals, triangle, snare drum, bass drum, tambourine, maracas, gongs and many others (coming to us in a big van from Manchester!) from these innovative student friends. The music will be fast (“Flight of the Bumblebee”) and colourful (“Alborada del gracioso” by Maurice Ravel); something Concert&Cakes has never seen before.

On **Saturday 16th March** we welcome the Talland String Quartet, specially recognising that Concert&Cakes was set up to recognise Burton in Lonsdale resident, the inspirational violinist and teacher Dr Chris Rowland.

In complete contrast to February’s concert, this is string chamber music at its most moving. The Quartet has chosen a classic programme to include Samuel Barber’s String Quartet in B minor – better known as the heartrendingly beautiful “Adagio for Strings” made famous by many TV and film sound tracks including The Elephant Man, Platoon and Lorenzo’s Oil.

All concerts start at 2.30pm in All Saints Church, Burton in Lonsdale. There is an hour of music and an hour to meet the musicians and eat wonderful home-made cakes and chat. There are no tickets and no entry fee; seating is on a first-come first served basis. We do ask for a donation if you have enjoyed the music as well as a contribution to the refreshments.

We look forward to seeing you there.

Christine, Cathy and Steve

To go on the mailing list, email concertandcakes@outlook.com



SMART SIGNAL

Aerial & Satellite Installation & Repair

Wi-Fi & Home Network

CCTV Installation



Ben Fawcett

Frounts Cottage, Duke Street,
Burton In Lonsdale

015242 62017 – 07950028622

smartsignal@outlook.com

MARK WATSON
HOME & GARDEN
MAINTENANCE



- Raised beds
- Mowing and strimming
- Hedge cutting
- Turfing
- Power washing

- Fencing
- Interior and exterior painting
- Loft insulation
- Gutter clearing

With the Festive Season activities behind us club members now look forward to a productive and enjoyable 2024. On behalf of them all may I offer a big thank you to everyone who donated to our Christmas collections. It was a privilege and a joy to meet and chat with so many people who willingly put money into our collection tins which amounted to a remarkable total of just over £1,700. In due course this money will be donated to deserving local causes.

Looking ahead we already have a number of excellent speakers booked. The first is Andy Underwood, a member of the Rotary Club of Ulverston. Andy is the District Membership Representative. It will be interesting to hear what he has to say on the subject of attracting and enrolling new members. On 1st February Pam Holgate, our District Governor, is our speaker. During her term of office she will visit every Rotary Club in the District. On 22nd February we have a lady speaker who later in 2024 will attempt to row across the Atlantic. Wow!

My final thought as I finish this piece is to remind you of the toast members drink to at every meeting which is "Rotary Fellowship and Peace The world Over". Rotary is a global organisation and it is comforting to remember that thousands of Rotarians around the world in these troubled times will raise a glass to this.

Stay well, stay safe.

Lilian .



Designers, suppliers & installers of quality German kitchens.

Call in at one of our beautiful showrooms in Lower Bentham or Kirkby Lonsdale

| | |
|---|--|
| Butler Interiors Low Mills Mill Lane Low Bentham Lancaster LA2 7FL | Butler Interiors Lane House Business Park Kendal Road Kirkby Lonsdale Cumbria LA6 2HH |
| 015242 63388 | 015242 37747 |

www.butlerinteriors.co.uk



(Brown & Whittaker)

James G Macdonald & Tara Wilson

24 Hour Service Private Chapel of Rest



Ingleton, Burton, Bentham, Austwick, Clapham, Settle, Wray, Hornby, Caton, Kirkby Lonsdale & all the surrounding areas

We offer our own Funeral Plans on request

6 Chapel Lane, Ingleton, Camforth LA6 3FX
jmfunerals@gmail.com
Tel: 015242 41293
Mob: 07758002260 or 07912 568672 (Tara)

Find us on Facebook

Our Life is Love

*Reflections on Health, Ageing, Young People,
and Wellbeing, in our place and time*



Bowland and Ewecross Deanery Churches Lent Meetings 2024

A series of discussions on Health, Ageing, Young People, and Wellbeing, with speakers working in each of those fields talking about the particular circumstances of their practice at this time. With bible reflections and prayer, each session will give us the opportunity to explore the challenges of our times. The final session will be a plenary led by Rt Revd Anna Eltringham, the Bishop of Ripon, who will help us reflect on how Christians in our area might engage more fully with these issues. Everybody is welcome.

Five Wednesday evenings at Settle Parish Church 7.00-9.00pm

- 21 February **Health** with speaker *Dr Colin Renwick, local retired GP*
- 28 February **Ageing** with speaker *Jonathan Kerr, chief officer for Age UK North Craven*
- 6 March **Young People** with speaker *Gareth Whitaker, Headteacher at Settle College, with a group of Sixth Formers*
- 13 March **Wellbeing** with speaker *Leon Fijalkowski, Strategic Director at Pioneer Projects, Looking Well Studios, Bentham*
- 20 March **Plenary Session** - how the Church and others in our communities support each other with *all our previous weeks' speakers; chaired by, and including an address by Rt Revd Anna Eltringham, Bishop of Ripon*

Refreshments served on arrival. Parking available at car park opposite the Parish Church Holy Ascension, Church Street, Settle BD24 9JA.

Enquiries: Revd John Davies, john.davies@leeds.anglican.org, 01524 805928

'Our life is love, and peace, and tenderness; and bearing one with another, and forgiving one another, and not laying accusations one against another; but praying one for another, and helping one another up with a tender hand.' Isaac Pennington, 1667



Village Produce Show
14th September 2024
Village Hall



It's time to get planting and preparing for the village produce show!



Following the success of the show last year, classes have been increased to include:

Vegetables

- A Group of Onions
- Heaviest Courgette/Marrow
- Group of Courgettes
- 3 Beetroots with Foliage
- 3 Carrots with Foliage
- A Group of Runner Beans
- Longest Runner Bean
- A Group of Tomatoes
- Largest Tomato
- Freaky Vegetable
- 2 Homegrown Apples

Baking & Preserves

- Loaf of Bread (White/Brown/Seeded)
- A Plate of Cheese Scones
- A Plate of Fruit Scones
- A Round of Shortbread
- A Victoria Sponge Cake
- Gingerbread
- Fudge
- A Jar of Jam
- A Jar of Jelly
- A Jar of Chutney
- A Jar of Lemon Curd

Flowers

- A Dahlia Bloom
- A Rose Bloom
- A Vase of Cut Garden Flowers
- A Vase of Dahlias

Art & Craft

- A Sugar Craft Flower
- An Embroidery or Cross-stitch with a Harvest Theme
- A Bird Box for Small Garden Birds
- Burton Life – painting, drawing, pastel, watercolour, etching etc.

Classes are open to all ages but, in addition, there will be dedicated Children's section with three age groups, (under 5, 5 – 8 years and 8 – 12 years) with the classes:

- A Painted Stone
- Gingerbread Person
- Imaginary Animal using Fruit & Vegetables
- Decorated Small Flowerpot

Points will be awarded to first three in each class with the Peter Kitching Cup being awarded to the child and adult with the most points.



Entry forms will be available in the village shop nearer the date.



It's being so cheerful what's keeps us going... some food for thought

Susan Gregory

No-one likes talking about what happens after we die. Making a Will is an acknowledgement, on one level, of one's mortality.

Fortunately, living in Burton, you don't need to worry – or do you?

Burton is in the ancient Duchy of Lancaster, the Palatine of Lancaster. If you die in this area without making a Will, with no traceable relatives, your estate will be taken by the Duchy under *bona vacantia* rules. Sometimes the Duchy doesn't wait for relatives to be traced before snaffling the estate. This has recently been highlighted in the press (although not the Lancaster Guardian, strangely enough!).

Whether or not you agree with this method of estate dispersal, not leaving a Will can create an administrative nightmare for those dealing with your affairs after death.

The nightmare can be reduced by making a Will, stating your wishes for your estate – large or small. The will can be stored somewhere accessible (e.g. with a relative, a solicitor or central registry).

You can even write a Will yourself at (almost) no cost. For example, you can be referred to the National Free Wills Network by a charity – there are 225 listed on the website

<https://www.nationalfreewills.net/>, email: info@nationalfreewills.net From their website: "The National Free Wills Network comprises charities ranging from household names to those with a strong regional or local focus. The purpose of the Network is to ***offer free Will writing services to the charities' known supporters.*** (my italics)

The National Free Wills Network is a paid-for Wills programme whereby the charities pay for the Wills to be written. The Network's operation is straight forward." Not mentioned: a 'donation' to a charity on the list is requested before doing the work! However, it's likely to be less than a solicitor's charges.

As well as the above, there are various other routes. From the Government website:

<https://www.gov.uk/make-will> there is a lot more information:

"You can write your will yourself, but you should get advice if your will is not straightforward. You need to ***get your will formally witnessed and signed to make it legally valid.*** If you want to update your will, you need to make an official alteration (called a 'codicil') or make a new will"

Don't forget: Age UK can also give advice.

Finally, Free Will Month happens in March 2024. Look out for it!

No excuses, now....

¹<https://www.genuki.org.uk/big/eng/Gazetteers/NatGaz1868/Lancashire/Lonsdale>

²Snaflle: *verb*; **INFORMAL•BRITISH**; take (something) for oneself, typically quickly or without permission

CHRIS BANNISTER

*Featuring songs from the Singer-Songwriter era
plus some originals from the new album 'The Calling Course'*



Saturday 27th April · 8.00pm

BURTON-IN-LONSDALE

VILLAGE HALL

HIGH STREET, BURTON IN LONSDALE LA6 3JU

Tickets: £10.00 - Reserve by Calling/Texting 07973 802637

Doors Open 7.30pm | Bring Your Own Drinks

ONE THING LEADS TO ANOTHER...

(Take 2...the recipe appeared minus the all important 'end bit' last time round!!! Well done those amongst you who noticed!)

Last year's Camino saw me walking through Portugal...and I ate LOTS of Pasteis de nata! I thought it would be fun to try and make them myself. It proved easier than I had expected...I then made some for Concert&Cakes which provoked the request 'please put the recipe in the Burtonian'!!! So here it is (now in full!!) **You do need a jam thermometer, a 12 cup metal Yorkshire pudding/ muffin tray and be willing to turn your oven up to its hottest** (it didn't break mine but did feel an act of faith the first time I did it!)...the tarts have to caramelize a bit and in Portugal they usually have some black bits on the top! Go for it! Pasteis de nata are delicious – they are the ultimate 'feel good' pastry!. They also freeze well in the unlikely event you have some left over! Bon appétit!

PASTEIS DE NATA (Portuguese Custard Tarts) Makes 12

50g plain flour

Good pinch of salt

350ml full fat milk (or even single cream for extra luxury)

240g granulated sugar

75ml water

6 egg yolks

1 tsp vanilla extract

1 cinnamon stick

The peel of 1 lemon cut into strips

Ready rolled Puff pastry sheet (e.g.Jus Rol)

Approx. 50g butter, melted, for basting

*

Pre-heat oven to 290 degrees C (or the nearest to this your oven will go).

Grease a metal 12 cup Yorkshire pudding tin with some of the melted butter and put into the fridge to harden..

Make a sugar syrup as follows: In a heavy-based pan put the sugar, water, vanilla extract, lemon peel and cinnamon stick. Without stirring bring this mixture to the boil and continue until it reaches 100 degrees C (use a jam thermometer). Remove pan from the heat and take out the cinnamon stick. Leave to cool.

Then, in a separate pan, whisk together the milk, flour and salt. Cook over a medium heat stirring continuously until thickened. Take off heat and cool for 10 minutes. Once cooled, whisk in the egg yolks and cooled sugar syrup mixture. Pass this mixture through a sieve and into a pouring jug to remove any lumps, egg bits and the peel.

Prepare the pastry as follows (important!): Cut the puff pastry sheet into two.

Baste one half with the rest of the melted butter and 'glue' one side on top of the other. Starting from the shorter side, roll the two sheets as tightly as possible into

a roll (to avoid gaps). Then cut this roll into 12 similar sized coin-shaped pieces. Then (on the parchment the pastry arrives in) lightly roll out the 'coins' to make 12 flat circles of approx. 10cm across each.

Line the 12 cups in the tin as follows: Dip your fingers into cold water then place one flattened 'coin' of pastry in each tin and press lightly and evenly into place against the cold melted butter which now acts like a 'glue'!. The pastry needs to be just slightly higher than the rim of the cup. Press together and seal (with a touch of water) any gaps that may have appeared in the pastry.

Fill each cup three-quarters full with the custard mixture (it will fill out as it cooks.) Don't overfill! (Any excess custard mixture can be baked alongside in a greased ramekin).

Bake for approx 10-12 minutes. The tarts will caramelize and blister with brown/black spots. Use your judgement. Once nearly cooked it doesn't hurt to open the oven and check on them. Note that the temptation is to take them out of the oven a bit too soon!! Be brave! Once cooked, turn out to cool onto a cooling rack. Best eaten the same day but they also freeze well!

Cathy Rowland



Full Days Available!

Happy Days at **Busy Bodies Pre School**

All 3 to 4 year olds can access 15 hours per week of free early years entitlement. Some 2 year olds are also eligible if criteria met.

Session Times
Monday, Tuesday & Thursday

Morning Session - 9am-12.30pm - £14.00 (includes lunch period)
 Afternoon Session - 12.30pm - 3pm - £10

Full Day - £24.00

(A school lunch can be provided upon request for £1.10)

Busy Bodies Pre School,
 c/o Melling St Wilfrid Church
 of England Primary School,
 Lodge Lane,
 Melling,
 LA6 2RE.
 015242 21538 Ext 2



Bay Vets
 "The Community Vets"

Inspiring trust, passion and care to deliver excellence to pets and their families.

Lancaster 01524 32696
 Morecambe 01524 410867
 Milnthorpe 015395 62770
 Caton 01524 770615

24 hours emergency service

info@bayvets.co.uk
 www.bayvets.co.uk

Restoration Den & Shop

1 Main Road, Hellifield BD23 4HX

Garden Furniture Makers and Restorers

Vintage Toy Restorers

Powder Coating Service

Cushions, Lampshades & Home Furnishings

Local Collection & Delivery (we live in Burton)

Contact: **Richard and Emma on 07730 285153**

Email: **emmagalley@yahoo.co.uk**

Monday-Friday 9am-5pm

Saturday by Appointment

As Seen On Bangers & Cash: Restoring Classics



Ali & Rachel
THE BARBERS SHOP
Station Road,
Bentham

Established over 25 years



Open Mon-Sat with appointments on weekdays,
walk-ins Thursday evenings and Saturday mornings.

A professional and friendly service guaranteed.

Call Rachel or Ali on 07851464433/07761725744 or pop in!



FUTURE OF THE PUNCH BOWL

There will be 2 meetings in the Pavilion to find out views on the future of the Punch Bowl

Tuesday 6th February 7.30pm

Thursday 8th February 4.30 pm

Clinical Reflexology & Indian Head Massage

GREAT FOR

- Pain relief
- Better sleep
- Depression



Available in Burton in Lonsdale & surrounding areas.

www.reflexzones.co.uk

0779 517 5563

Everything for

✿ Knitting ✿ Crocheting
✿ Sewing ✿ Felting
✿ Quilting...

...and all manner of crafting and creating.

Craftopia

6 Main Street, Ingleton, LA6 3EB,
North Yorkshire
Tel: 015242 41221
email: crafterpia.ingleton@gmail.com
www.crafterpiaingleton.co.uk

WILL HAMBLING

PAINTING & DECORATING
INTERIOR & EXTERIOR



WILL.HAMBLING@SKY.COM

07858 572 336

The Piano Man

Christopher Bethell

Professional tuner,
servicing and repairing
upright and grand pianos

07817 162686
chrisbethell137@gmail.com



NOTES FROM AN UNINTENDED NATURALIST FEBRUARY 2024

This month, if you walk along Ireby Road, on its left, just where the lane rises towards the A65, a hedge is being newly laid. It's a wonderful example of traditional hedgelaying along several hundred yards.

The farmer, who owns this land, told me that the hedge had not been laid since the Second World War. It is a time-consuming ancient craft that has many benefits and this farmer's care over detail is very much to be admired.

Ever since the sixteenth

century, when open land was enclosed into fields, the laying of hedges was a fine method of keeping stock secure and sheltered. An alternative to drystone walls and less costly.

Aesthetically, it is a joy to see the horizontal young branches of broadleaf trees interweaving in lovely patterns and its dense cover doesn't just keep livestock secure. It's also a haven for nesting birds. Later in the season, Autumn and Winter berries are a vital source of food for songbirds. Their young in April and May can forage safely for tiny insects amongst the leafmould beneath the hedge. And moths and butterflies are profuse when there is the variety for that particular food source. I have written, in previous Burtonian articles, about particular, quite rare caterpillars, seen in this area.

The farmer told me he had spotted two, tiny, goldfinch nests - miniature cups of woven grass and moss lined with soft feathers from last year. I certainly associate my walks on Ireby Road, all through the year with the charms of these gorgeous, colourful little birds, darting in loops along the hedgerow.

The tools, traditionally used to lay a hedge, were an axe and a billhook. My late father laid hedges in the Radnorshire style of mid Wales in the 1950s. I still have some of his ancient tools in my collection. Here in Burton the farmer in Ireby Road is using the North Lancashire style [*Editors note: we have checked, Unintended Naturalist's hedge is indeed just*





i.a. krigger
CARPETS • VINYLs • RE-FITTING

IAN AKRIGG
FRIENDLY & PROFESSIONAL ADVICE

☎ 07539626044  /I.Akrigg/

CALL FOR A FREE QUOTE & MEASURING SERVICE



**SERVICING & SALES OF
GARDEN MACHINERY & TRAILERS**

New **HAYTER/TORO** mower range
now in stock

Graham Fawcett Plant Ltd
Unit 3 Bentham Industrial Estate, Bentham LA2 7NB
015242 62888

beyond the County Boundary, into Lancashire]. The diagonal cuts that my late father called “pleaching”, near the base of the young tree, allowed the branches to be bent horizontally, whilst still attached to the main trunk. This can be seen here too but in North Lancashire, the horizontals are apparently called “liggers”.

Wooden stakes are placed regularly, on both sides of the laid branches to secure a stable hedge and they will eventually become part of the hedgerow.



The Radnorshire style differs, even from neighbouring Brecknockshire, as I learnt when cycling past a hedgelay-er many years ago, where the two ancient counties met. He showed me the difference: one style weaves young pliable hazel or willow twigs in and out at the very top of the hedge to keep it stable. I am sure there will be many more regional variations.

The variety of trees making the hedge is also deeply interesting. Hazel, oak, holly, blackthorn, hawthorn, beech, silver birch, elder and more will be found in an old hedge. They provide a rich source of food to support foraging insect, bird and other wildlife.

In Isabella Tree’s book, “Wilding”, she describes programmes, carefully practised for some years to encourage and restore disappearing species. To mention just one such example she gives: between 1967 and 2007, the number of nightingales in the UK fell by 91%. Their once familiar song was almost completely wiped out. By reintroducing suitable habitats, especially healthy and well-laid hedgerows, they can be heard again.

Between the Second World War and the 1990s, Britain saw huge changes in farming methods. They included the destruction, or loss of some 75,000 miles of hedgerows. But latterly, there has been much better understanding of the consequences of this loss. And it has encouraged the maintenance and restoration of hedgerows, as practised by our local farmer, on Ireby Road. It is so encouraging and I celebrate such careful guardianship of the countryside, around Burton.

The old ways, when practised in our hedges and woodlands, really have huge benefits making a healthy vibrant habitat for wildlife, as well as giving such great aesthetic pleasure.

Temptations
31 Main St, Bentham
015242 61868

**A treasure trove of fabulous fabrics!
Quilting & Dressmaking
Water Resistant & Breathable
Buckles, Webbing & Haberdashery
Plus Knitting & Crochet
Yarns & Patterns**

www.temptationsbentham.co.uk
www.pennineoutdoor.co.uk

New Rd, Ingleton, LA6 3PE - 01524242223

Country Harvest
Where the Dales meet the Lakes.
FOOD HALL CLOTHING
COFFEE SHOP GIFTS & CRAFTS

Coffee shop Farmshop Butchery Bakery Gift Hall Clothing Hall Outdoor Living Cabin

www.country-harvest.co.uk // Follow us on social media!

MORE THAN JUST A FARM SHOP

**PROFESSIONAL HOUSE
CLEARANCE SERVICE**

FULL AND PART CLEARANCES
UNDERTAKEN.

HOUSE, GARAGES AND ANY
OUTBUILDINGS AS REQUIRED.
REASONABLE RATES.

TRUSTWORTHY, EFFICIENT AND
ENVIRONMENTALLY AWARE.

JUSTIN MERRY 07976 357560



Wood4The Trees

Sam Watson

Bentham

015242 37728

07789 901329

Tree Care and Forestry. Felling,
Thinning, Reductions, Stump Grinding,
Pruning, Hedging and Hedge Laying.

THE BURTONIAN ADVERTISING RATES

£110 for half a page for a year (6 issues)

£55 for a quarter of a page for a year (6 issues)

£27.50 for an eighth of a page for a year (6 issues)

Other sizes by arrangement

Flyer inserts (pre-printed by advertiser) £27.50 for A4 sheet which is pre-folded to A5 size, or A5 single sheet.

Flyer to be printed by The Burtonian by arrangement only, cost to be agreed beforehand.

Rates include publication on the Burton in Lonsdale website and a direct link to your website if you supply the appropriate details.

£22 for a single issue

£11 for a single issue

£5.50 for a single issue

The Burtonian is published on the 1st February, April, June, August, October and December. Press date is the 18th of the previous month.

Copy should be submitted earlier to the editor to ensure that it can be printed to the best advantage. Copy can be altered in between issues.

All adverts can now be in colour.

Copy can be emailed to burton.news@gmail.com or left in Burton Shop for collection.

Please make cheques payable to 'Burton Communication Group' and send them to the treasurer indicating whether you require a receipt. Cheques and cash can also be left at Burton Village Shop if more convenient. Cheques are preferred due to banking restrictions.

Payments may be made by bank transfer to HSBC so long as your identity is clearly stated: Sort code 401008 account 51227645

Paul Adams

Treasurer – Burton Communication Group

11 Manor Close, Burton in Lonsdale, Carnforth, LA6 3NE

The Bentham Line

Mondays to Saturdays

| | | | | | | | | |
|------------|------|------|------|------|------|------|------|------|
| Bentham | 0601 | 0805 | 0935 | 1136 | 1337 | 1538 | 1849 | 2040 |
| Wennington | 0606 | 0810 | 0940 | 1142 | 1343 | 1543 | 1855 | 2046 |
| Lancaster | 0630 | 0846 | 1006 | 1211 | 1411 | 1611 | 1924 | 2117 |

Sundays

| | | | | | |
|------------|------|------|------|------|------|
| Bentham | 0956 | 1148 | 1425 | 1648 | 1847 |
| Wennington | 1001 | 1153 | 1450 | 1653 | 1852 |
| Lancaster | 1025 | 1220 | 1518 | 1721 | 1919 |

Mondays to Saturdays

| | | | | | | | | |
|------------|------|------|------|------|------|------|------|------|
| Lancaster | 0648 | 0941 | 1046 | 1248 | 1447 | 1745 | 2030 | 2131 |
| Wennington | 0712 | 1005 | 1110 | 1312 | 1511 | 1809 | 2054 | 2156 |
| Bentham | 0717 | 1011 | 1115 | 1315 | 1516 | 1815 | 2059 | 2102 |

Sundays

| | | | | | |
|------------|------|------|------|------|------|
| Lancaster | 1103 | 1344 | 1552 | 1752 | 2017 |
| Wennington | 1128 | 1408 | 1616 | 1816 | 2042 |
| Bentham | 1134 | 1413 | 1622 | 1821 | 2048 |

Bus Service

Service 583

Klch.co.uk

Mondays to Fridays

| | |
|----------------------------|--|
| To Bentham (from shopside) | To Kirkby Lonsdale, connect to Lancaster |
| 10.09 | 6.49 |
| 12.09 | 10.26 |
| 14.09 | 12.26 |
| 17.14 | 14.26 |

Saturdays

| | |
|------------|--|
| To Bentham | To Kirkby Lonsdale, connect to Lancaster |
| 10.09 | 7.59 |
| 12.09 | 10.26 |
| 14.09 | 12.26 |
| 16.09 | 14.26 |
| | 16.26 |

Gallaber Farm

Holiday Cottage and Caravan Park

Cottage with stunning views sleeps 4

A 5 and a 6 berth static caravan for holiday rental

15 touring pitches with hook up points

For further details please contact Jennifer Sedgwick on 015242 61361 or visit our website www.gallaberfarm.co.uk

Holiday Cottage High Street, Burton in Lonsdale

Warm cosy well equipped cottage appointed to a very good standard.

3 Bedroom, Sleeps 5. Sorry no pets.

Weekly and shorter breaks are welcome.

Discount for friends and relatives of locals.

For more details please contact Heather on 07540422531

E mail: watts.rae2@gmail.com

All Saints' Church News

Sunday Services in February and March 2024

| | | |
|----------|------------------|--|
| February | 4th | Candlemas 8 am (Holy Communion) 11 am Joint service with the Methodist congregation 6.30 pm BCP Evensong at St John's Bentham, |
| February | 11th | 11 am (Holy Communion) |
| February | 14 th | 7.30 pm Ash Wednesday Service at St Mary's Ingleton |
| February | 18th | 8 am (Holy Communion) 11 am (Morning Worship) All Saints Congregation joined by the Methodist Congregation |
| February | 25 th | 11 am (Holy Communion) |
| March | 3 rd | 8 am (Holy Communion) 11 am Joint service with the Methodist congregation |
| March | 10 th | 11.00 am (Holy Communion) |
| March | 17th | 8 am (Holy Communion) 11 am (Morning Worship)) All Saints Congregation joined by the Methodist Congregation |
| March | 24 th | 11 am (Holy Communion) |
| March | 28 th | 7.30 pm Maundy Thursday St Oswald's Thornton in Lonsdale |
| March | 29 th | 10.10 am Good Friday service with the cross |
| March | 31 st | 11 am Easter Day Holy Communion |

Other Services and Events in February and March

Pancakes 13th February in Burton Village Hall; 4 to 5.30 pm. Voluntary donations to the Children's Society- please enjoy the pancakes and give generously to charity.

Ash Wednesday (14th February) Holy Communion Ingleborough Team Service 7.30 pm. St Mary's Ingleton

Stay and Play our group for pre-school children (with parent or guardian) meets on Thursdays in the Church Room from 9.30 am until about 11.30. We will be visited by the Bishop of Ripon on 1 February. The group will break up for Easter after the meeting on 28th March. New families are always very welcome. There are toys and other things to entertain the children and tea, coffee and chat for the adults. For further information e-mail all-saintscw@gmail.com.

Each Friday morning we normally meet at 10 am in the Church Vestry for a short simple time of **Prayers for the Parish**. Do feel free to join us for about 30 minutes.

Still Point Cathy intends to run Still Point meetings on the following Friday evenings:

Feb 9 & 23, March 8 & 22

Best wishes

Catherine Church Warden at All Saints

And from our Church Worship Leader Cathy Rowland
Pilgrim musings....

For many of us going into a new year can be about looking at our comfortable (or uncomfortable!) life patterns in a fresh way and deciding what to hold on to or what, perhaps to try to change...

I came across the following piece of writing in December. It takes a fresh look at some very familiar words and is written by a Spanish monk called Olaizola. It moves me every time I read it...so I thought I would pass it on. I wish to take the thoughts it contains with me into 2024...

"My son...my daughter...my child...who is on the earth..

in all you do may your life be the best reflection of My name.

*Commit yourself to My kingdom with every step that you take,
with every decision that you make, with every attitude and gesture.*

Build it for Me and with Me. This is My will on the earth as it is in heaven.

Receive your daily bread with the awareness that this is a privilege and a miracle.

I give you My forgiveness for your errors, your failures, your moments of abandoning Me.

But do the same thing with the fragility of your brothers and sisters.

Strive for more justice and peace and I will be at your side.

Evil will not have the last word."

May there perhaps be something in these beautiful words that helps you face 2024 with renewed hope, energy and vision for your life, for our community here in Burton and for our precious world.

A very happy, fulfilling and meaningful New Year to you all!



BUMBLEBEE GALLERY
ART, HOME & GIFT

• www.bumblebeegallery.co.uk • 015242 98220 •

**ART GALLERY,
HOME ACCESSORIES
& GIFT SHOP**

**Bumblebee Gallery,
Kirkby Lonsdale,**
is a family run, independent Art, Home and Gift Shop. We are filled with a diverse and ever developing range of beautifully designed pieces, created by over 70 accomplished British artists and artisans. This includes local artists from right here in Burton in Lonsdale, as well as many from; Cumbria, Yorkshire, and Lancashire.

• 10 Market Street, Kirkby Lonsdale, LA6 2AU •



DMS CARE LTD

About Us

At DMS CARE our primary concerns are your wellbeing and that of those close to you. We aim to be the number one supplier of holistic domiciliary care and suppliers of medical equipment in Bentham, Burton, Ingleton and surrounding areas.

At DMS CARE we understand how difficult things can be and that's why we tailor our service to your requirements. We care, not just for our clients, but for those around them and they will be updated as much as you allow so that your family and friends are up to date with your condition. We understand how stressful not knowing can be.

07856 392 209
Email David Senior at
dmscareltd@gmail.com

News from the Shop!

We hope you've been enjoying the Shop's new doors, with easier access, more light inside and the smart exterior, all in action for a few weeks now.

Now, we have the new shelving and store in place and in action, so we're looking forward to completing the finishes, decoration, lighting and new stock displays., as well as the new counter and back-shelving.

And there's going to be a new comfortable and welcoming space in the bay window, for a quiet cup of coffee, maybe to read the paper or to catch up with a friend or two...

Watch this space!

And we hope you've found the new taster range of wines from wholesaler EWGA.

We're being looked after by Dan, a great grandson of Plato Harrison, the legendary wine merchant of Kirkby Lonsdale. He's certainly got wine in his genes!!

We're aiming to enlarge and enhance the range of wines, beers and spirits on the additional space for alcohol sales in its new location.

Watch this space as well

And we've been very pleased to welcome our new Post Office Assistant Hannah Grundy. Hannah is working on Monday and Tuesday Mornings, so our usual PO service (**Open 9am to 1pm, Mondays to Fridays**) has happily resumed. .

If you have thoughts or comments about the Shop or want to be involved, please do let us know.

We need more people to be engaged in this great Community asset,

Please come along and let us know if you are interested in:

the Committee, book-keeping, serving behind the counter or whatever you can offer.

J. LAWSON

ELECTRICAL CONTRACTOR

14 MANOR CLOSE

07786 222566

BURTON IN LONSDALE

015242 62916

LA6 3NE

jlawsonelectrical@gmail.com